



COMMUNITY PRICE LIST

Created: Mar-21-2016

Diamond Court Village

Floorplans

Floorplan	Bed	Bath	Den	Garage	Sq.Ft.	Priced From
Avalon 55	3	3	No	2 Bay	2,406	TBD
Bennington	3	2.5	Yes	2+ Bay	2,975	TBD
Carmel Grande 12	3	2	Yes	2 Bay	2,416	TBD
Laguna	3	3	Yes	2+ Bay	2,711	TBD
Monaco Supreme	3	3	Yes	3 Bay	2,584	TBD

Base price includes a choice of the GHO Homes owned lots in Diamond Court Village and the GHO Homes features list. Other lots may be available but at an additional cost.



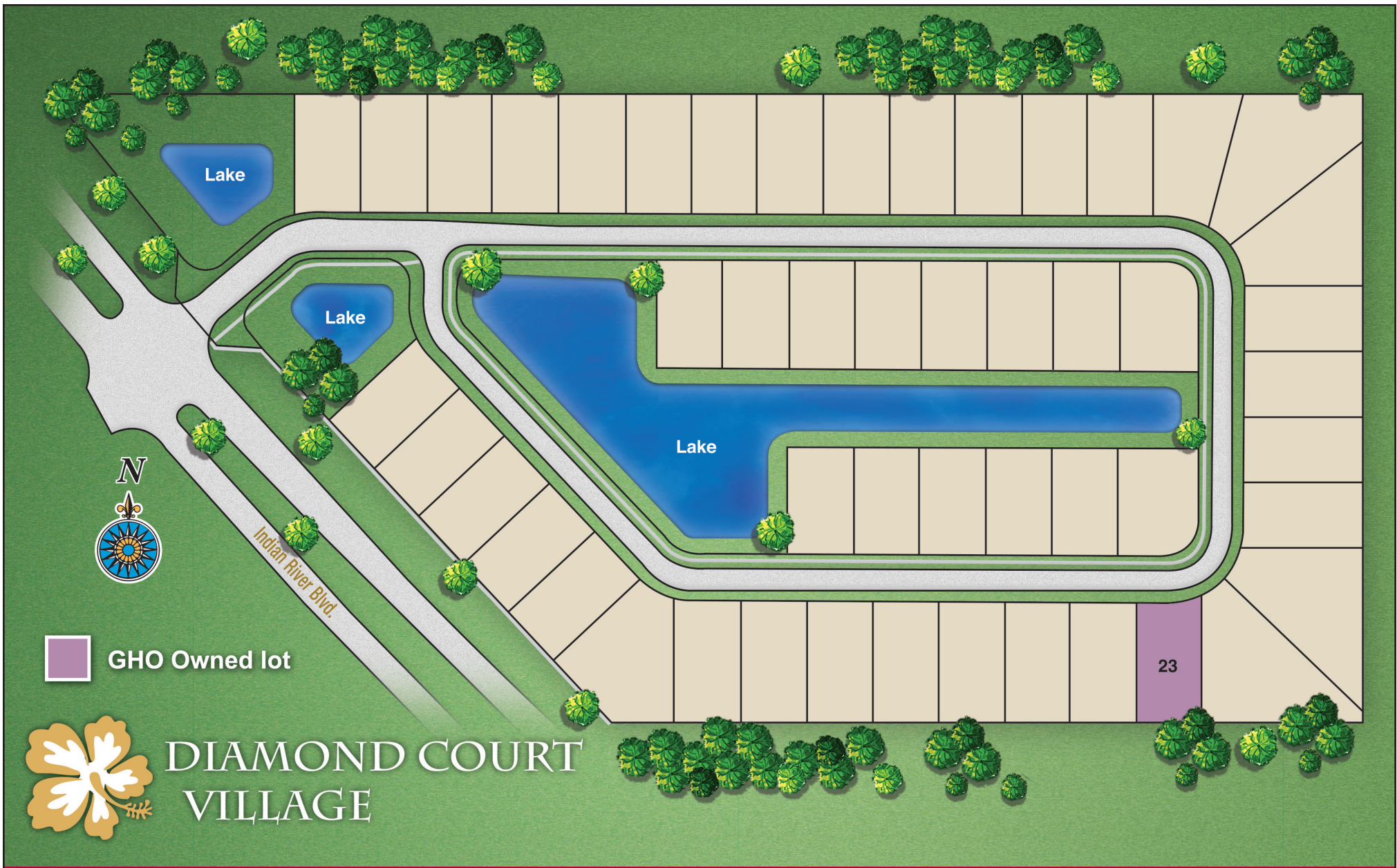
To Learn More About These Homes Please Contact

Patti Croswell 772.257.1100 Cell: 561 568 4848 pattic@ghohomes.com

GHO HOMES 772.257.1100 | ghohomes.com



Seller reserves the right to make changes or modifications to plans, maps, plan specifications, materials, features, and colors without notice. Prices are subject to change without notice. Maps, plans, landscaping and elevation renderings are artist's conceptions, are not to scale, and may not accurately depict the homes or lots as they are built. This brochure is for illustrative purposes only and not a part of a legal contract. Picture and floor plan shown above is likely not the actual home being offered, but a similar home/model.

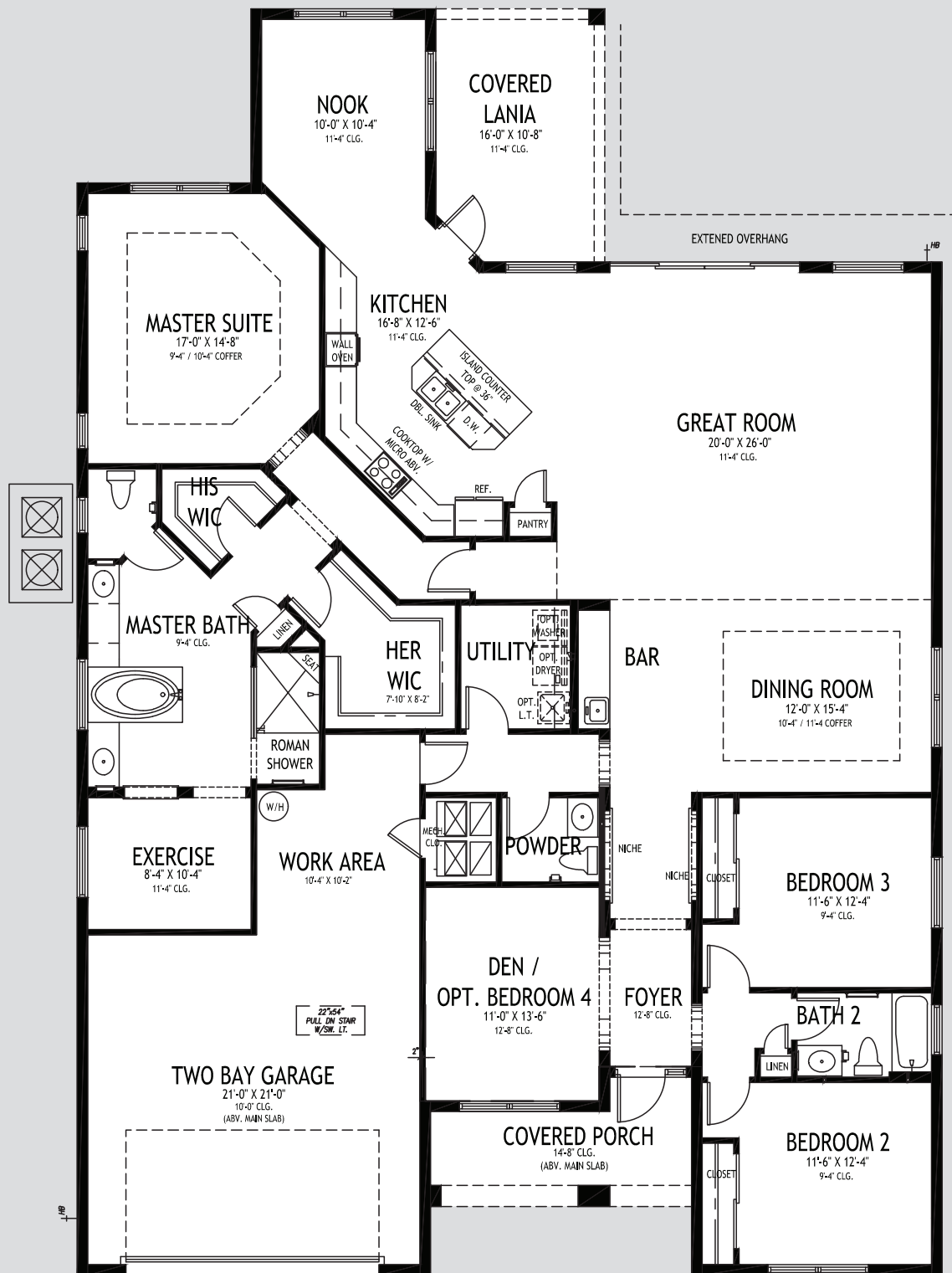


DIAMOND COURT
VILLAGE

GHO HOMES

772.257.1100 | www.ghohomes.com

All dimensions, features, specifications and square footages are approximate and subject to change without notice. Maps, plans, landscaping and elevation renderings are artist's conceptions, are not to scale, and may not accurately depict the homes or lots as they are built. Revised January 12, 2015.



54' 8" W X 80' D

Bennington

GHO HOMES

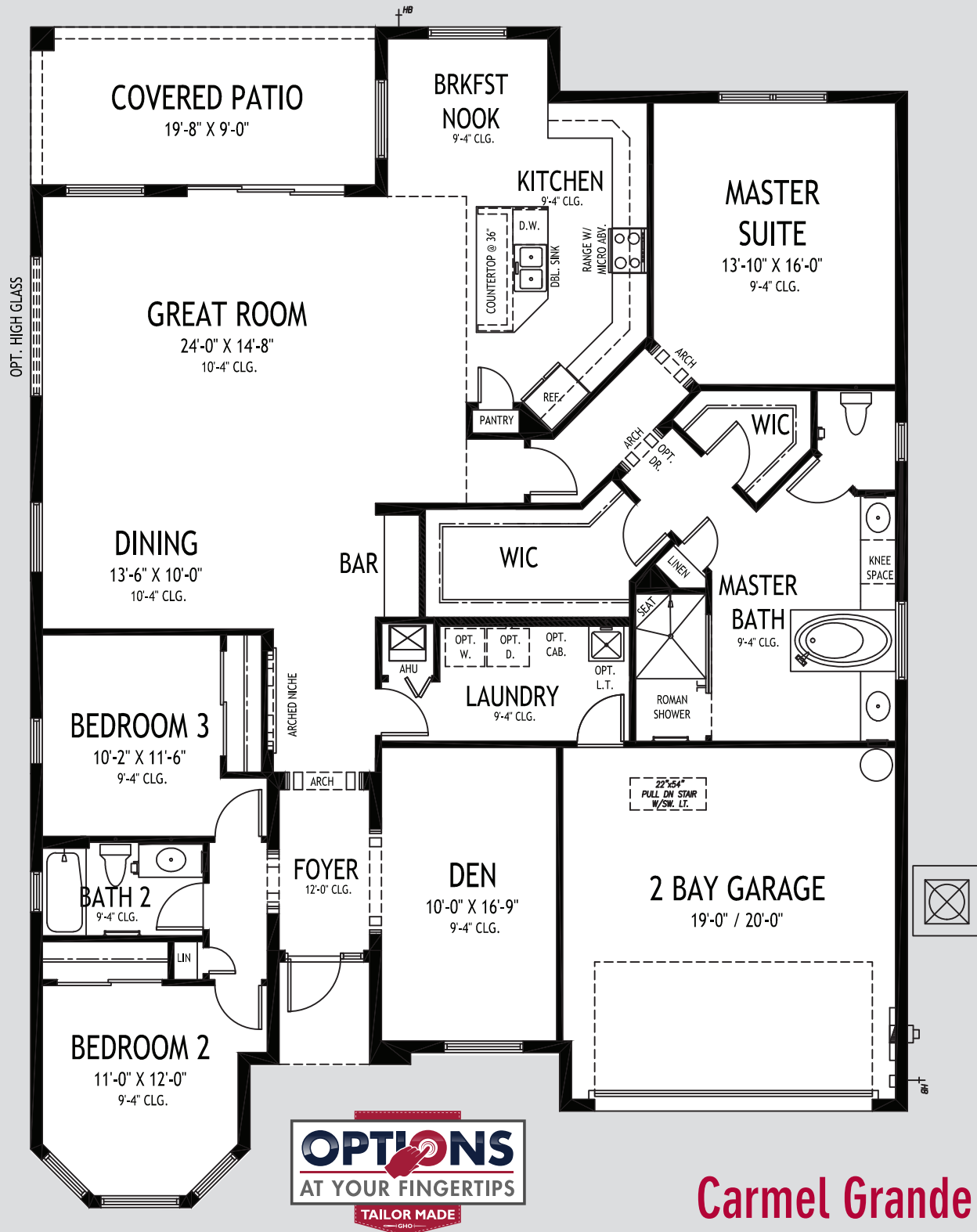
772.257.1100 | www.ghohomes.com

APPROXIMATE AREAS

Air Conditioned 2,975 Sq. Ft.
 Covered Entry 110 Sq. Ft.
 Covered Patio 166 Sq. Ft.
 2 Bay Garage 589 Sq. Ft.
TOTAL 3,840 Sq. Ft.



All Dimensions, Features, Specifications and Square Footages are approximate and subject to change without notice. Maps, plans, landscaping and elevation renderings are artist's conceptions, are not to scale, and may not accurately depict the homes or lots as they are built.



Carmel Grande 12

50' W x 67'-4" D

Visit the Interactive Floorplan on our website to preview options and make our house your dream home.

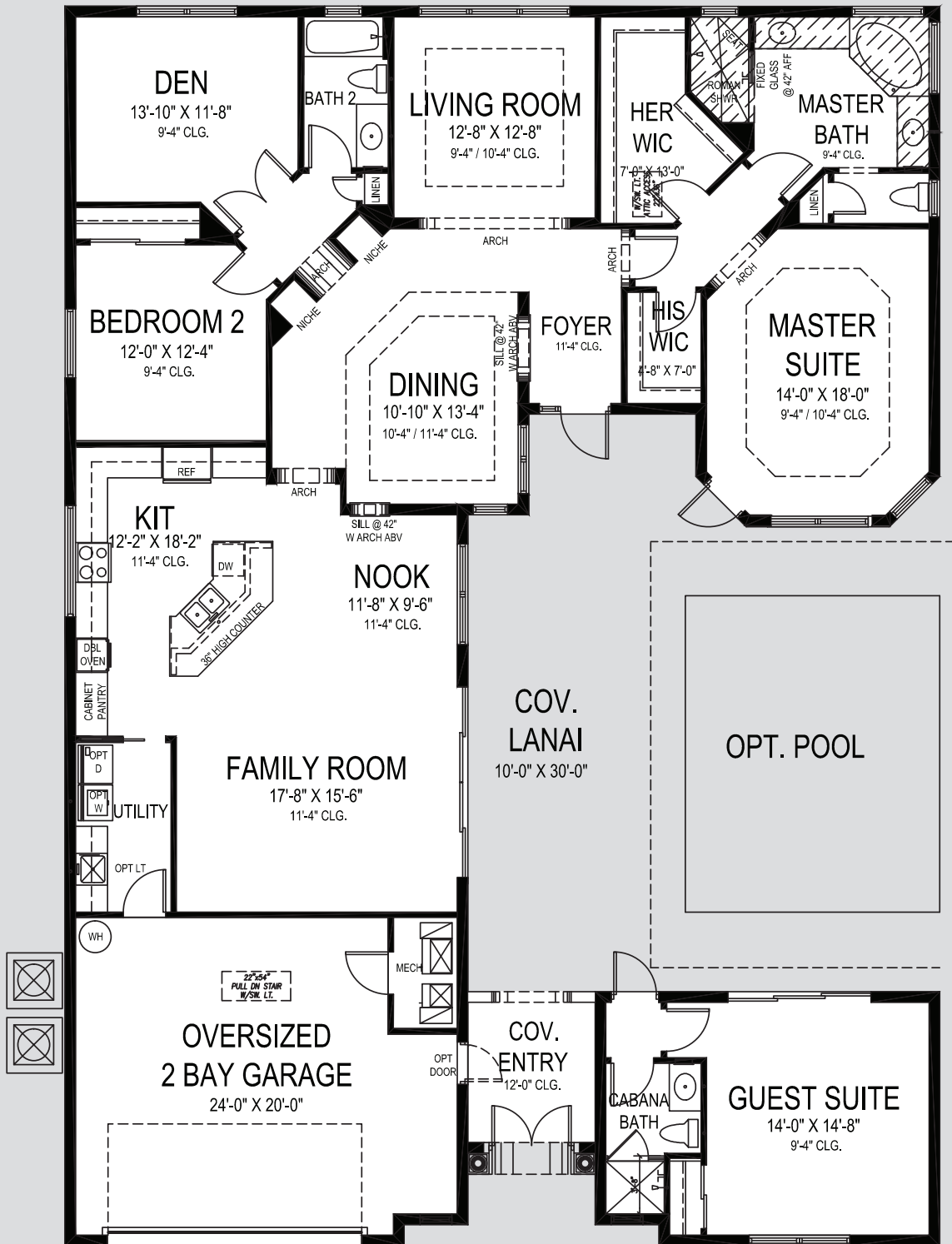
GHO HOMES

772.257.1100 | www.ghohomes.com

APPROXIMATE AREAS	
Air Conditioned	2,408 Sq. Ft.
Covered Entry	30 Sq. Ft.
Covered Patio	177 Sq. Ft.
2 Bay Garage	409 Sq. Ft.
TOTAL	3,024 Sq. Ft.



All dimensions, features, specifications and square footages are approximate and subject to change without notice. Maps, plans, landscaping and elevation renderings are artist's conceptions, are not to scale, and may not accurately depict the homes or lots as they are built.



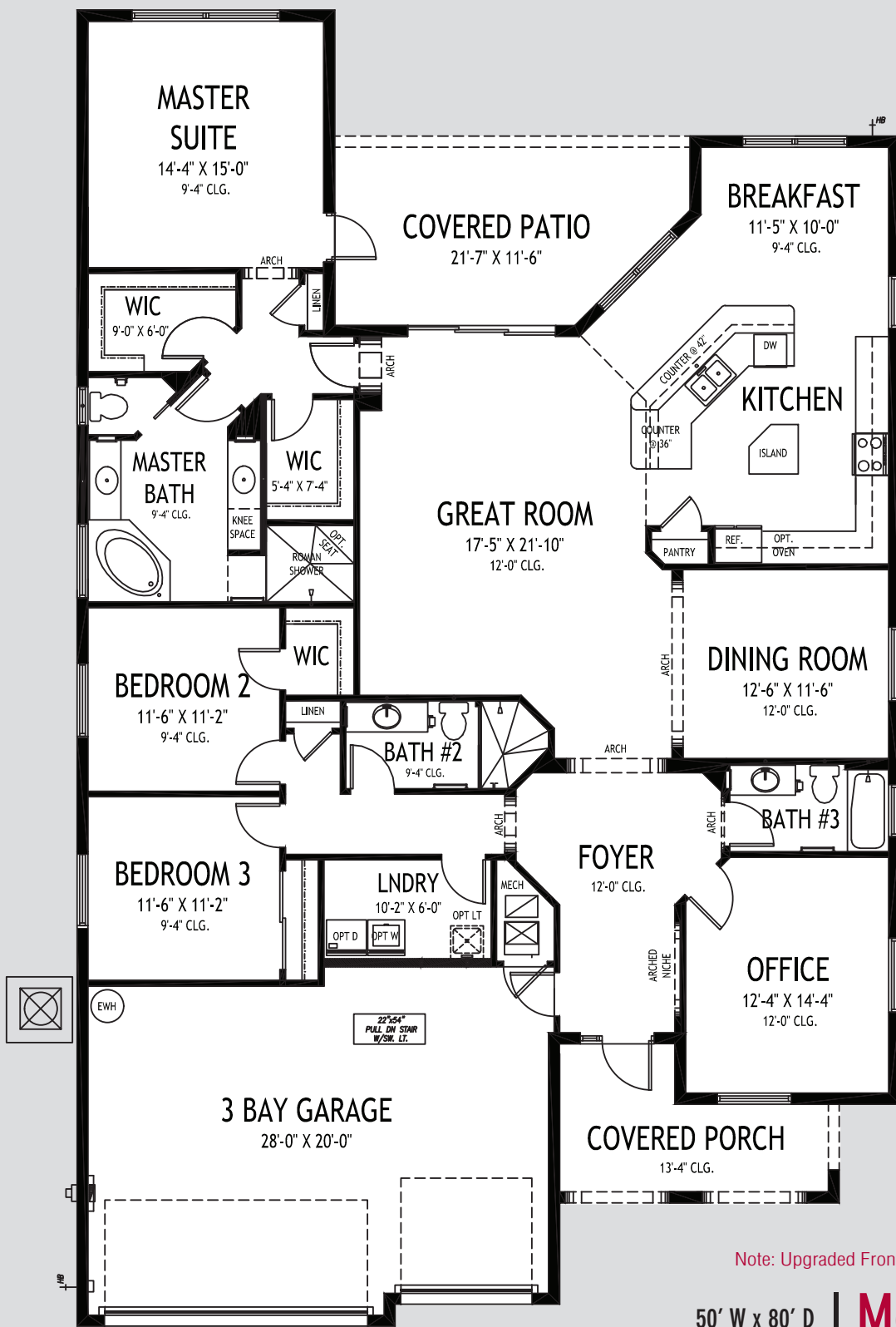
55' W X 78' D | **Laguna**

GHO HOMES
772.257.1100 | www.ghohomes.com

APPROXIMATE AREAS	
Air Conditioned	2,711 Sq. Ft.
Covered Entry	93 Sq. Ft.
Covered Patio	423 Sq. Ft.
2 Bay Garage	484 Sq. Ft.
TOTAL	3,711 Sq. Ft.



All Dimensions, Features, Specifications and Square Footages are approximate and subject to change without notice. Maps, plans, landscaping and elevation renderings are artist's conceptions, are not to scale, and may not accurately depict the homes or lots as they are built.



Visit the Interactive Floorplan on our website to preview options and make our house your dream home.

Note: Upgraded Front Elevation Shown - Not Standard

50' W x 80' D | **Monaco Supreme**

GHO HOMES

772.257.1100 | ghohomes.com

APPROXIMATE AREAS	
Air Conditioned	2,586 Sq. Ft.
Covered Entry	128 Sq. Ft.
Covered Patio	224 Sq. Ft.
3 Bay Garage	608 Sq. Ft.
TOTAL	3,546 Sq. Ft.



All dimensions, features, specifications and square footages are approximate and subject to change without notice. Maps, plans, landscaping and elevation renderings are artist's conceptions, are not to scale, and may not accurately depict the homes or lots as they are built.



COMMUNITY FEATURES LIST

Diamond Court Village

Created: Mar-21-2016

Construction Features

- Structural Design Per Florida Current Building Codes and Design Standards
- ☑ Plywood 5/8" (19/32) Roof Sheathing (no particle board)
- Concrete Slab on Grade with Steel Reinforcement and Fibermesh Concrete
- Sentricon Termite Treatment and Control System - 1 year service included
- Concrete Block Construction with Concrete and Steel Reinforcement
- Professionally Engineered Roof Trusses with Hurricane Straps
- Concrete Based Textured Exterior Wall Finish
- Underground County/City Electrical, Water and Sewer Connections
- ☑ Underground Natural Gas Service Supply, Standard
- ☑ Taexx Built In Pest Control Delivery System Installed

Exterior Features

- Concrete Tile Roof System, Choice of Flat or Roll Style and Select Colors
- Sherwin Williams Loxon Acrylic Exterior Paint on Exterior Walls of Home
- ☑ Impact Glass - All Windows, Sliders and Glass Doors - all openings
- Wind Rated Garage Doors with Remote-Controlled Openers (2 remotes)
- Paver Driveway, Front Walks and Rear Covered Patio Floor
- Exterior Garden Hose Connections (2)
- Exterior GFI Electric Outlets (2)
- ☑ Fiberglass Textured Raised-Panel 8' Front Doors with Clear Impact Glass Single Lite Sidelites - per plan
- Professionally Designed Landscaped Package and Floratam Sod

Utility Room and Garage

- ☑ Drop Down Stairs to Attic Area
- Lighting Provided for Garage and Utility Room

Gourmet Kitchens

- ☑ Kitchen Craft Columbia (GHO Level 3 Selections) Kitchen Cabinet Series w/ Wood Dove Tail Drawers & Soft-close Drawers
- ☑ Kitchen Cabinets feature Crown Molding, Glass Doors, Light Valance and Upgraded Layout - per plan
- ☑ Granite or Quartz Kitchen Counter Top, with 4 inch back splash, layout per plan (GHO Level 1 Selections)

GHO HOMES 772.257.1100 | ghohomes.com



Seller reserves the right to make changes or modifications to plans, maps, plan specifications, materials, features, and colors without notice. Prices are subject to change without notice. Maps, plans, landscaping and elevation renderings are artist's conceptions, are not to scale, and may not accurately depict the homes or lots as they are built. This brochure is for illustrative purposes only and not a part of a legal contract. Picture and floor plan shown above is likely not the actual home being offered, but a similar home/model.



COMMUNITY FEATURES LIST



Diamond Court Village

Created: Mar-21-2016

- ☑ **Kitchen Faucet: Moen Arbor Pull Out Spray - Stainless Steel Finish**
 - **Stainless Steel Undermount Kitchen Sink 70/30 Split**
- ☑ **GE Refrigerator: 27 cft French Door SS Style Profile Series - EStar**
- ☑ **GE Wall Oven: Profile Series Electric Double Oven, Convection Upper**
- ☑ **GE Cook Top: Profile Gas 30" 5 Burner Cook Top**
- ☑ **GE Dishwasher: Profile Series/ Multi-Cycle, Steam - Energy Star Rated**
- ☑ **GE Microwave: Profile Series Installed Over Range**
 - Flooring: Ceramic Tile in Kitchen and Breakfast Rooms per plan
 - **Walk-in Pantry with Vinyl Clad Ventilated Shelving - per plan**
 - Recessed HiHat Lighting - per plan

Luxury Bathrooms

- ☑ **Granite or Quartz Bath Vanity Top with White Under-Mount Sink - all baths**
 - ☑ **Oversized Walk-In Roman Showers - per plan**
 - ☑ **Built in Shower Seat in Master Shower, Ceramic Tile Finish - per plan**
 - Moen Pressure Balance Control Valves for all Showers
 - **Clear Glass Shower Enclosures or Glass Panels - per plan**
 - ☑ **Wood Raised Panel Vanity Doors, Raised Height Vanities -**
 - Cultured Marble Roman Tub with Deck Mounted Valve - per plan
 - Sterling Vikrell® Tub/Shower Combo in Secondary Bathroom(s)
 - ☑ **Ceramic Tile Bathroom Floors with Walls and Shower Floors - Choice of Deco Wall Tile Packages with Listello**
- Features all Baths (GHO Level 1 Selections)**
- ☑ **Moen Brushed Nickle Bathroom Faucets and Fixtures**
 - Elongated White Toilets in all Bathrooms
 - **Full Width Oversized Height Vanity Mirrors**
 - Clear Glass Windows in all Bath with Frosted Windows Option

Interior Appointments

- ☑ **Colonist Raised Panel 8 Ft Interior Doors**
- ☑ **Crown Molding in Foyer, Great Room/Family Room, Kitchen, Living Room, Dining Room and Master Bedroom - perimeter of room only/ layout per plan**
- ☑ **Built-In Bar Base Cabinets with Granite or Quartz Counter Top, on select plans (Match Kitchen - per plan)**
 - Marble Window Sills Throughout Living Area
- ☑ **Designer Two Tone Interior Paint Upgrade - Choice of Select Colors (select one) and White for Trim and Ceiling**

GHO HOMES 772.257.1100 | ghohomes.com



Seller reserves the right to make changes or modifications to plans, maps, plan specifications, materials, features, and colors without notice. Prices are subject to change without notice. Maps, plans, landscaping and elevation renderings are artist's conceptions, are not to scale, and may not accurately depict the homes or lots as they are built. This brochure is for illustrative purposes only and not a part of a legal contract. Picture and floor plan shown above is likely not the actual home being offered, but a similar home/model.



COMMUNITY FEATURES LIST

Diamond Court Village

Created: Mar-21-2016

Ceramic Tile Flooring in Foyer, Kitchen, Halls, Great Room or Family Room & Living Room, Dining Room and Utility Room - layouts per plan (GHO Level 1 Selections)

- Designer Flooring Collection - Choice of Select Oversized Ceramic Floor Tile
- Wall-to-Wall Carpet in Choice of Designer Colors in all Bedrooms and Den (GHO Level 1 Selections)

Interior Design Features

- **Flex Plan Design -- offering many possible options for your lifestyle**
- Rounded Interior Wall Corners, Excluding Windows, Doors, Sliding Glass Doors, and Closets - per plan**
- **Flat Volume Ceilings - Minimum over 9feet High (per plan)**
- Designer Knockdown Texture on Ceilings
- Vinyl Clad Shelving in all Closets - per plan
- Air-Conditioned Walk-In Closets - per plan
- **Designer Arches, Niches and Pot Shelves - per plan**

Electrical Specifications

- **Recessed HiHat Lighting in Kitchen, Halls, Covered Entry and Patio**
- **Ceiling Fan Pre-Wire in all Bedrooms, Den and Great Rooms and Patio**
- **Walk-In Closet Lighting - per plan**
- Decorative Rocker Type Switches
- **Pre-Wired for (3) Phone Outlets in Home**
- **Pre-Wired for (3) Cable Television Outlets**

Energy Efficient & Safety Features

- High Efficiency Air Conditioning System - Rheem 16 SEER / Straight Cool / Sized Per Home**
- HVAC AC Filter Access Located at AC Unit or in Adjacent Side-Wall for Easy Access - per plan**
- NEST Next Generation Learning Thermostat**
- Energy Efficient R4.1 Concrete Block Wall Insulation
- Energy Efficient R11 Garage to House Wall Insulation
- **Energy Efficient R-30 Attic Insulation over Conditioned Space**
- Natural Gas Supply for Water Heater, Cook Top and Clothes Dryer**
- ARC Fault Electrical Outlets Per Code
- Smoke and Carbon Monoxide Detectors per code

GHO HOMES 772.257.1100 | ghohomes.com



Seller reserves the right to make changes or modifications to plans, maps, plan specifications, materials, features, and colors without notice. Prices are subject to change without notice. Maps, plans, landscaping and elevation renderings are artist's conceptions, are not to scale, and may not accurately depict the homes or lots as they are built. This brochure is for illustrative purposes only and not a part of a legal contract. Picture and floor plan shown above is likely not the actual home being offered, but a similar home/model.



COMMUNITY FEATURES LIST

Diamond Court Village

Created: Mar-21-2016



GHO Homes sets a higher standard in appointing our homes. The features that set us apart from other builders are our Ultimate Features - denoted by the check mark icon - which come standard in each of our homes.

Additional Tailor Made home design options to choose from include built-in entertainment centers, wet bars, screened-in pools and luxurious finishes and upgrades. From flooring to cabinetry and custom room designs, we've made it easy and affordable to realize your dreams.

GHO HOMES 772.257.1100 | ghohomes.com



Seller reserves the right to make changes or modifications to plans, maps, plan specifications, materials, features, and colors without notice. Prices are subject to change without notice. Maps, plans, landscaping and elevation renderings are artist's conceptions, are not to scale, and may not accurately depict the homes or lots as they are built. This brochure is for illustrative purposes only and not a part of a legal contract. Picture and floor plan shown above is likely not the actual home being offered, but a similar home/model.