



COMMUNITY PRICE LIST

Created: Nov-02-2016

Fieldstone Ranch

Floorplans

Floorplan	Bed	Bath	Den	Garage	Sq.Ft.	Priced From
Bridgeport	3	2	Yes	2 Bay	2,306	TBD
Carmel 12	3	2	No	3 Bay	2,223	TBD
Carmel Grande 12	3	2	Yes	2 Bay	2,416	TBD
Glendale	2	2	Yes	2+ Bay	1,854	TBD
Glendale Grande	3	2	Yes	2+ Bay	2,149	TBD
Monaco Supreme	3	3	Yes	3 Bay	2,584	TBD
Waterton 3	2	2	Yes	3 Bay	1,634	TBD

All prices above included a standard home site in Fieldstone Ranch, Phase 1. Phase 2 and 3 Lot Premiums are available with many amazing lake front home site available.

All homes include GHO's Ultimate Features Package for Fieldstone Ranch - Package may vary.

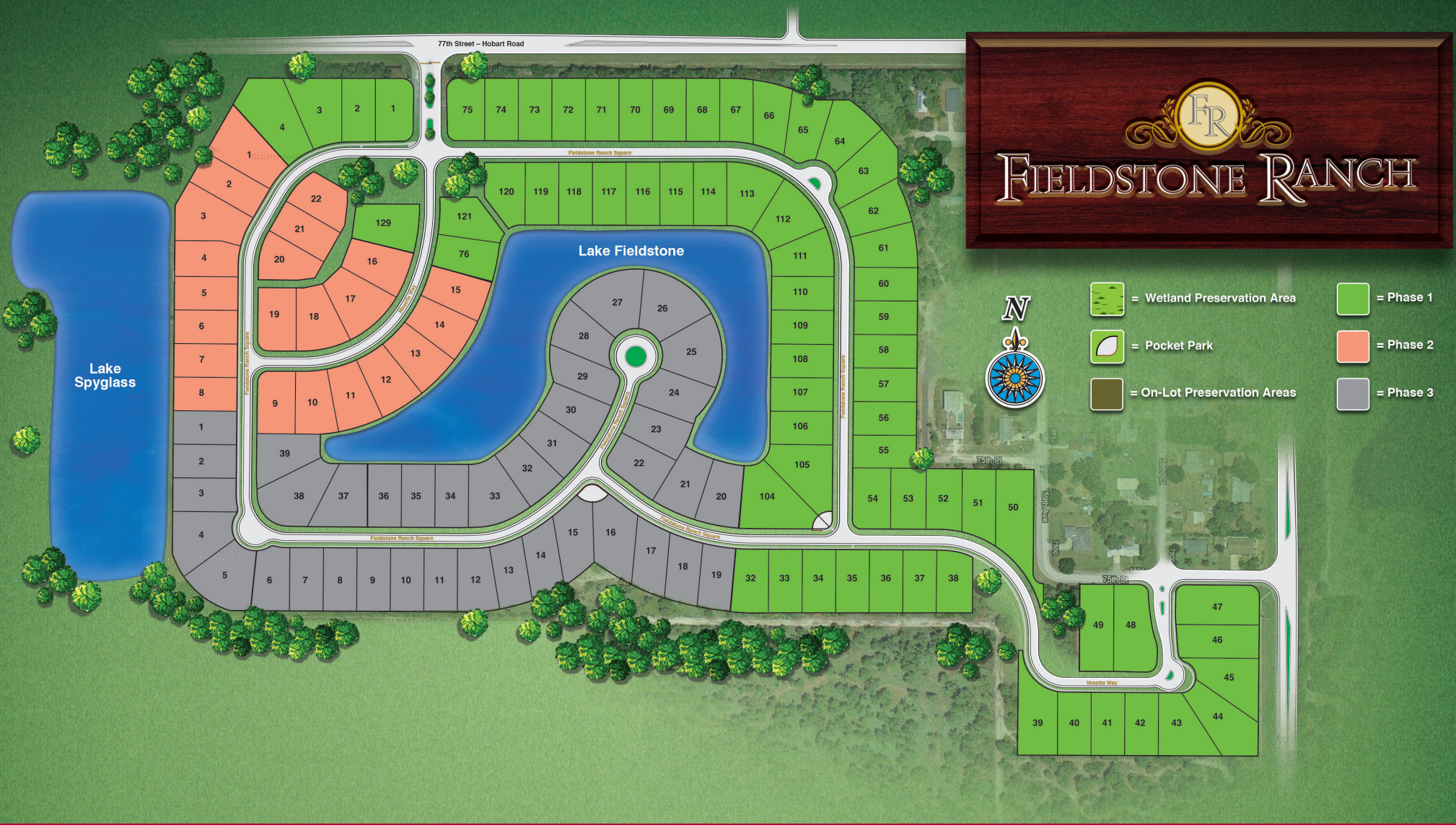
To Learn More About These Homes Please Contact

Sheryl Thomson 772.257.1100 Cell: 561.385.2292 sherylt@ghohomes.com

GHO HOMES 772.257.1100 | ghohomes.com



Seller reserves the right to make changes or modifications to plans, maps, plan specifications, materials, features, and colors without notice. Prices are subject to change without notice. Maps, plans, landscaping and elevation renderings are artist's conceptions, are not to scale, and may not accurately depict the homes or lots as they are built. This brochure is for illustrative purposes only and not a part of a legal contract. Picture and floor plan shown above is likely not the actual home being offered, but a similar home/model.





Bridgeport

50' W x 76' D

Visit the Interactive Floorplan on our website to preview options and make our house your dream home.

GHO HOMES

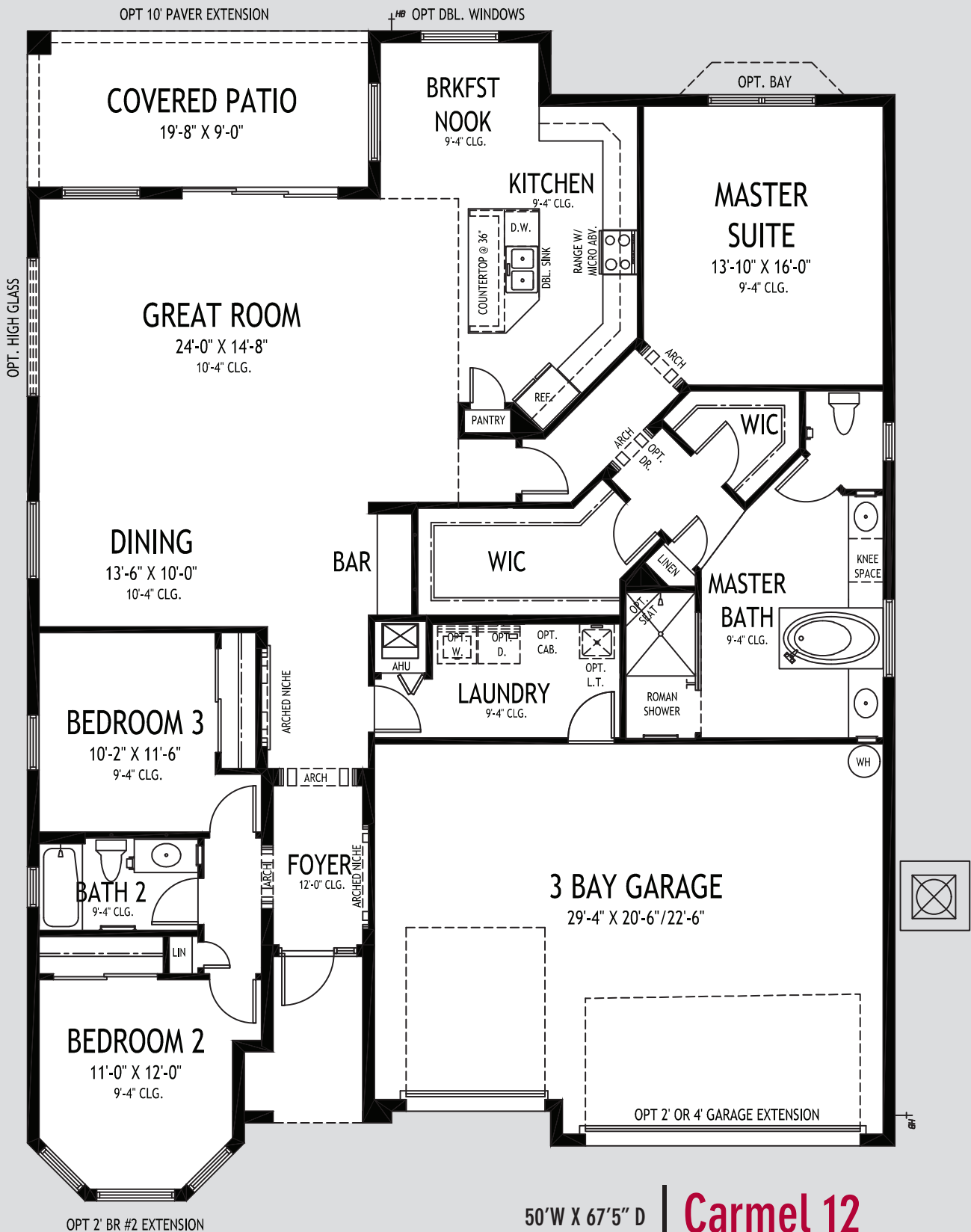
772.257.1100 | ghohomes.com

APPROXIMATE AREAS

Air Conditioned 2,306 Sq. Ft.
 Covered Entry 183 Sq. Ft.
 Covered Patio 206 Sq. Ft.
 2 Bay Garage 484 Sq. Ft.
TOTAL 3,179 Sq. Ft.



All dimensions, features, specifications and square footages are approximate and subject to change without notice. Maps, plans, landscaping and elevation renderings are artist's conceptions, are not to scale, and may not accurately depict the homes or lots as they are built.



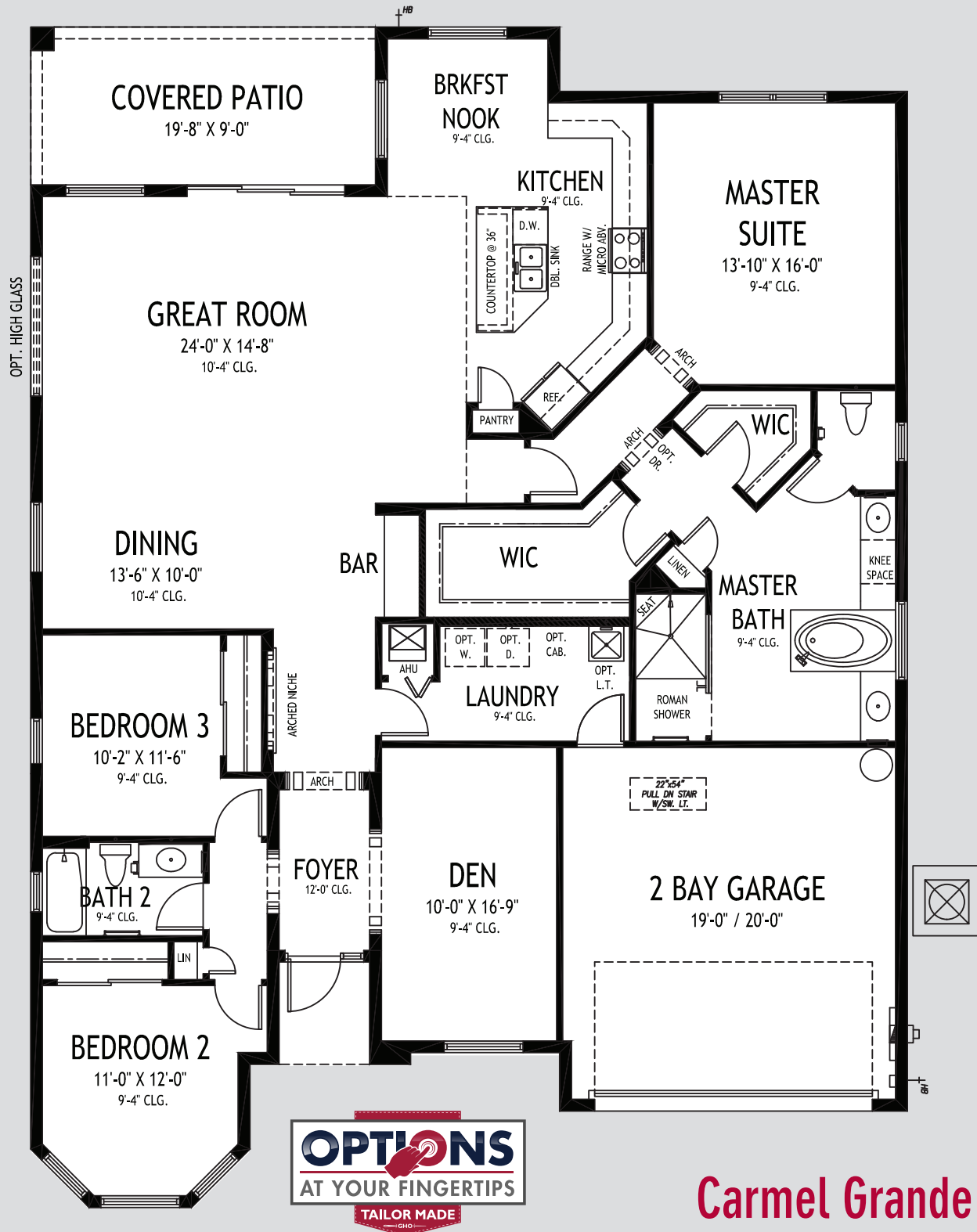
50'W X 67'5" D | **Carmel 12**

GHO HOMES
 772.257.1100 | www.ghohomes.com

APPROXIMATE AREAS	
Air Conditioned	2,223 Sq. Ft.
Covered Entry	56 Sq. Ft.
Covered Patio	177 Sq. Ft.
3 Bay Garage	682 Sq. Ft.
TOTAL	3,138 Sq. Ft.



All Dimensions, Features, Specifications and Square Footages are approximate and subject to change without notice. Maps, plans, landscaping and elevation renderings are artist's conceptions, are not to scale, and may not accurately depict the homes or lots as they are built.



Carmel Grande 12

50' W x 67'-4" D

Visit the Interactive Floorplan on our website to preview options and make our house your dream home.

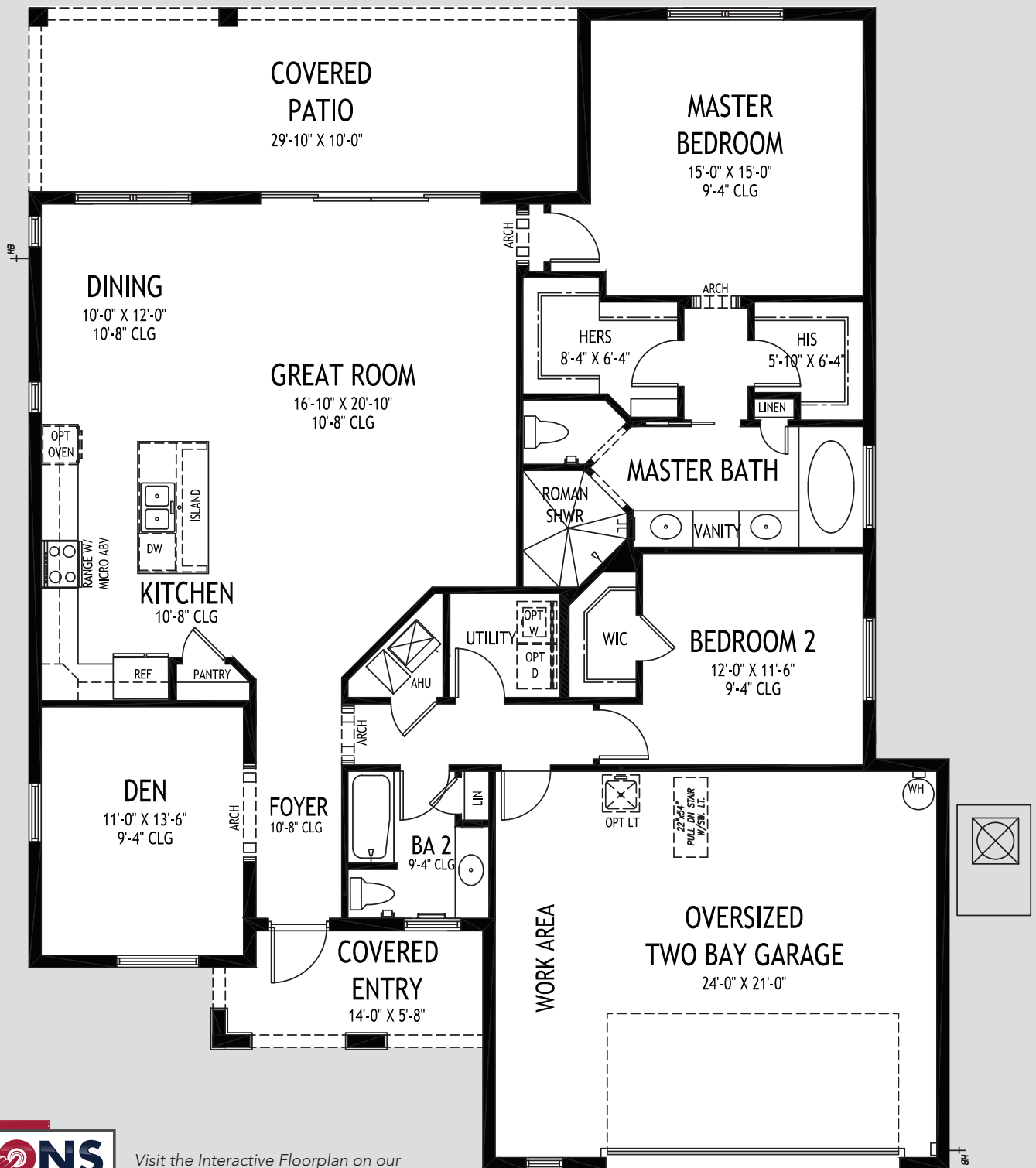
GHO HOMES

772.257.1100 | www.ghohomes.com

APPROXIMATE AREAS	
Air Conditioned	2,408 Sq. Ft.
Covered Entry	30 Sq. Ft.
Covered Patio	177 Sq. Ft.
2 Bay Garage	409 Sq. Ft.
TOTAL	3,024 Sq. Ft.



All dimensions, features, specifications and square footages are approximate and subject to change without notice. Maps, plans, landscaping and elevation renderings are artist's conceptions, are not to scale, and may not accurately depict the homes or lots as they are built.



Visit the Interactive Floorplan on our website to preview options and make our house your dream home.

50' W x 63' D | **Glendale**

GHO HOMES

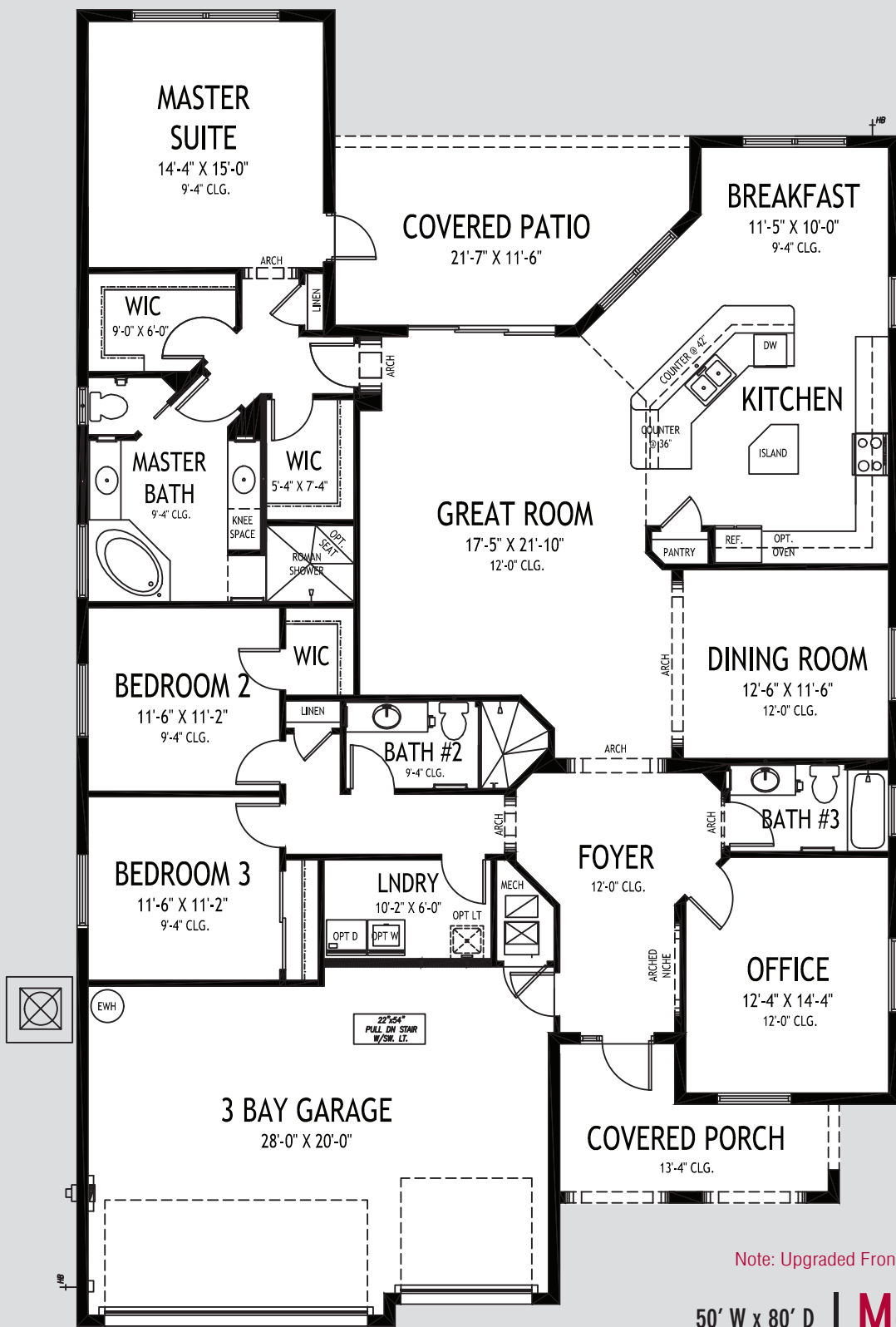
772.257.1100 | ghohomes.com

APPROXIMATE AREAS

Air Conditioned1,854 Sq. Ft.
Covered Entry88 Sq. Ft.
Covered Patio297 Sq. Ft.
2 Bay Garage546 Sq. Ft.
TOTAL2,785 Sq. Ft.



All dimensions, features, specifications and square footages are approximate and subject to change without notice. Maps, plans, landscaping and elevation renderings are artist's conceptions, are not to scale, and may not accurately depict the homes or lots as they are built.



Visit the Interactive Floorplan on our website to preview options and make our house your dream home.

Note: Upgraded Front Elevation Shown - Not Standard

50' W x 80' D | **Monaco Supreme**

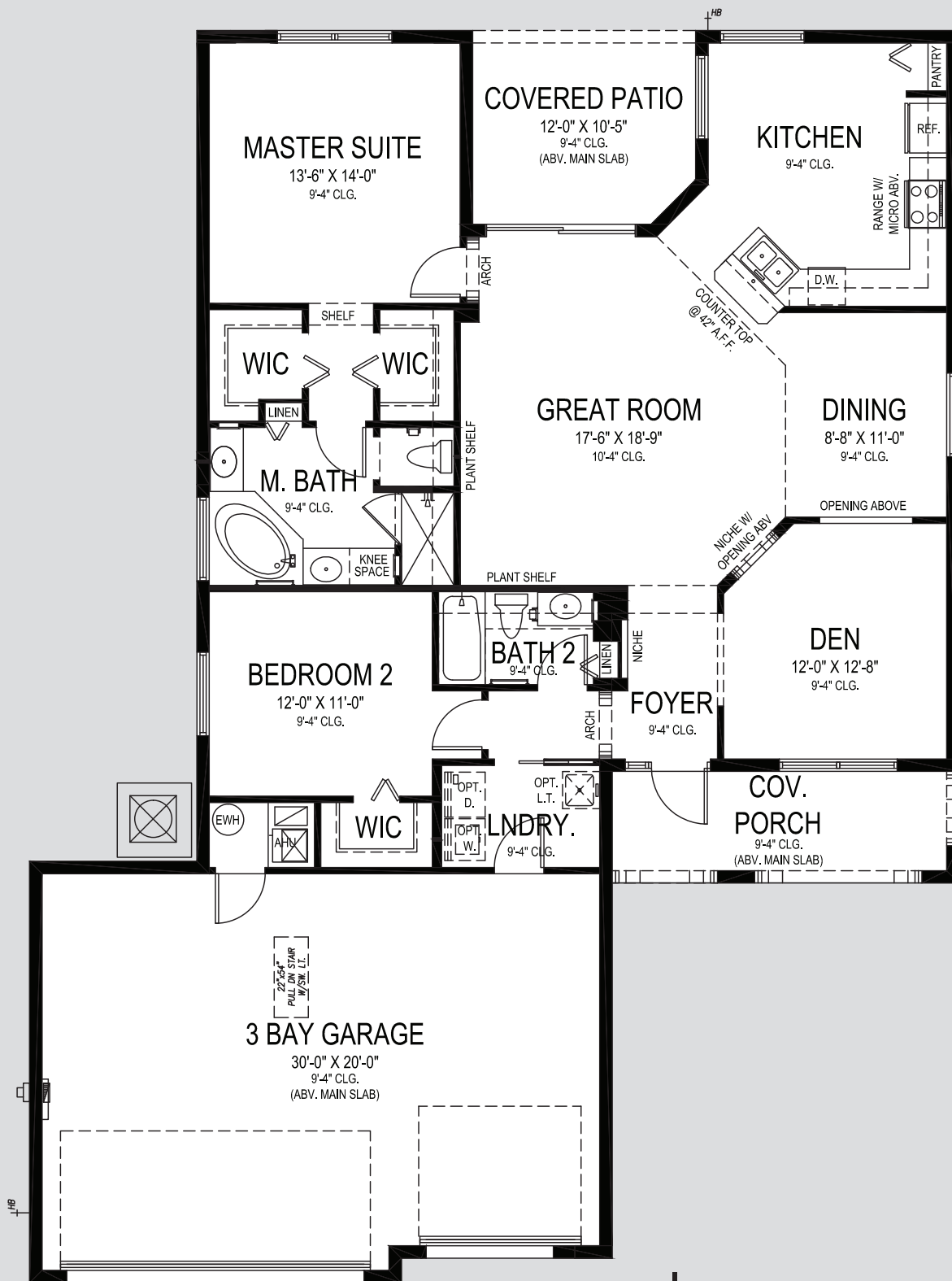
GHO HOMES

772.257.1100 | ghohomes.com

APPROXIMATE AREAS	
Air Conditioned	2,586 Sq. Ft.
Covered Entry	128 Sq. Ft.
Covered Patio	224 Sq. Ft.
3 Bay Garage	608 Sq. Ft.
TOTAL	3,546 Sq. Ft.



All dimensions, features, specifications and square footages are approximate and subject to change without notice. Maps, plans, landscaping and elevation renderings are artist's conceptions, are not to scale, and may not accurately depict the homes or lots as they are built.



50'W X 69' D

Waterton 3 - 3 Car

GHO HOMES

772.257.1100 | www.ghohomes.com

APPROXIMATE AREAS

Air Conditioned1,634 Sq. Ft.
 Covered Entry 112 Sq. Ft.
 Covered Patio 122 Sq. Ft.
 3 Bay Garage 683 Sq. Ft.
TOTAL2,551 Sq. Ft.



All Dimensions, Features, Specifications and Square Footages are approximate and subject to change without notice. Maps, plans, landscaping and elevation renderings are artist's conceptions, are not to scale, and may not accurately depict the homes or lots as they are built.



COMMUNITY FEATURES LIST

Fieldstone Ranch

Created: Nov-02-2016

Construction Features

- **Structural Design Per Florida Current Building Codes and Design Standards**
- ☑ **Double Row Steel & Concrete Bond Beam**
- ☑ **Plywood 5/8" (19/32) Roof Sheathing (no particle board)**
- Concrete Slab on Grade with Steel Reinforcement and Fibermesh Concrete
- **Sentricon Termite Treatment and Control System - 1 year service included**
- **Concrete Block Construction with Concrete and Steel Reinforcement**
- **Professionally Engineered Roof Trusses with Hurricane Straps**
- Concrete Based Textured Exterior Wall Finish
- Steel Hurricane Shutters for all Non-Impact Glass Windows and Doors
- Underground Connection to FPL Supplied Electrical Power
- ☑ **Taexx Built In Pest Control Delivery System Installed**

Exterior Features

- **Concrete Tile Roof System, Choice of Flat or Roll Style and Select Colors**
- ☑ **White Aluminum Frame Dual Pane Insulated Low-E Glass Windows and Sliding Glass Doors - per plan**
- **Sherwin Williams Loxon Acrylic Exterior Paint on Exterior Walls of Home**
- **Wind Rated Garage Doors with Remote-Controlled Openers (2 remotes)**
- **Paver Driveway, Front Walks and Rear Covered Patio Floor**
- Exterior Garden Hose Connections (2)
- Exterior GFI Electric Outlets (2)
- ☑ **Fiberglass Textured Raised-Panel 8' Front Doors with Clear Impact Glass Single Lite Sidelites - per plan**
- **Professionally Designed Landscaped Package and Floratam Sod**
- Automatic Underground Irrigation System, Irrigation Water supplied by Community Master Pump (Phase 1, only) or Individual Well and Pump

Utility Room and Garage

- ☑ **Drop Down Stairs to Attic Area**
- Lighting Provided for Garage and Utility Room

GHO HOMES 772.257.1100 | ghohomes.com



Seller reserves the right to make changes or modifications to plans, maps, plan specifications, materials, features, and colors without notice. Prices are subject to change without notice. Maps, plans, landscaping and elevation renderings are artist's conceptions, are not to scale, and may not accurately depict the homes or lots as they are built. This brochure is for illustrative purposes only and not a part of a legal contract. Picture and floor plan shown above is likely not the actual home being offered, but a similar home/model.



COMMUNITY FEATURES LIST

Fieldstone Ranch

Created: Nov-02-2016

Gourmet Kitchens

- ☑ **Wood Raised Panel Cabinet Doors 42" Uppers - "Saybrook Series"**
- ☑ **Granite or Quartz Kitchen Counter Top, with 4 inch back splash, layout per plan (GHO Level 1 Selections)**
- ☑ **Kitchen Faucet: Moen Arbor Pull Out Spray - Stainless Steel Finish**
 - **Stainless Steel Undermount Kitchen Sink 70/30 Split**
- ☑ **GE Stainless Steel Finish Appliance Package**
- ☑ **GE Refrigerator: 25 cft Side by Side with Ice Maker - Energy Star Rated**
- ☑ **GE Range: Freestanding Glass Top Range**
- ☑ **GE Microwave: Installed Over Range**
- ☑ **GE Dishwasher: Insulated and Multi--Cycle - Energy Star Rated**
 - **Walk-in Pantry with Vinyl Clad Ventilated Shelving - per plan**
 - **Recessed HiHat Lighting - per plan**

Luxury Bathrooms

- ☑ **Oversized Walk-In Roman Showers - per plan**
 - ☑ **Built in Shower Seat in Master Shower, Ceramic Tile Finish - per plan**
 - **Moen Pressure Balance Control Valves for all Showers**
 - **Clear Glass Shower Enclosures or Glass Panels - per plan**
 - ☑ **Wood Raised Panel Vanity Doors, Raised Height Vanities -**
 - **Cultured Marble Vanity Tops with Integral Sink - choice of designer colors**
 - **Cultured Marble Roman Tub with Deck Mounted Valve - per plan**
 - **Sterling Vikrell® Tub/Shower Combo in Secondary Bathroom(s)**
 - **Ceramic Tile Bathroom Floors with Walls and Shower Floors - White Wall Tile, Guest Baths**
 - ☑ **Ceramic Tile Bathroom Floors with Walls and Shower Floors - Choice of Deco Wall Tile Packages with Listello**
- Features, Master Bath**
- **Moen Single Lever Chrome Bathroom Sink, Shower and Bathtub Fixtures**
 - **Full Width Oversized Height Vanity Mirrors**
 - **Clear Glass Windows in all Bath with Frosted Windows Option**

Interior Appointments

- ☑ **Colonist Raised Panel 8 Ft Interior Doors**
- ☑ **Built-In Bar Base Cabinets with Granite or Quartz Counter Top, on select plans (Match Kitchen - per plan)**
 - **Marble Window Sills Throughout Living Area**

GHO HOMES 772.257.1100 | ghohomes.com



Seller reserves the right to make changes or modifications to plans, maps, plan specifications, materials, features, and colors without notice. Prices are subject to change without notice. Maps, plans, landscaping and elevation renderings are artist's conceptions, are not to scale, and may not accurately depict the homes or lots as they are built. This brochure is for illustrative purposes only and not a part of a legal contract. Picture and floor plan shown above is likely not the actual home being offered, but a similar home/model.



COMMUNITY FEATURES LIST

Fieldstone Ranch

Created: Nov-02-2016

Ceramic Tile Flooring in Foyer, Kitchen, Halls, Great Room or Family Room & Living Room, Dining Room and Utility Room - layouts per plan (GHO Level 1 Selections)

- Designer Flooring Collection - Choice of Select Oversized Ceramic Floor Tile
- Wall-to-Wall Carpet in Choice of Designer Colors in all Bedrooms and Den (GHO Level 1 Selections)

Interior Design Features

- **Flex Plan Design -- offering many possible options for your lifestyle**
- Rounded Interior Wall Corners, Excluding Windows, Doors, Sliding Glass Doors, and Closets - per plan**
- **Flat Volume Ceilings - Minimum over 9feet High (per plan)**
- Designer Knockdown Texture on Ceilings
- Air-Conditioned Walk-In Closets - per plan
- **Designer Arches, Niches and Pot Shelves - per plan**
- Vinyl Clad Shelving in all Closets - per plan

Electrical Specifications

- **Recessed HiHat Lighting in Kitchen, Halls, Covered Entry and Patio**
- **Ceiling Fan Pre-Wire in all Bedrooms, Den and Great Rooms and Patio**
- **Walk-In Closet Lighting - per plan**
- Decorative Rocker Type Switches
- **Pre-Wired for (3) Phone Outlets in Home**
- **Pre-Wired for (3) Cable Television Outlets**

Energy Efficient & Safety Features

- High Efficiency Air Conditioning System - Rheem 16 SEER / Straight Cool / Sized Per Home**
- HVAC AC Filter Access Located at AC Unit or in Adjacent Side-Wall for Easy Access - per plan**
- NEST Next Generation Learning Thermostat**
- Energy Efficient R4.1 Concrete Block Wall Insulation
- Energy Efficient R11 Garage to House Wall Insulation
- **Energy Efficient R-30 Attic Insulation over Conditioned Space**
- Dual Pane Low E Coated Glass on Windows / Sliding Glass Doors**
- Quick Recovery Electric Water Heater - 50 Gallon
- ARC Fault Electrical Outlets Per Code
- Smoke and Carbon Monoxide Detectors per code

GHO HOMES 772.257.1100 | ghohomes.com



Seller reserves the right to make changes or modifications to plans, maps, plan specifications, materials, features, and colors without notice. Prices are subject to change without notice. Maps, plans, landscaping and elevation renderings are artist's conceptions, are not to scale, and may not accurately depict the homes or lots as they are built. This brochure is for illustrative purposes only and not a part of a legal contract. Picture and floor plan shown above is likely not the actual home being offered, but a similar home/model.



COMMUNITY FEATURES LIST

Fieldstone Ranch

Created: Nov-02-2016



GHO Homes sets a higher standard in appointing our homes. The features that set us apart from other builders are our Ultimate Features - denoted by the check mark icon - which come standard in each of our homes.

Additional Tailor Made home design options to choose from include built-in entertainment centers, wet bars, screened-in pools and luxurious finishes and upgrades. From flooring to cabinetry and custom room designs, we've made it easy and affordable to realize your dreams.

GHO HOMES 772.257.1100 | ghohomes.com



Seller reserves the right to make changes or modifications to plans, maps, plan specifications, materials, features, and colors without notice. Prices are subject to change without notice. Maps, plans, landscaping and elevation renderings are artist's conceptions, are not to scale, and may not accurately depict the homes or lots as they are built. This brochure is for illustrative purposes only and not a part of a legal contract. Picture and floor plan shown above is likely not the actual home being offered, but a similar home/model.