



COMMUNITY PRICE LIST

Created: Jun-29-2018

Lake Mandarin at Citrus Springs

Floorplans

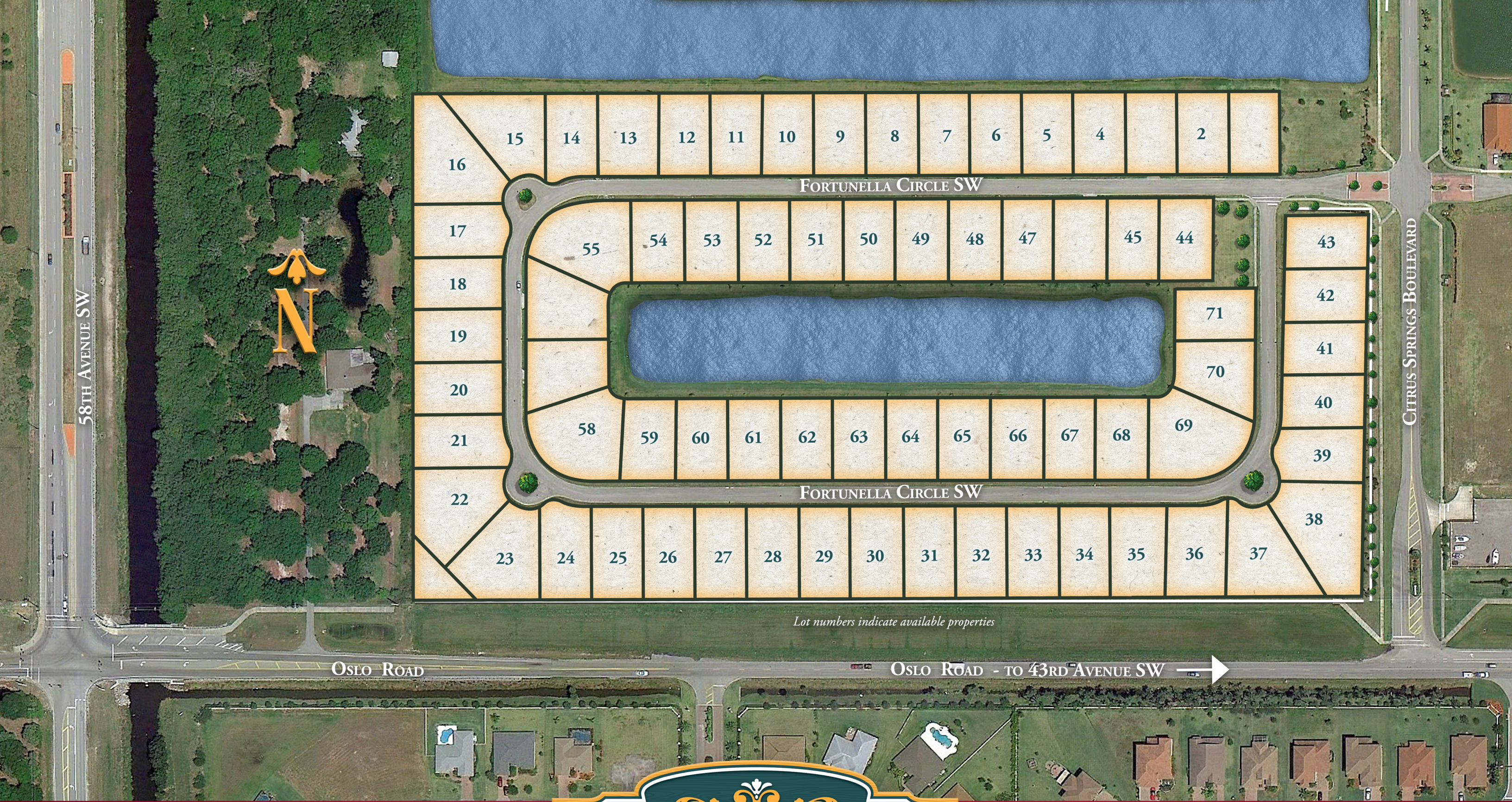
Floorplan	Bed	Bath	Den	Garage	Sq.Ft.	Priced From
Amberjack	3	3	No	2 Bay	2,068	TBD
Avalon	3	3	No	2 Bay	2,284	TBD
Carmel Grande 12	3	2	Yes	2 Bay	2,416	TBD
Columbia	3	2	No	3 Bay	2,060	TBD
Columbia Grande	4	2	No	2 Bay	2,260	TBD
Glendale	2	2	Yes	2+ Bay	1,854	TBD
Tacoma	3	3	Yes	2+ Bay	2,514	TBD

To Learn More About These Homes Please Contact

GHO HOMES 772.257.1100 | ghohomes.com



Seller reserves the right to make changes or modifications to plans, maps, plan specifications, materials, features, and colors without notice. Prices are subject to change without notice. Maps, plans, landscaping and elevation renderings are artist's conceptions, are not to scale, and may not accurately depict the homes or lots as they are built. This brochure is for illustrative purposes only and not a part of a legal contract. Picture and floor plan shown above is likely not the actual home being offered, but a similar home/model.



Lot numbers indicate available properties

GHO HOMES

LAKE MANDARIN

772-257-1100 | ghohomes.com

All dimensions, features, specifications and square footages are approximate and subject to change without notice. Maps, plans, landscaping and elevation renderings are artist's conceptions, are not to scale, and may not accurately depict the homes or lots as they are built.



CBC051145



DRAFT*

*Subject to change

60' W x 62'-8" D | **Amberjack**

GHO HOMES

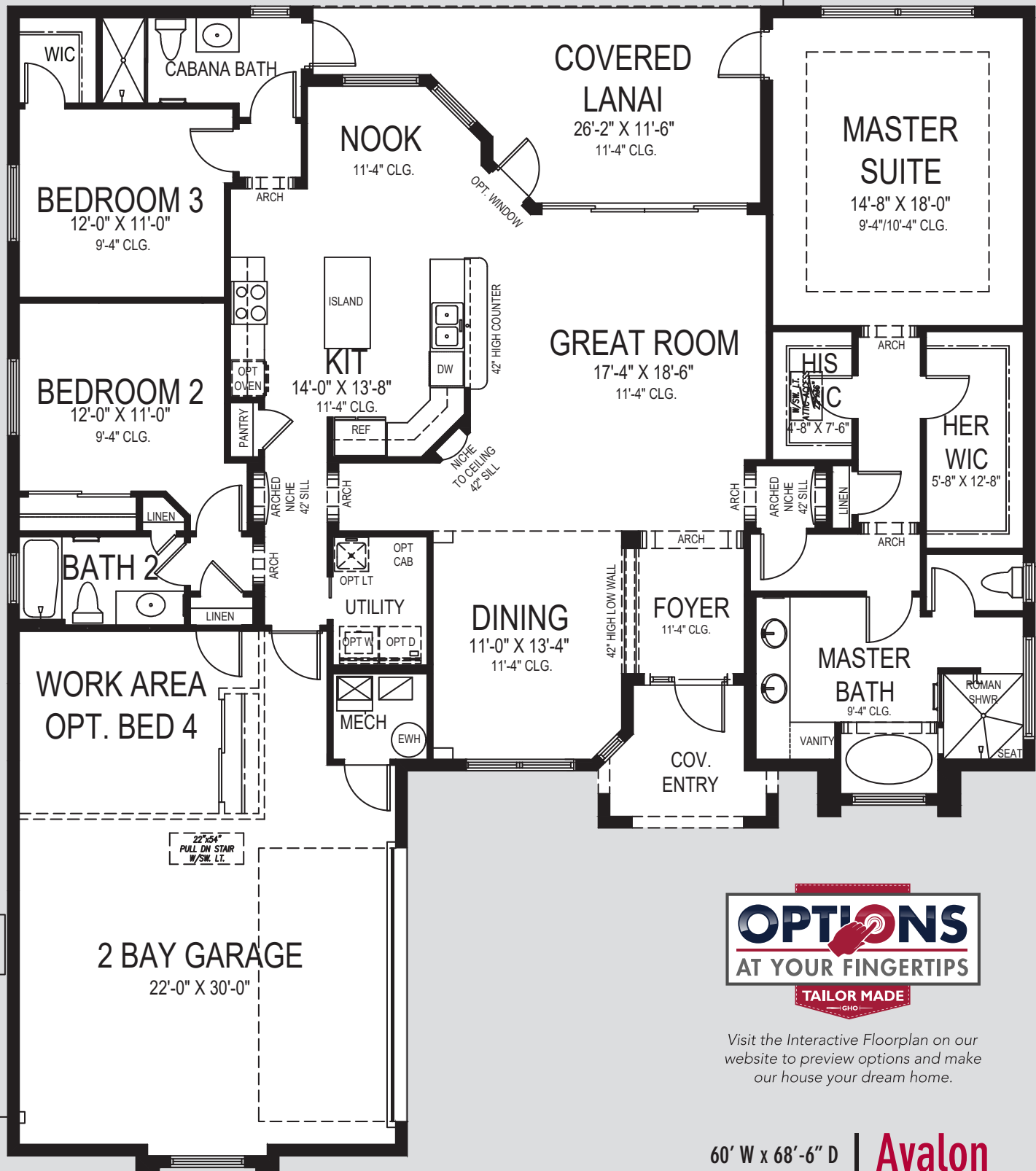
772.257.1100 | ghohomes.com

APPROXIMATE AREAS

Air Conditioned 2,068 Sq. Ft.
Covered Entry 50 Sq. Ft.
Covered Patio 219 Sq. Ft.
2 Bay Garage 579 Sq. Ft.
TOTAL 2,916 Sq. Ft.



All dimensions, features, specifications and square footages are approximate and subject to change without notice. Maps, plans, landscaping and elevation renderings are artist's conceptions, are not to scale, and may not accurately depict the homes or lots as they are built.



Visit the Interactive Floorplan on our website to preview options and make our house your dream home.

60' W x 68'-6" D | **Avalon**

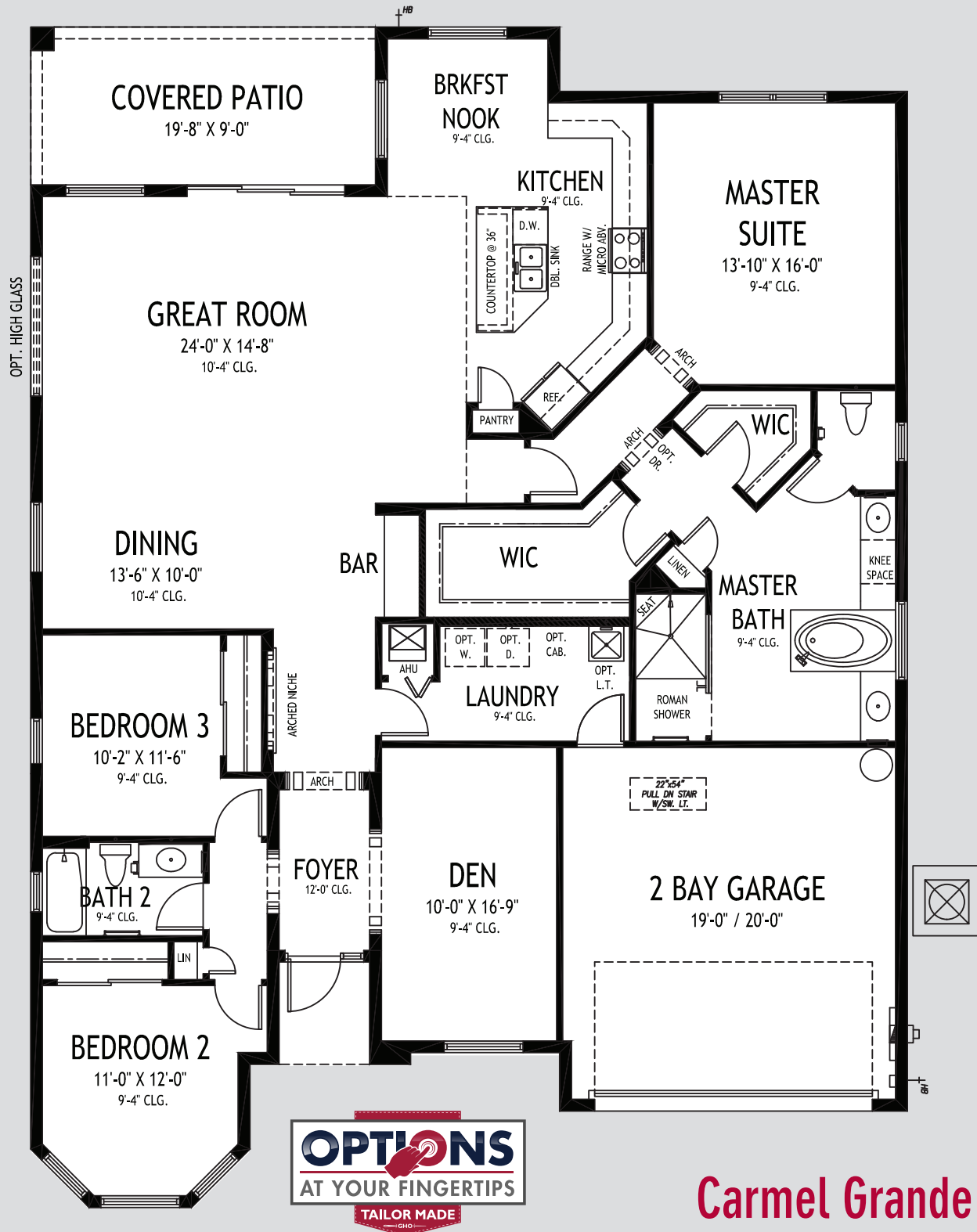
GHO HOMES

772.257.1100 | ghohomes.com

APPROXIMATE AREAS	
Air Conditioned	2,254 Sq. Ft.
Covered Entry	76 Sq. Ft.
Covered Patio	226 Sq. Ft.
2 Bay Garage	687 Sq. Ft.
TOTAL	3,243 Sq. Ft.



All dimensions, features, specifications and square footages are approximate and subject to change without notice. Maps, plans, landscaping and elevation renderings are artist's conceptions, are not to scale, and may not accurately depict the homes or lots as they are built.



Carmel Grande 12

50' W x 67'-4" D

Visit the Interactive Floorplan on our website to preview options and make our house your dream home.

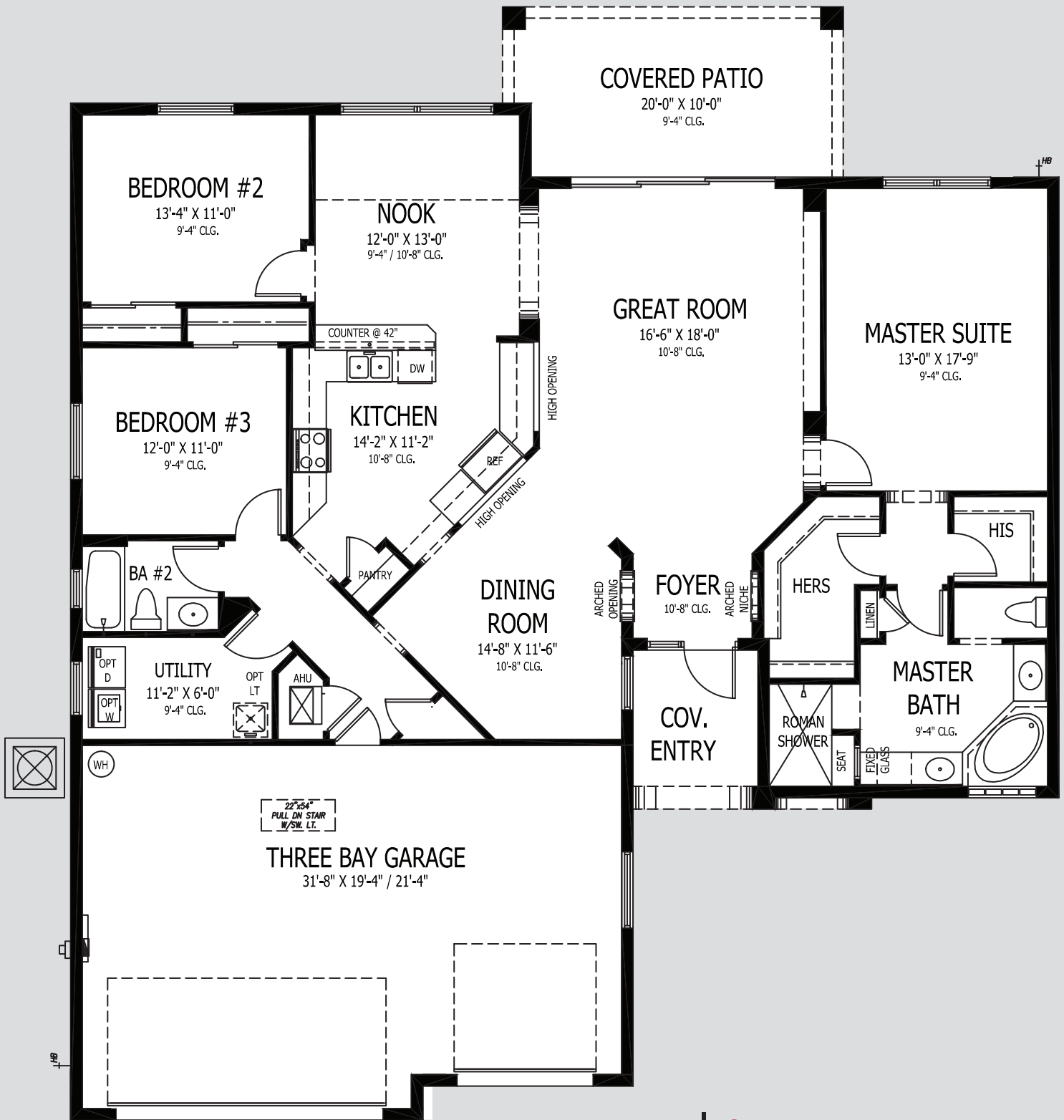
GHO HOMES

772.257.1100 | www.ghohomes.com

APPROXIMATE AREAS	
Air Conditioned	2,408 Sq. Ft.
Covered Entry	30 Sq. Ft.
Covered Patio	177 Sq. Ft.
2 Bay Garage	409 Sq. Ft.
TOTAL	3,024 Sq. Ft.



All dimensions, features, specifications and square footages are approximate and subject to change without notice. Maps, plans, landscaping and elevation renderings are artist's conceptions, are not to scale, and may not accurately depict the homes or lots as they are built.



58'W X 65'4" D

Columbia

GHO HOMES

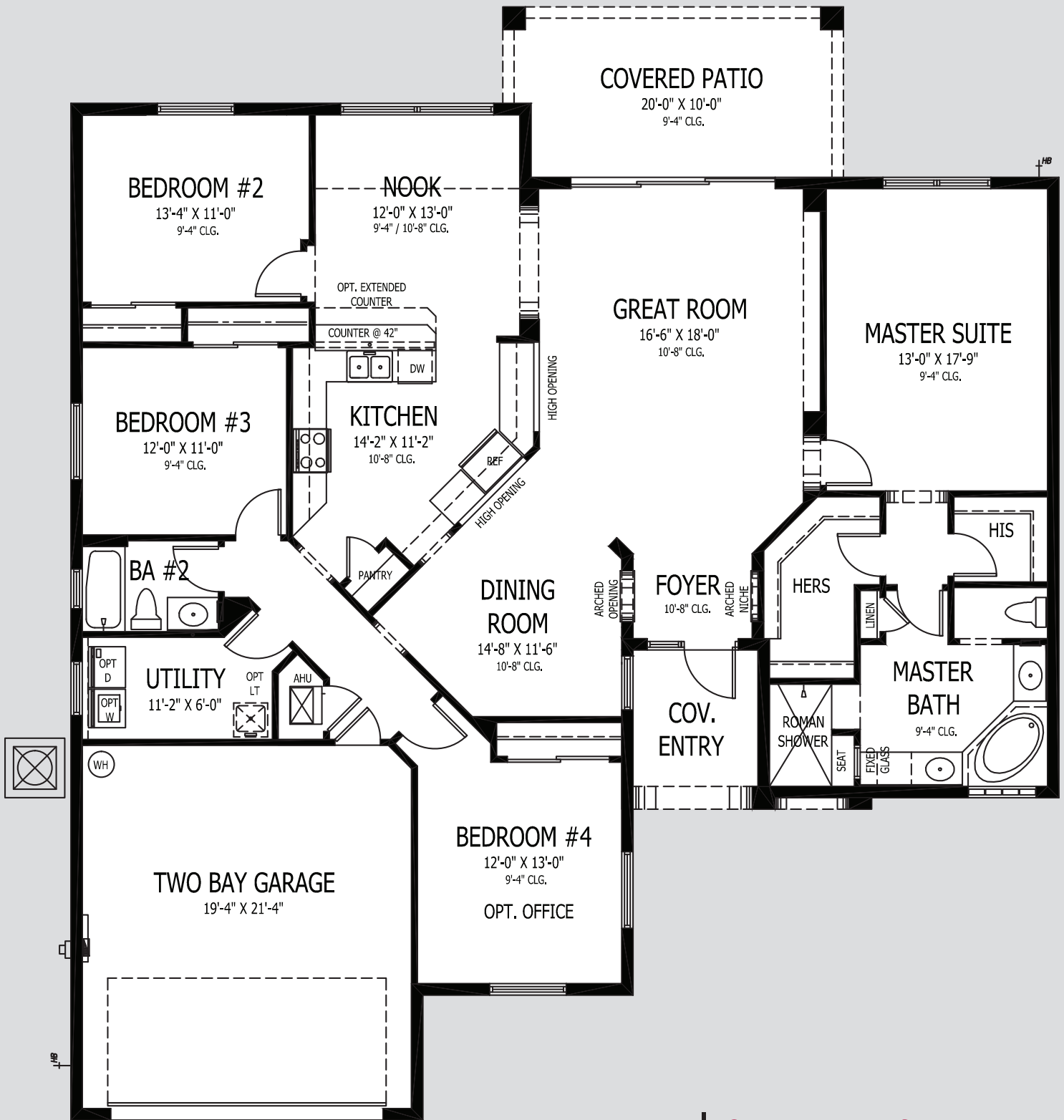
772.257.1100 | www.ghohomes.com

APPROXIMATE AREAS

Air Conditioned 2,069 Sq. Ft.
Covered Entry 68 Sq. Ft.
Covered Patio 193 Sq. Ft.
3 Bay Garage 702 Sq. Ft.
TOTAL 3,032 Sq. Ft.



All Dimensions, Features, Specifications and Square Footages are approximate and subject to change without notice. Maps, plans, landscaping and elevation renderings are artist's conceptions, are not to scale, and may not accurately depict the homes or lots as they are built.



58'W X 65'4" D

Columbia Grande

GHO HOMES

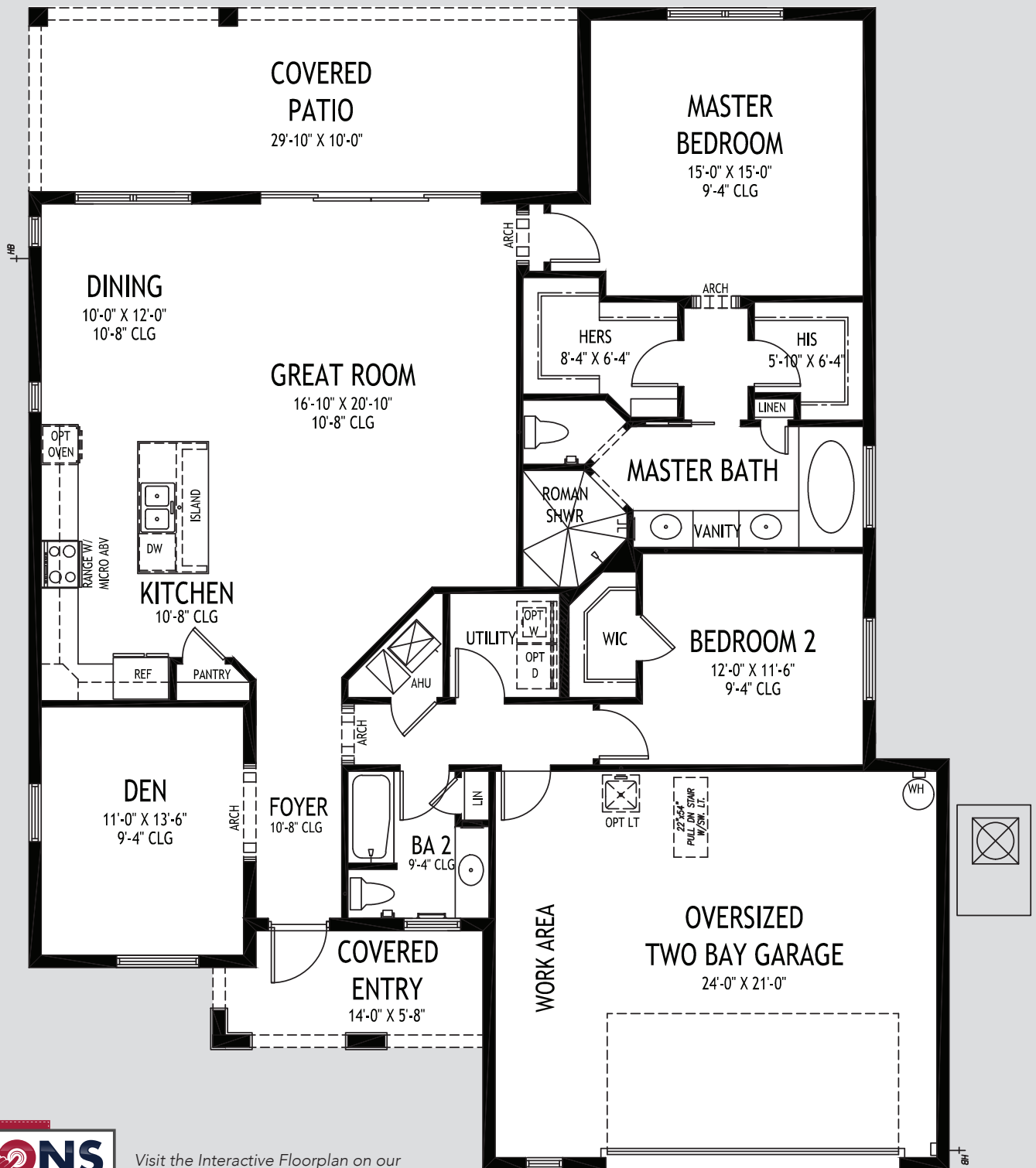
772.257.1100 | www.ghohomes.com

APPROXIMATE AREAS

Air Conditioned 2,260 Sq. Ft.
 Covered Entry 69 Sq. Ft.
 Covered Patio 193 Sq. Ft.
 2 Bay Garage 445 Sq. Ft.
TOTAL 2,967 Sq. Ft.



All Dimensions, Features, Specifications and Square Footages are approximate and subject to change without notice. Maps, plans, landscaping and elevation renderings are artist's conceptions, are not to scale, and may not accurately depict the homes or lots as they are built.



Visit the Interactive Floorplan on our website to preview options and make our house your dream home.

50' W x 63' D | **Glendale**

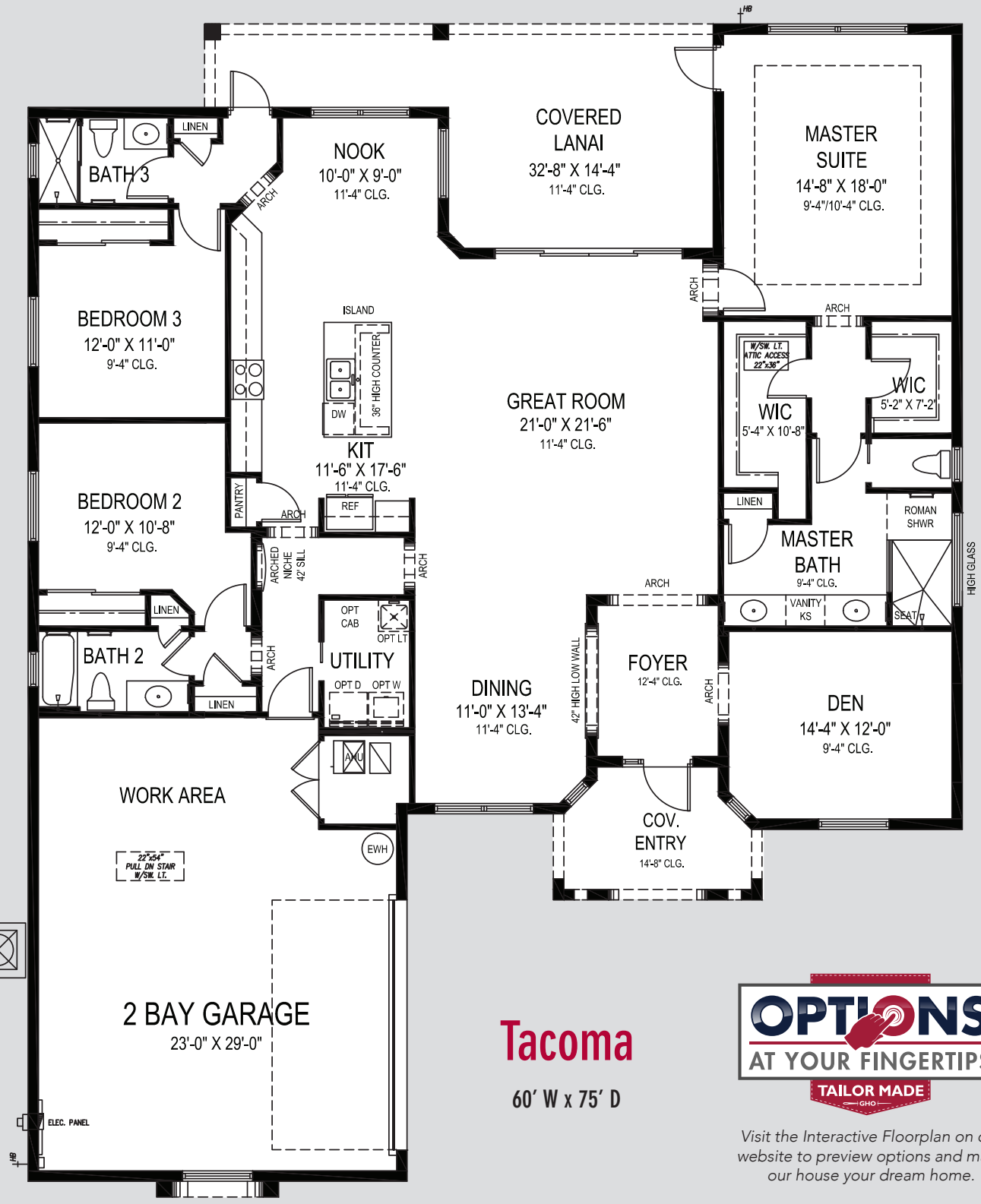
GHO HOMES

772.257.1100 | ghohomes.com

APPROXIMATE AREAS	
Air Conditioned	1,854 Sq. Ft.
Covered Entry	88 Sq. Ft.
Covered Patio	297 Sq. Ft.
2 Bay Garage	546 Sq. Ft.
TOTAL	2,785 Sq. Ft.



All dimensions, features, specifications and square footages are approximate and subject to change without notice. Maps, plans, landscaping and elevation renderings are artist's conceptions, are not to scale, and may not accurately depict the homes or lots as they are built.



Tacoma
60' W x 75' D



Visit the Interactive Floorplan on our website to preview options and make our house your dream home.

GHO HOMES

772.257.1100 | ghohomes.com

APPROXIMATE AREAS	
Air Conditioned	2,522 Sq. Ft.
Covered Entry	98 Sq. Ft.
Covered Patio	326 Sq. Ft.
2 Bay Garage	689 Sq. Ft.
TOTAL	3,635 Sq. Ft.



All dimensions, features, specifications and square footages are approximate and subject to change without notice. Maps, plans, landscaping and elevation renderings are artist's conceptions, are not to scale, and may not accurately depict the homes or lots as they are built.



COMMUNITY FEATURES LIST

Lake Mandarin at Citrus Springs

Created: Jun-29-2018

Construction Features

- **Structural Design Per Florida Current Building Codes and Design Standards**
- ☑ **Double Row Steel & Concrete Bond Beam**
- ☑ **Plywood 5/8" (19/32) Roof Sheathing (no particle board)**
- Concrete Slab on Grade with Steel Reinforcement and Fibermesh Concrete
- **Sentricon Termite Treatment and Control System - 1 year service included**
- **Concrete Block Construction with Concrete and Steel Reinforcement**
- **Professionally Engineered Roof Trusses with Hurricane Straps**
- Concrete Based Textured Exterior Wall Finish
- Steel Hurricane Shutters for all Non-Impact Glass Windows and Doors
- Underground County/City Electrical, Water and Sewer Connections
- Underground Connection to FPL Supplied Electrical Power
- ☑ **Taexx Built In Pest Control Delivery System Installed**

Exterior Features

- **Dimensional Roof Shingles with 30 Year Warranty**
- ☑ **White Aluminum Frame Dual Pane Insulated Low-E Glass Windows and Sliding Glass Doors - per plan**
- **Sherwin Williams Loxon Acrylic Exterior Paint on Exterior Walls of Home**
- **Wind Rated Garage Doors with Remote-Controlled Openers (2 remotes)**
- **Paver Driveway, Front Walks and Rear Covered Patio Floor**
- Exterior Garden Hose Connections (2)
- Exterior GFI Electric Outlets (2)
- ☑ **Fiberglass Textured Raised-Panel 8' Front Doors with Clear Impact Glass Single Lite Sidelites - per plan**
- **Professionally Designed Landscaped Package and Floratam Sod**
- **Automatic Underground Irrigation System, Irrigation Water supplied by Individual Well and Pump**

Utility Room and Garage

- ☑ **Drop Down Stairs to Attic Area**
- Lighting Provided for Garage and Utility Room

GHO HOMES 772.257.1100 | ghohomes.com



Seller reserves the right to make changes or modifications to plans, maps, plan specifications, materials, features, and colors without notice. Prices are subject to change without notice. Maps, plans, landscaping and elevation renderings are artist's conceptions, are not to scale, and may not accurately depict the homes or lots as they are built. This brochure is for illustrative purposes only and not a part of a legal contract. Picture and floor plan shown above is likely not the actual home being offered, but a similar home/model.



COMMUNITY FEATURES LIST

Lake Mandarin at Citrus Springs

Created: Jun-29-2018

Gourmet Kitchens

- ☑ **Wood Raised Panel Cabinet Doors 42" Uppers - "Saybrook Series"**
- ☑ **Granite or Quartz Kitchen Counter Top, with 4 inch back splash, layout per plan (GHO Level 1 Selections)**
- ☑ **Kitchen Faucet: Moen Arbor Pull Out Spray - Stainless Steel Finish**
 - **Stainless Steel Undermount Kitchen Sink 70/30 Split**
- ☑ **GE Stainless Steel Finish Appliance Package**
- ☑ **GE Refrigerator: 25 cft Side by Side with Ice Maker - Energy Star Rated**
- ☑ **GE Range: Freestanding Glass Top Range**
- ☑ **GE Microwave: Installed Over Range**
- ☑ **GE Dishwasher: Insulated and Multi-Cycle (Stainless Steel Tub) - Energy Star Rated**
 - Flooring: Ceramic Tile in Kitchen and Breakfast Rooms per plan
 - **Walk-in Pantry with Vinyl Clad Ventilated Shelving - per plan**
 - Recessed HiHat Lighting - per plan

Luxury Bathrooms

- ☑ **Oversized Walk-In Roman Showers - per plan**
- ☑ **Built in Shower Seat in Master Shower, Ceramic Tile Finish - per plan**
 - Moen Pressure Balance Control Valves for all Showers
 - **Clear Glass Shower Enclosures or Glass Panels - per plan**
- ☑ **Wood Raised Panel Vanity Doors, Raised Height Vanities - Saybrook Series (GHO Level 1)**
 - Cultured Marble Vanity Tops with Integral Sink - choice of designer colors
 - Cultured Marble Roman Tub with Deck Mounted Valve - per plan
 - Enamel Steel Tub/Shower combo in Secondary Bathroom(s)
 - Ceramic Tile Bathroom Floors with Walls and Shower Floors - White Wall Tile, Guest Baths
- ☑ **Ceramic Tile Bathroom Floors with Walls and Shower Floors - Choice of Deco Wall Tile Packages with Listello**

Features, Master Bath

- Moen Single Lever Chrome Shower and Bathtub Fixtures
- Elongated White Toilets in all Bathrooms
- **Full Width Oversized Height Vanity Mirrors**
- Clear Glass Windows in all Baths with Frosted Windows Option

GHO HOMES 772.257.1100 | ghohomes.com



Seller reserves the right to make changes or modifications to plans, maps, plan specifications, materials, features, and colors without notice. Prices are subject to change without notice. Maps, plans, landscaping and elevation renderings are artist's conceptions, are not to scale, and may not accurately depict the homes or lots as they are built. This brochure is for illustrative purposes only and not a part of a legal contract. Picture and floor plan shown above is likely not the actual home being offered, but a similar home/model.



COMMUNITY FEATURES LIST

Lake Mandarin at Citrus Springs

Created: Jun-29-2018

Interior Appointments

Colonist Raised Panel 8 Ft Tall Interior Doors

- Solid Surface White Window Sills Throughout Living Area

Ceramic Tile Flooring in Foyer, Kitchen, Halls, Great Room or Family Room & Living Room, Dining Room and Utility Room - layouts per plan (GHO Level 1 Selections)

- Designer Flooring Collection - Choice of Select Oversized Ceramic Floor Tile
- Wall-to-Wall Carpet in Choice of Designer Colors in all Bedrooms and Den (GHO Level 1 Selections)

Interior Design Features

- **Flex Plan Design -- offering many possible options for your lifestyle**

Rounded Interior Wall Corners, Excluding Windows, Doors, Sliding Glass Doors, Bathrooms, Garages, Ceilings and Closets - per plan

- **Flat Volume Ceilings - Minimum over 9feet High (per plan)**
- Designer Knockdown Texture on Ceilings
- Air-Conditioned Walk-In Closets - per plan
- **Designer Arches, Niches and Pot Shelves - per plan**
- Vinyl Clad Shelving in all Closets - per plan

Electrical Specifications

- **Recessed HiHat Lighting in Kitchen, Halls, Covered Entry and Patio**
- **Walk-In Closet Lighting - per plan**
- Decorative Rocker Type Switches
- **Pre-Wired for (3) Phone Outlets in Home**
- **Pre-Wired for (3) Cable Television Outlets**

Energy Efficient & Safety Features

High Efficiency Air Conditioning System - Carrier (or Equivalent) 16 SEER / Straight Cool / Sized Per Home

HVAC AC Filter Access Located at AC Unit or in Adjacent Side-Wall for Easy Access - per plan

NEST Next Generation Learning Thermostat

- Energy Efficient R4.1 Concrete Block Wall Insulation
- Energy Efficient R11 Garage to House Wall Insulation
- **Energy Efficient R-30 Attic Insulation over Conditioned Space**

Dual Pane Low E Coated Glass on Windows / Sliding Glass Doors

GHO HOMES 772.257.1100 | ghohomes.com



Seller reserves the right to make changes or modifications to plans, maps, plan specifications, materials, features, and colors without notice. Prices are subject to change without notice. Maps, plans, landscaping and elevation renderings are artist's conceptions, are not to scale, and may not accurately depict the homes or lots as they are built. This brochure is for illustrative purposes only and not a part of a legal contract. Picture and floor plan shown above is likely not the actual home being offered, but a similar home/model.



COMMUNITY FEATURES LIST

Lake Mandarin at Citrus Springs

Created: Jun-29-2018

- Quick Recovery Electric Water Heater - 50 Gallon
- ARC Fault Electrical Outlets Per Code
- Smoke and Carbon Monoxide Detectors per code
- **Natural Gas Available, see sales associate for details**
- **Optional Natural Gas Service with Gas Water Heater, and Cook Top and Connection Clothes Dryer**

GHO HOMES 772.257.1100 | ghohomes.com



Seller reserves the right to make changes or modifications to plans, maps, plan specifications, materials, features, and colors without notice. Prices are subject to change without notice. Maps, plans, landscaping and elevation renderings are artist's conceptions, are not to scale, and may not accurately depict the homes or lots as they are built. This brochure is for illustrative purposes only and not a part of a legal contract. Picture and floor plan shown above is likely not the actual home being offered, but a similar home/model.