



# COMMUNITY PRICE LIST

Created: Dec-22-2021

## Lake Sapphire

### Floorplans

Floorplan	Bed	Bath	Den	Garage	Sq.Ft.	Priced From
<b>Coquina</b>	3	2.5	Yes	3 Bay	2,727	<b>TBD</b>
<b>Magnolia</b>	3	3	Yes	3 Bay	2,612	<b>TBD</b>
<b>Tacoma LS</b>	3	3	Yes	2+ Bay	2,525	<b>TBD</b>
<b>Verona</b>	3	3.5	Yes	2 Bay	3,186	<b>TBD</b>
<b>Windsong</b>	3	3	Yes	2+ Bay	2,747	<b>TBD</b>

All prices above include a standard home site from GHO's collection of Lake Sapphire lots. Some lot premiums may apply.

All homes include GHO's Ultimate Standard Features specific to Lake Sapphire including a Customizable Pool Package. Note that pools will need to be designed and fit for each customer's choice of home design, lot and home changes and as such, some designs could be changed or compromised or require added cost to the buyer for the layout, retaining walls, deck-screen shape or size or other circumstances.

See the community features list for specific details.

## To Learn More About These Homes Please Contact

**GHO HOMES** 772.257.1100 | [ghohomes.com](http://ghohomes.com)

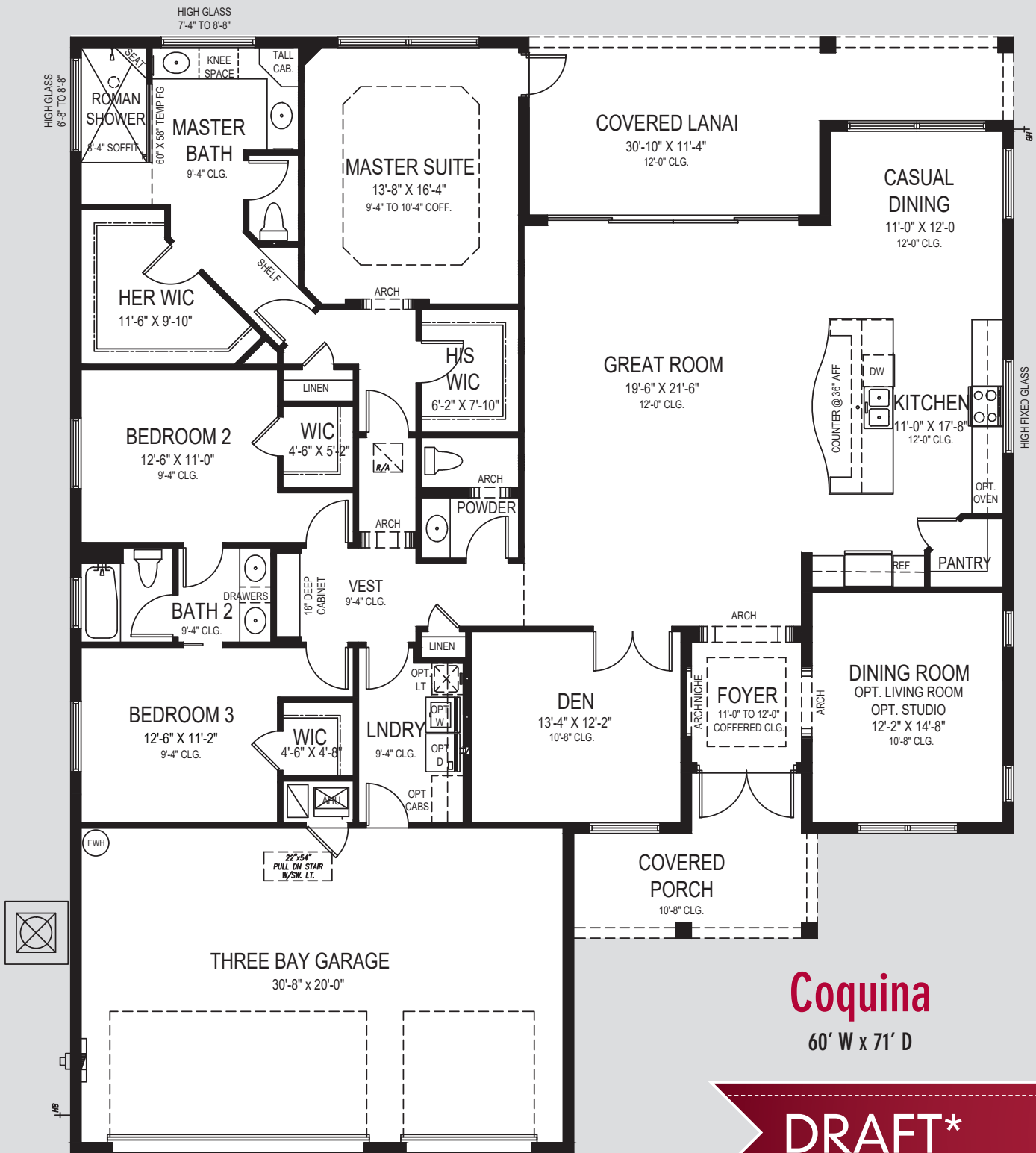


Seller reserves the right to make changes or modifications to plans, maps, plan specifications, materials, features, and colors without notice. Prices are subject to change without notice. Maps, plans, landscaping and elevation renderings are artist's conceptions, are not to scale, and may not accurately depict the homes or lots as they are built. This brochure is for illustrative purposes only and not a part of a legal contract. Picture and floor plan shown above is likely not the actual home being offered, but a similar home/model.

# LAKE SAPPHIRE







# Coquina

60' W x 71' D

**DRAFT\***

\*Subject to change

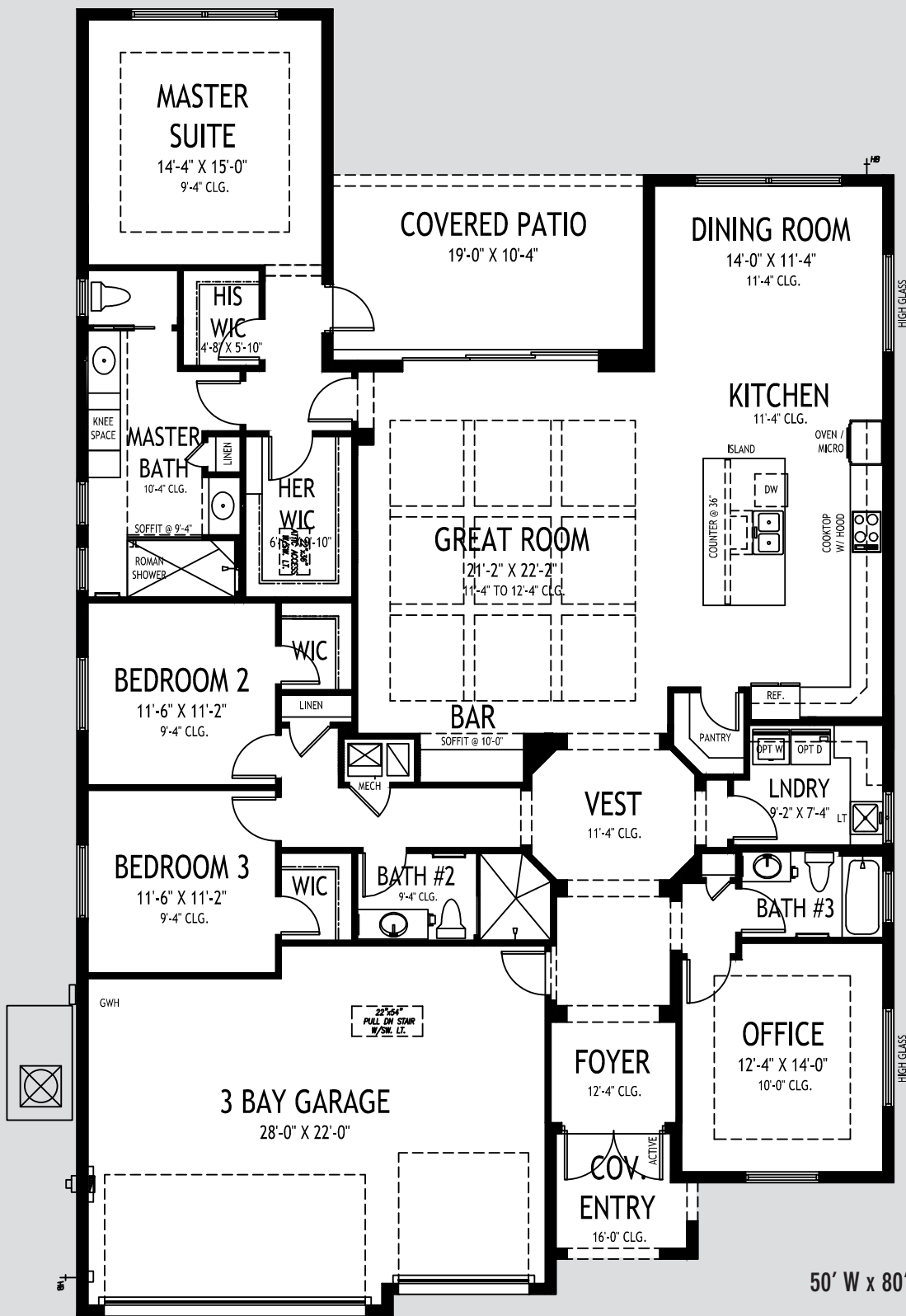
# GHO HOMES

772.257.1100 | ghohomes.com

APPROXIMATE AREAS	
Air Conditioned .....	2,727 Sq. Ft.
Covered Entry .....	130 Sq. Ft.
Covered Patio .....	275 Sq. Ft.
3 Bay Garage .....	661 Sq. Ft.
<b>TOTAL .....</b>	<b>3,793 Sq. Ft.</b>



All dimensions, features, specifications and square footages are approximate and subject to change without notice. Maps, plans, landscaping and elevation renderings are artist's conceptions, are not to scale, and may not accurately depict the homes or lots as they are built.



**DRAFT\***

\*Subject to change

50' W x 80' D | **Magnolia**

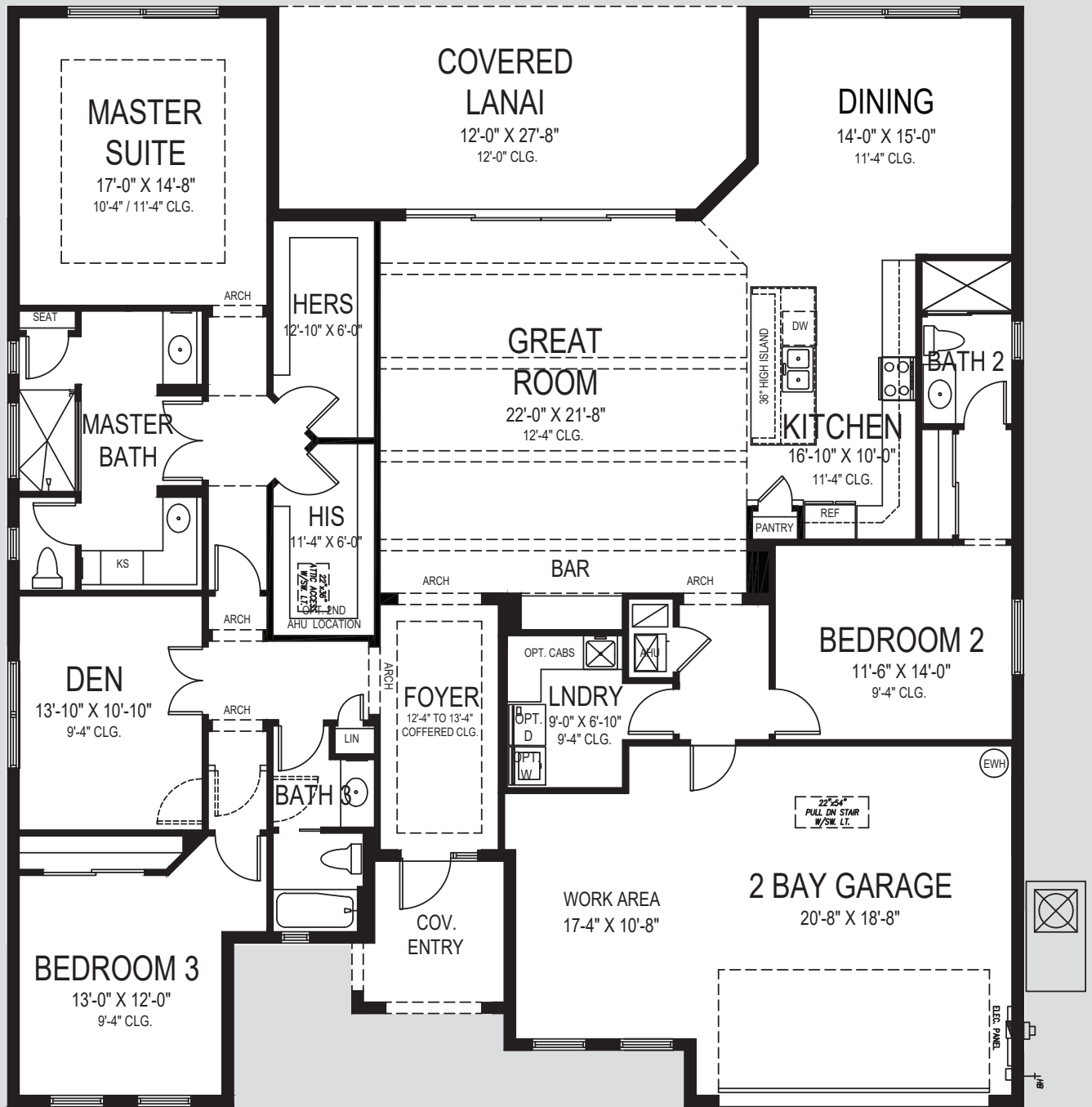
**GHO HOMES**  
 772.257.1100 | ghohomes.com

APPROXIMATE AREAS	
Air Conditioned .....	2,612 Sq. Ft.
Covered Entry .....	61 Sq. Ft.
Covered Patio .....	216 Sq. Ft.
3 Bay Garage .....	619 Sq. Ft.
<b>TOTAL .....</b>	<b>3,508 Sq. Ft.</b>

Equal Housing Opportunity  
 CBC051145  
 All dimensions, features, specifications and square footages are approximate and subject to change without notice. Maps, plans, landscaping and elevation renderings are artist's conceptions, are not to scale, and may not accurately depict the homes or lots as they are built.







Visit the Interactive Floorplan on our website to preview options and make our house your dream home.

**Windsong**  
60' W x 65' D



\*Subject to change

**GHO HOMES**

772.257.1100 | ghohomes.com

APPROXIMATE AREAS	
Air Conditioned	2,747 Sq. Ft.
Covered Entry	75 Sq. Ft.
Covered Patio	328 Sq. Ft.
2 Bay Garage	598 Sq. Ft.
<b>TOTAL</b>	<b>3,748 Sq. Ft.</b>



All dimensions, features, specifications and square footages are approximate and subject to change without notice. Maps, plans, landscaping and elevation renderings are artist's conceptions, are not to scale, and may not accurately depict the homes or lots as they are built.



# COMMUNITY FEATURES LIST

## Lake Sapphire

Created: Dec-22-2021

### "GHO Connectivity" Technology/Convenience Features

- ☑ GHO Smart Panel with 1 CAT6 data line & 4 RG6 cable TV locations, per plan, prewired for AT&T or Comcast
- ☑ Wall Mounted TV Package installed at 60 inches above floor in Master Suite and Great Room, includes Wall Backing w/wire pull chase rings, cable and power outlet at 60 inches above floor and below at standard wall height (locations included in Smart Panel description above)
- ☑ Automatic Garage Door Opener
- ☑ NEST Next Generation Learning Thermostat
- ☑ Nest Hello Video Door Bell - Wifi Ready
- ☑ Schlage Smart Deadbolt - Entry Door

### Construction Features

- Structural Design Per Florida Current Building Codes and Design Standards
- ☑ Double Row Steel & Concrete Bond Beam
- ☑ Plywood 5/8" (19/32) Roof Sheathing (no particle board)
- Concrete Slab on Grade with Steel Reinforcement and Fibermesh Concrete
- Sentricon Termite Treatment and Control System - 1 year service included
- Concrete Block Construction with Concrete and Steel Reinforcement
- Professionally Engineered Roof Trusses with Hurricane Straps
- Concrete Based Textured Exterior Wall Finish
- Underground County/City Electrical, Water and Sewer Connections
- Underground Connection to FPL Supplied Electrical Power
- ☑ Underground Natural Gas Service Supply, Standard
- ☑ Built In Pest Control Delivery System Installed

### Exterior Features

- ☑ 12' x 24' Customizable Swimming Pool Design, Overflow protection, Swimout at Pool Entry, multi-colored LED Pool Lighting, Travertine Paver Pool Deck and covered patio and Square Edge Coping and Screen Enclosure sized per plan (see sales agent for details)
- Concrete Tile Roof System, Choice of Flat or Roll Style and Select Colors
- ☑ Impact Glass - All Windows, Sliders and Glass Doors - all openings
- Sherwin Williams Acrylic Exterior Paint on Exterior Walls of Home
- Wind Rated Garage Doors

**GHO HOMES** 772.257.1100 | ghohomes.com



Seller reserves the right to make changes or modifications to plans, maps, plan specifications, materials, features, and colors without notice. Prices are subject to change without notice. Maps, plans, landscaping and elevation renderings are artist's conceptions, are not to scale, and may not accurately depict the homes or lots as they are built. This brochure is for illustrative purposes only and not a part of a legal contract. Picture and floor plan shown above is likely not the actual home being offered, but a similar home/model.





# COMMUNITY FEATURES LIST

## Lake Sapphire

Created: Dec-22-2021

### **Fiberglass Raised-Panel 8' Front Doors with Clear Impact Glass Single Lite Sidelites - per plan**

- **Professionally Designed Landscaped Package and Floratam Sod**
- Exterior GFI Electric Outlets (2)
- Exterior Garden Hose Connections (2)
- Paver Driveway and Front Walks per Community Standard Pavers

### Utility Room and Garage

#### **White Raised Panel Foil Utility Room cabinets w/ Drop in Laundry Tub**

#### **Granite/Quartz Counter Top on Base Cabinets in Utility Room**

- **Drop Down Stairs to Attic Area**
- Garage Floor Concrete Finished Covering - Epoxy**
- Recessed Dryer Vent Box
- Recessed Washing Machine Box with Water Supply

### Gourmet Kitchens

#### **Kitchen Cabinets w/ Wood Dove Tail Drawers & Soft-close Drawers. Dove Tail & Soft Close Not Standard in Painted Cabinet Options - (GHO Level 2 Selections)**

#### **Kitchen Cabinets feature Crown Molding, Glass Doors, Light Valance and Upgraded Layout - per plan**

#### **Kitchen Island Wood Panel Wrapped - per plan**

#### **Granite or Quartz Kitchen Counter Top, with 4 inch back splash, layout per plan (GHO Level 1 Selections)**

- Kitchen Faucet: Pull Out Spray - Stainless Steel Finish
- **Stainless Steel Undermount Kitchen Sink 70/30 Split**

#### **Whirlpool Stainless Steel Finish Appliance Package**

#### **Whirlpool Refrigerator LED tap touch controls, In Door Ice**

#### **Whirlpool Wall Oven/Microwave Combination (Convection in Wall Oven Only)**

#### **Whirlpool 30" Gas Cooktop w/ EZ Lift Hinged Grates, SpeedHeat Burner, AccuSimmer Burner and Unswept SpillGuard**

#### **Whirlpool Dishwasher**

#### **36" Contemporary Stainless Steel Canopy Range Hood**

- Recessed HiHat Lighting - per plan

#### **Natural finish wood open shelving in Pantry**

**GHO HOMES** 772.257.1100 | ghohomes.com



Seller reserves the right to make changes or modifications to plans, maps, plan specifications, materials, features, and colors without notice. Prices are subject to change without notice. Maps, plans, landscaping and elevation renderings are artist's conceptions, are not to scale, and may not accurately depict the homes or lots as they are built. This brochure is for illustrative purposes only and not a part of a legal contract. Picture and floor plan shown above is likely not the actual home being offered, but a similar home/model.



# COMMUNITY FEATURES LIST

## Lake Sapphire

Created: Dec-22-2021

### Luxury Bathrooms

- ☑ **Granite or Quartz Bath Vanity Top with White Under-Mount Sink - all baths**
- ☑ **Oversized Walk-In Roman Showers - per plan**
  - **Built in Shower Seat in Master Shower, Ceramic Tile Finish - per plan**
  - **Built in Shower Soap Niche in all Showers, per plan**
  - **Clear Glass Shower Enclosures or Glass Panels - per plan**
- ☑ **Raised Height Vanities (GHO Level 2 Selections)**
- ☑ **Drop in Acrylic Master Bath Roman Tub with Wood Wrap and Granite Tub Deck Top**
  - **Enamel Steel Tub/Shower combo in Secondary Bathroom(s)**
- ☑ **Ceramic Tile Bathroom Floors with Walls and Shower Floors - Choice of Deco Packages with Listello Features in All Baths (GHO Level 3 Selections)**
  - **Elongated White Toilets in all Bathrooms**
- ☑ **Bathroom Faucets and Fixtures (Brushed Finish)**
  - **Choice of Master Bath Faucets 8" Spread**
  - **Full Width Oversized Height Vanity Mirrors**
  - **Clear Glass Windows in all Baths with Frosted Windows Option- per plan**

### Interior Appointments

- ☑ **Interior Doors Solid Core with 2 Panel Square or Arch Top Doors with Oversized Casing & Baseboard**
- ☑ **Crown Molding in Main Living Areas, Den, Dining Room & Master Bedroom (does not include Coffers)**
- ☑ **Built-In Bar Base Cabinets with Granite or Quartz Counter Top, on select plans (Match Kitchen - per plan)**
- ☑ **Porcelain Tile Flooring in Foyer, Kitchen, Halls, Great Room or Family Room & Living Room, Dining Room and Utility Room - layouts per plan (GHO Level 3 Selections)**
  - **Designer Flooring Collection - Choice of Select Oversized Ceramic Floor Tile**
  - **Wall-to-Wall Carpet in Choice of Designer Colors in all Bedrooms and Den (GHO Level 1 Selections)**

### Interior Design Features

- ☑ **Rounded Interior Wall Corners, Excluding Windows, Doors, Sliding Glass Doors, Bathrooms, Garages, Ceilings and Closets - per plan**
  - **Designer Knockdown Texture on Ceilings**
  - **Air-Conditioned Walk-In Closets - per plan**
- ☑ **Designer Two Tone Interior Paint Upgrade - Choice of Select Colors (select one) and White for Trim, Ceiling & Garage**
- ☑ **Natural finish wood open shelving in all closets, per plan**

**GHO HOMES** 772.257.1100 | ghohomes.com



Seller reserves the right to make changes or modifications to plans, maps, plan specifications, materials, features, and colors without notice. Prices are subject to change without notice. Maps, plans, landscaping and elevation renderings are artist's conceptions, are not to scale, and may not accurately depict the homes or lots as they are built. This brochure is for illustrative purposes only and not a part of a legal contract. Picture and floor plan shown above is likely not the actual home being offered, but a similar home/model.



# COMMUNITY FEATURES LIST

## Lake Sapphire

Created: Dec-22-2021

### Electrical Specifications

- Recessed HiHat Lighting in Kitchen, Halls, Covered Entry and Patio
- ☑ Under-Cabinet Lighting in Kitchen, per plan
- Ceiling Fan Pre-Wire in all Bedrooms, Den and Great Rooms and Patio
- Walk-In Closet Lighting - per plan
- Decorative Rocker Type Switches
- ☑ Phone Outlets in all Bedrooms, Kitchen and Den - CAT 5
- ☑ Pre-Wired Outlets for Cable Television in Great Room or Family Room & All Bedrooms
- ☑ AT&T U-verse Available and Supported
- Ceiling Mounted Light Fixtures in Garage, Laundry and Walk In Closets

### Energy Efficient & Safety Features

- ☑ High Efficiency Air Conditioning System - 16 SEER / Straight Cool / Sized Per Home
- HVAC AC Filter Access Located at AC Unit or in Adjacent Side-Wall for Easy Access - per plan
- ☑ Attic Spray Foam Insulation
- Energy Efficient R4.1 Concrete Block Wall Insulation
- Energy Efficient R11 Garage to House Wall Insulation
- ☑ Natural Gas Supply for Water Heater, Cook Top and Clothes Dryer
- ☑ Gas Tankless Water Heater, exterior mount - Energy Star
- ARC Fault Electrical Outlets Per Code
- Smoke and Carbon Monoxide Detectors per code
- Home Wired Security System. All Doors, 1 Keypad, 1 Motion Sensor, 1 Year Monitoring



GHO Homes sets a higher standard in appointing our homes. The features that set us apart from other builders are our Ultimate Features - denoted by the check mark icon - which come standard in each of our homes.

Additional Tailor Made home design options to choose from include built-in entertainment centers, wet bars, screened-in pools and luxurious finishes and upgrades. From flooring to cabinetry and custom room designs, we've made it easy and affordable to realize your dreams.

**GHO HOMES** 772.257.1100 | ghohomes.com



Seller reserves the right to make changes or modifications to plans, maps, plan specifications, materials, features, and colors without notice. Prices are subject to change without notice. Maps, plans, landscaping and elevation renderings are artist's conceptions, are not to scale, and may not accurately depict the homes or lots as they are built. This brochure is for illustrative purposes only and not a part of a legal contract. Picture and floor plan shown above is likely not the actual home being offered, but a similar home/model.



# COMMUNITY FEATURES LIST

## Lake Sapphire

Created: Dec-22-2021

**GHO HOMES** 772.257.1100 | [ghohomes.com](http://ghohomes.com)



Seller reserves the right to make changes or modifications to plans, maps, plan specifications, materials, features, and colors without notice. Prices are subject to change without notice. Maps, plans, landscaping and elevation renderings are artist's conceptions, are not to scale, and may not accurately depict the homes or lots as they are built. This brochure is for illustrative purposes only and not a part of a legal contract. Picture and floor plan shown above is likely not the actual home being offered, but a similar home/model.