



COMMUNITY PRICE LIST

Created: Jul-05-2016

Riverwind

Floorplans

Floorplan	Bed	Bath	Den	Garage	Sq.Ft.	Priced From
Barrington	3	3.5	Yes	2 Bay	3,086	TBD
Casa Vitoria	3	2.5	No	2 Bay	2,536	TBD
Cimarron	3	2.5	Yes	2 Bay	2,526	TBD
Kendall	3	3.5	Yes	2+ Bay	3,037	TBD

All prices above included a standard home site from GHO's Collection of Riverwind Lots.
Some Lot Premiums may apply.

All homes include GHO's Ultimate Standard Features, specific to Riverwind - see Community Features List for Specific Details.

Each home includes a swimming pool and screen enclosure.



To Learn More About These Homes Please Contact

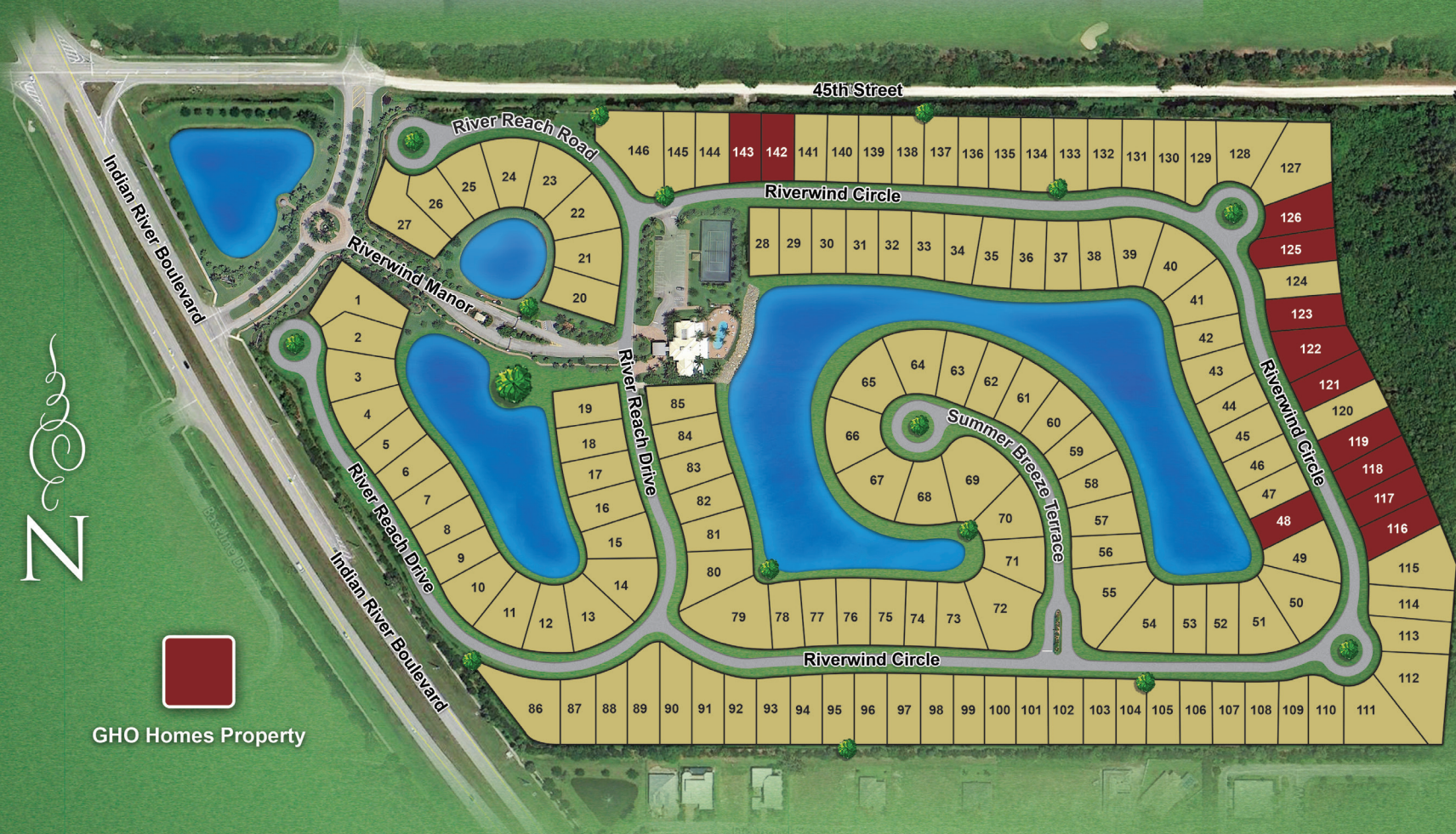
Patti Croswell 772.257.1100 Cell: 561 568 4848 pattic@ghohomes.com

GHO HOMES 772.257.1100 | ghohomes.com



Seller reserves the right to make changes or modifications to plans, maps, plan specifications, materials, features, and colors without notice. Prices are subject to change without notice. Maps, plans, landscaping and elevation renderings are artist's conceptions, are not to scale, and may not accurately depict the homes or lots as they are built. This brochure is for illustrative purposes only and not a part of a legal contract. Picture and floor plan shown above is likely not the actual home being offered, but a similar home/model.

RIVERWIND



GHO HOMES

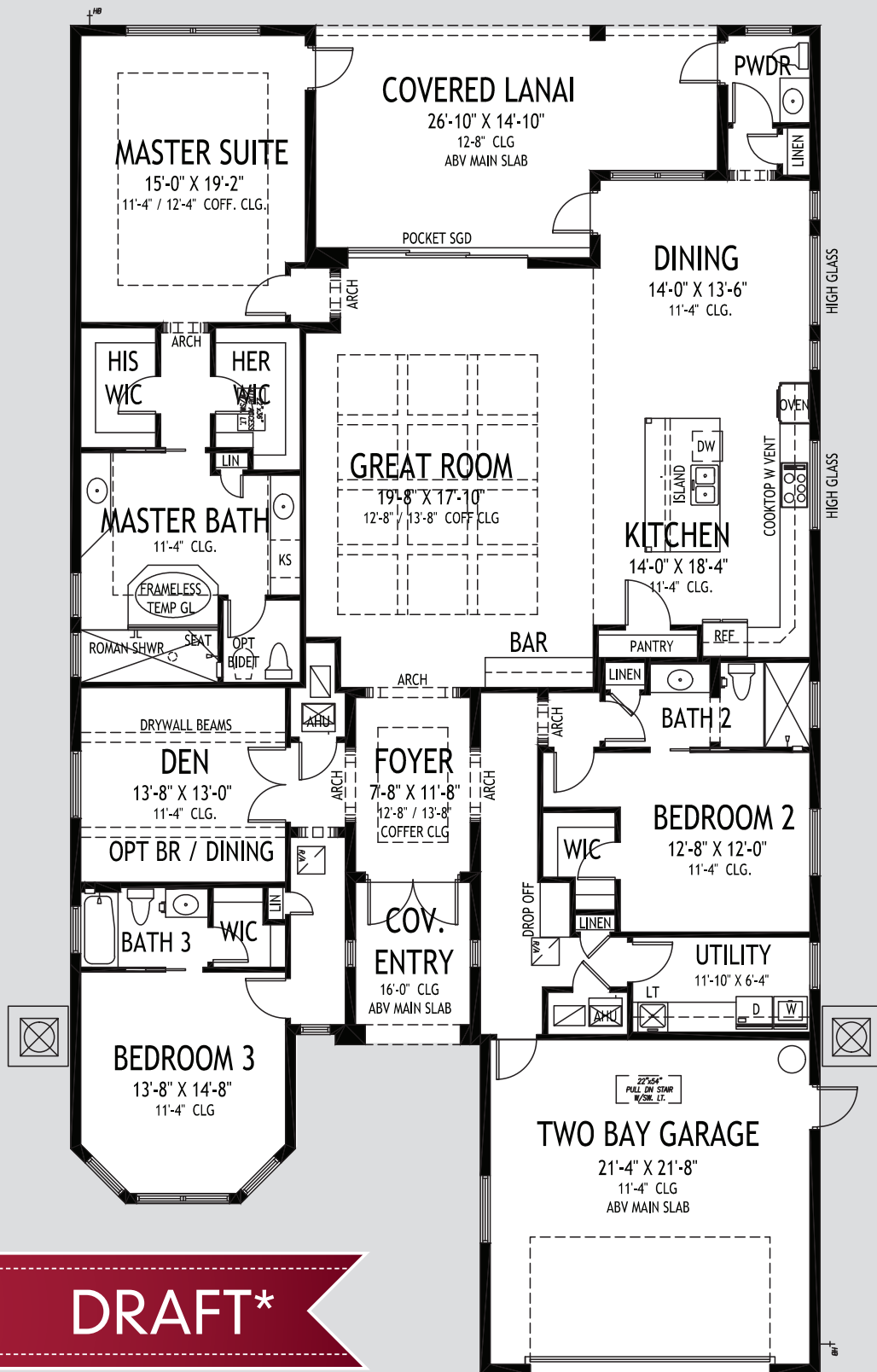
772.257.1100

| www.ghohomes.com



All Dimensions, Features, Specifications and Square Footages are approximate and subject to change without notice. Maps, plans, landscaping and elevation renderings are artist's conceptions, are not to scale, and may not accurately depict the homes or lots as they are built.

Revised June 6, 2013



DRAFT*

*Subject to change

Barrington

50' W X 90' D

GHO HOMES

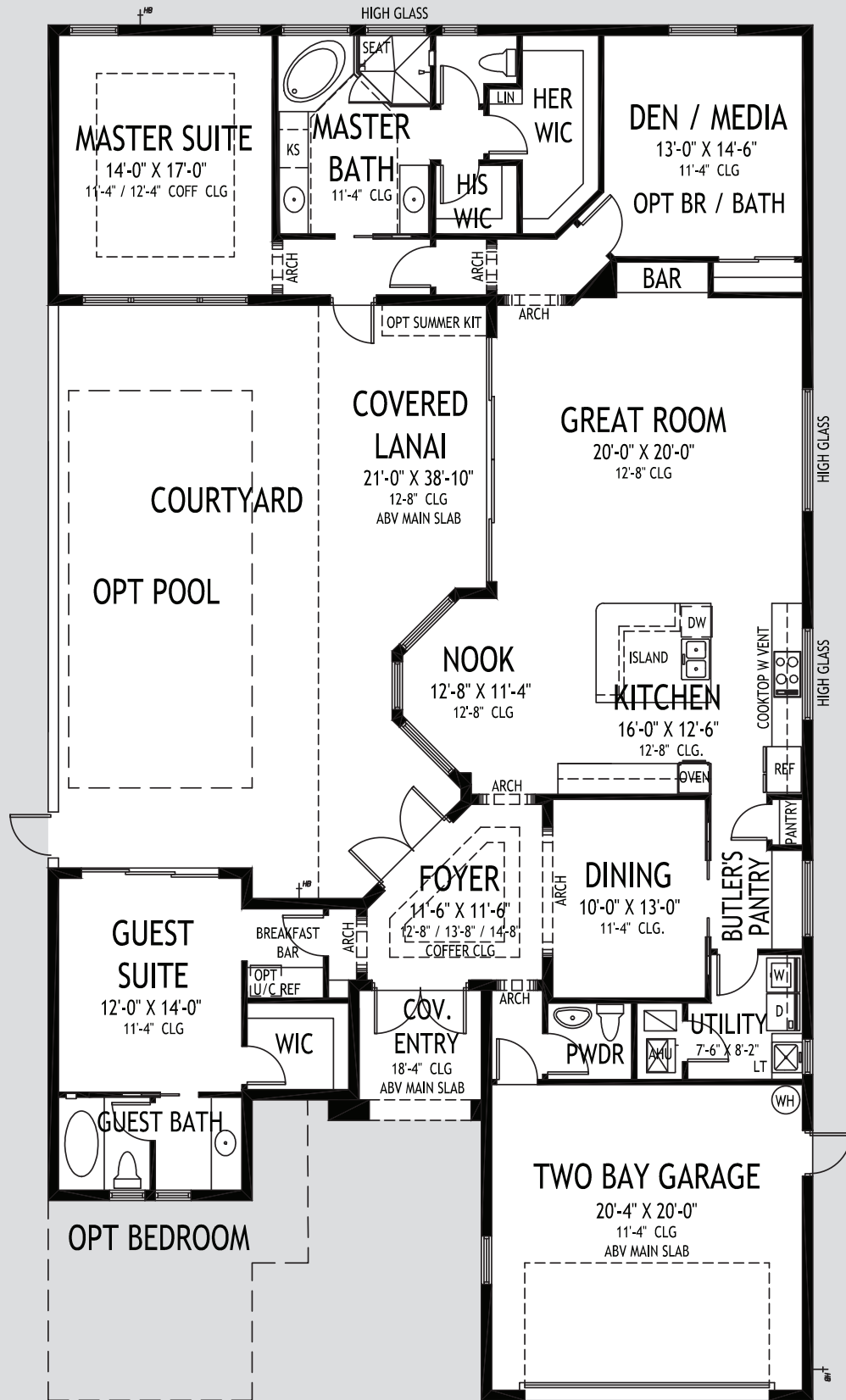
772.257.1100 | ghohomes.com

APPROXIMATE AREAS

- Air Conditioned 3,086 Sq. Ft.
- Covered Entry 84 Sq. Ft.
- Covered Patio 366 Sq. Ft.
- 2 Bay Garage 506 Sq. Ft.
- TOTAL 4,042 Sq. Ft.**



All dimensions, features, specifications and square footages are approximate and subject to change without notice. Maps, plans, landscaping and elevation renderings are artist's conceptions, are not to scale, and may not accurately depict the homes or lots as they are built.



Casa Vitoria

50'W X 90'D

DRAFT*

*Subject to change

GHO HOMES

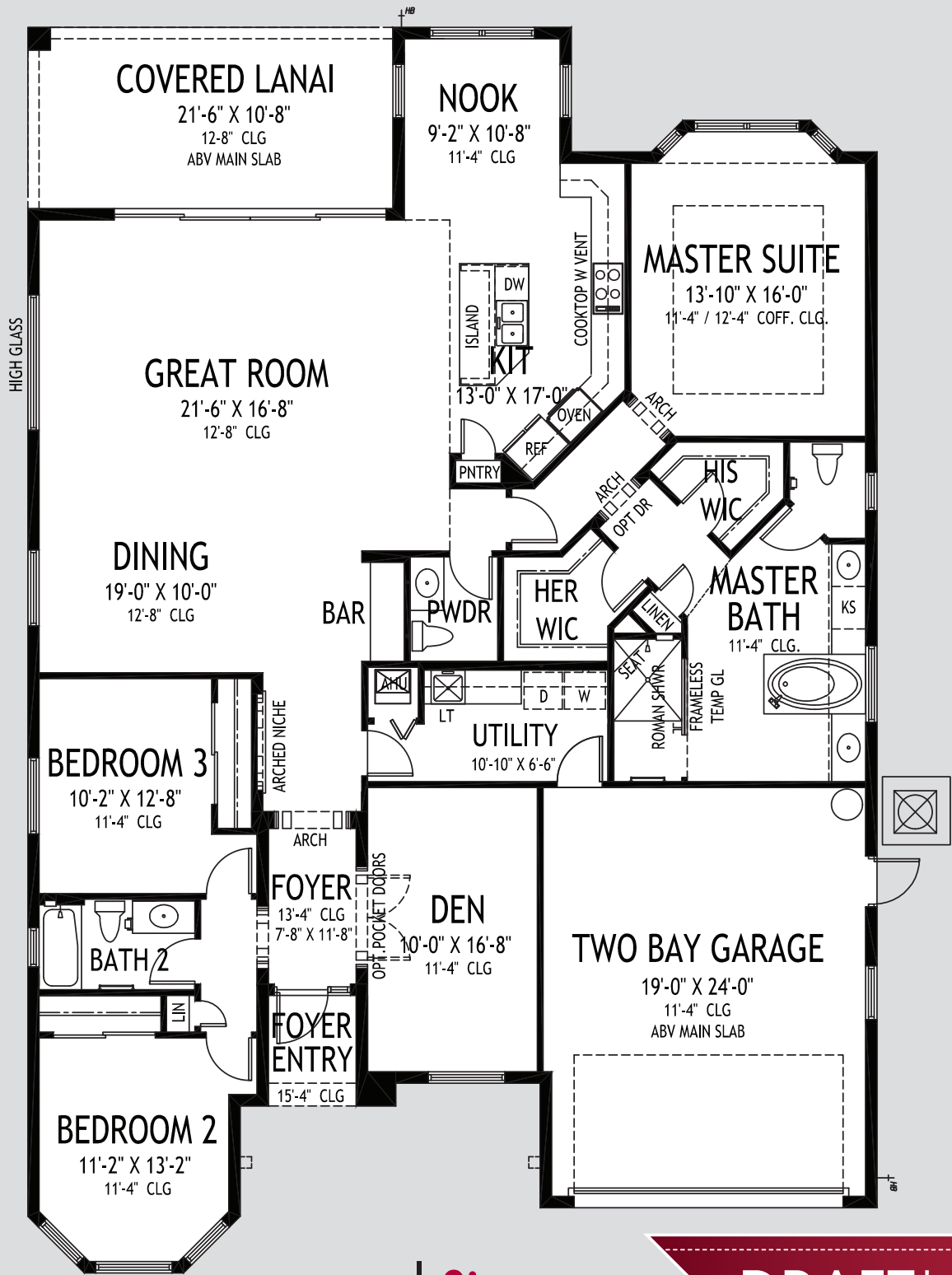
772.257.1100 | www.ghohomes.com

APPROXIMATE AREAS

Air Conditioned 2,536 Sq. Ft.
 Covered Entry 71 Sq. Ft.
 Covered Patio 331 Sq. Ft.
 2 Bay Garage 448 Sq. Ft.
TOTAL 3,386 Sq. Ft.



All Dimensions, Features, Specifications and Square Footages are approximate and subject to change without notice. Maps, plans, landscaping and elevation renderings are artist's conceptions, are not to scale, and may not accurately depict the homes or lots as they are built.



50'W X 73'4"D

Cimarron

DRAFT*

*Subject to change

GHO HOMES

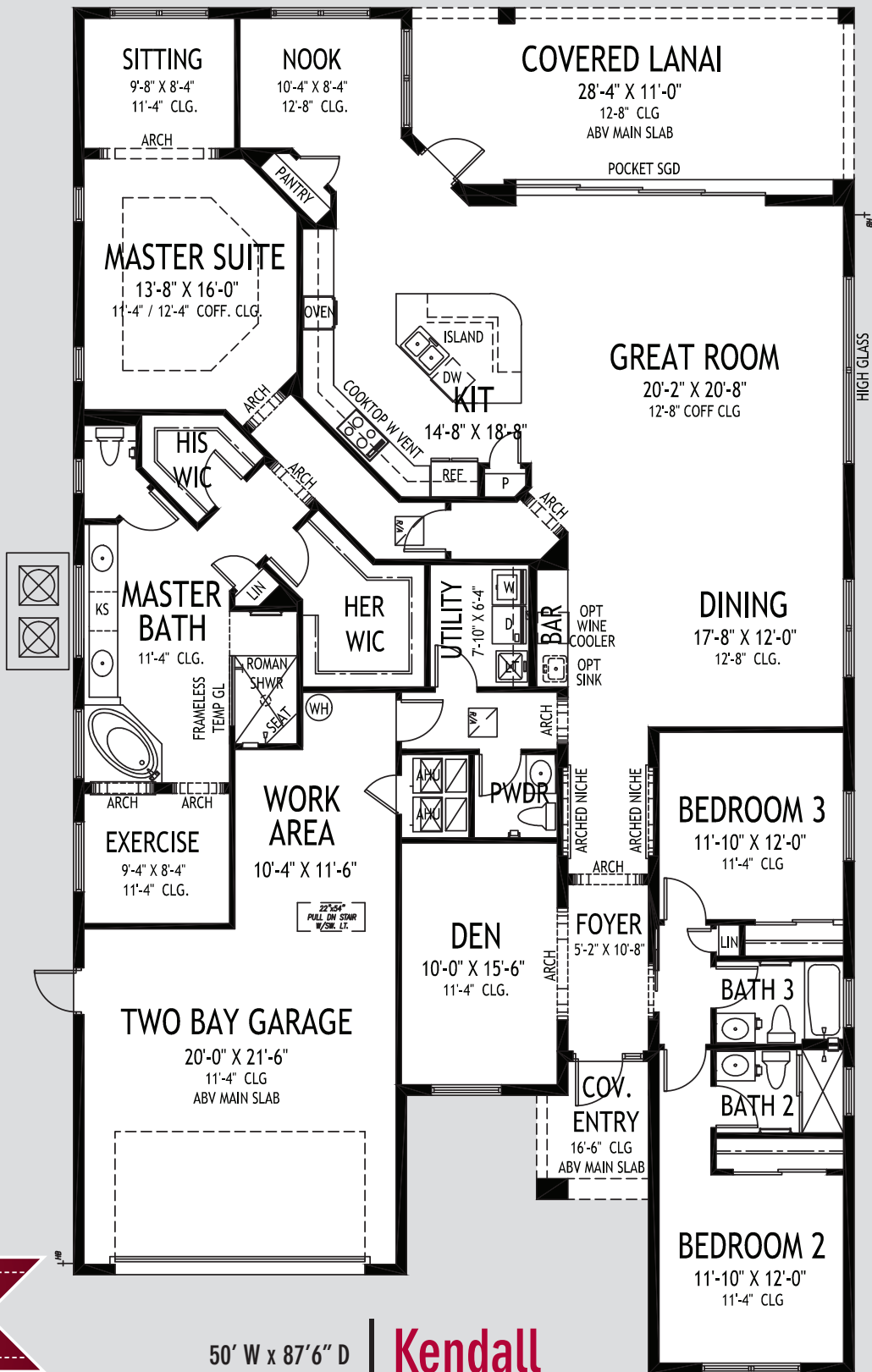
772.257.1100 | www.ghohomes.com

APPROXIMATE AREAS

- Air Conditioned 2,526 Sq. Ft.
- Covered Entry 37 Sq. Ft.
- Covered Patio 229 Sq. Ft.
- 2 Bay Garage 488 Sq. Ft.
- TOTAL 3,280 Sq. Ft.**



All Dimensions, Features, Specifications and Square Footages are approximate and subject to change without notice. Maps, plans, landscaping and elevation renderings are artist's conceptions, are not to scale, and may not accurately depict the homes or lots as they are built.



DRAFT*

50' W x 87'6" D

Kendall

*Subject to change

GHO HOMES

772.257.1100 | ghohomes.com

APPROXIMATE AREAS

Air Conditioned 3,037 Sq. Ft.
 Covered Entry 59 Sq. Ft.
 Covered Patio 308 Sq. Ft.
 2 Bay Garage 607 Sq. Ft.
TOTAL 4,011 Sq. Ft.



All dimensions, features, specifications and square footages are approximate and subject to change without notice. Maps, plans, landscaping and elevation renderings are artist's conceptions, are not to scale, and may not accurately depict the homes or lots as they are built.



COMMUNITY FEATURES LIST

Riverwind

Created: Jul-07-2016

Construction Features

- Structural Design Per Florida Current Building Codes and Design Standards
- Concrete Tile Roof System, Choice of community approved flat tile in select colors
- ☑ **Double Row Steel & Concrete Bond Beam**
- ☑ **Plywood 5/8" (19/32) Roof Sheathing (no particle board)**
- Concrete Slab on Grade with Steel Reinforcement and Fibermesh Concrete
- **Sentricon Termite Treatment and Control System - 1 year service included**
- **Concrete Block Construction with Concrete and Steel Reinforcement**
- **Professionally Engineered Roof Trusses with Hurricane Straps**
- Underground County/City Electrical, Water and Sewer Connections
- ☑ **Taexx Built In Pest Control Delivery System Installed**

Exterior Features

- ☑ **White Aluminum Frame Dual-Pane Insulated Low E Impact Resistant Glass Windows and Sliding Glass Doors (per plan)**
- **White Aluminum Single Lite Impact Resistant Glass Front Door**
- **Wind Rated Garage Doors with Remote-Controlled Openers (2 remotes)**
- Exterior Garden Hose Connections (2)
- ☑ **Swimming Pool Package - 12x26, "Salt System", Paver Deck and Screen Enclosure (design per plan)**
- **Paver Rear Patio and Pool Deck**
- Exterior GFI Electric Outlets (2)
- **Automatic Irrigation System, Master Community Water Supply**
- Paver Driveway and Front Walks per Community Standard Pavers
- ☑ **Professionally Designed Landscape Package Provided - Subject to Community Specifications**
- ☑ **Full Home Site Sodded with Floratam Sod**
- **Sherwin Williams Loxon Exterior Paint - Acrylic Primer and Top Coat**

Utility Room and Garage

- ☑ **White Raised Panel Foil Utility Room cabinets w/ Drop in Laundry Tub**
- ☑ **Granite/Quartz Counter Top on Base Cabinets in Utility Room**
- ☑ **LiftMaster 8850 Elite Series Garage Belt Drive Garage Door Opener with DC Battery Backup with Security 2.0, MyQ Technology and Timer-to-Close Feature**

- Lighting Provided for Garage and Utility Room

GHO HOMES 772.257.1100 | ghohomes.com



Seller reserves the right to make changes or modifications to plans, maps, plan specifications, materials, features, and colors without notice. Prices are subject to change without notice. Maps, plans, landscaping and elevation renderings are artist's conceptions, are not to scale, and may not accurately depict the homes or lots as they are built. This brochure is for illustrative purposes only and not a part of a legal contract. Picture and floor plan shown above is likely not the actual home being offered, but a similar home/model.



COMMUNITY FEATURES LIST

Riverwind

Created: Jul-07-2016

- Garage Floor Concrete Finished Covering - Sherwin Williams Xylene Stain
- GE Washer and Dryer

Gourmet Kitchens

- GE Profile Appliance Package, Stainless Steel
- GE Profile French Door Refrigerator
- Kitchen Faucet: Moen Arbor Pull Out Spray - Stainless Steel Finish
 - Stainless Steel Undermount Kitchen Sink 70/30 Split
- Kitchen Island Wrap - Door Panel Knee Wall with Furniture Base
- GE Profile Electric 5 Burner 36" Cooktop
- GE Dishwasher: Profile Series/ Multi-Cycle, Steam - Energy Star Rated
- GE Profile 36" Profile Stainless Steel Vented Hood Fan
- GE Profile Single Wall Oven / Microwave Combination
- Kitchen Craft Cabinets, GHO Level 3 Selection, Choice of Finishes
- Full extension soft close wood dovetail constructed drawers
- Kitchen cabinet design to included crown molding, light valance, staggered height cabinets, refrigerator side panel and glass cabinet doors - designed per plan
- Kitchen convenience package featuring, trash pull out, pull out shelves

Luxury Bathrooms

- Oversized Walk-In Roman Showers - per plan
- Built in Shower Seat in Master Shower, Ceramic Tile Finish - per plan
- Built in Shower Soap Niche in all Showers
 - Clear Glass Shower Enclosures or Glass Panels - per plan
- Bath Vanity Cabinets - Kitchen Craft Cabinets, GHO Level 3 Selection, Choice of Finishes
- Granite Vanity Tops in all bathrooms with white under-mount sinks (GHO Level 1)
 - Full Width Oversized Height Vanity Mirrors
- Master Showers to Include Dual Control Valve with Wall and Rain Heads
- Moen Brushed Nickel Bathroom Faucets and Fixtures in all baths (choice of styles)
 - Sterling Vikrell® Tub/Shower Combo in Secondary Bathroom(s)
- Ceramic Deco Tile Packages in all Bathrooms, including Designer Listello Selections (GHO Level 3)
 - Elongated White Toilets in all Bathrooms
- Master Bath Tub Panel Deck with Flat Panels and Furniture Base (per plan)

GHO HOMES 772.257.1100 | ghohomes.com



Seller reserves the right to make changes or modifications to plans, maps, plan specifications, materials, features, and colors without notice. Prices are subject to change without notice. Maps, plans, landscaping and elevation renderings are artist's conceptions, are not to scale, and may not accurately depict the homes or lots as they are built. This brochure is for illustrative purposes only and not a part of a legal contract. Picture and floor plan shown above is likely not the actual home being offered, but a similar home/model.



COMMUNITY FEATURES LIST

Riverwind

Created: Jul-07-2016

Granite Tub Deck Top and Splash on Master Bath Roman Tub (per plan)

- Clear Glass Windows in all Bath with Frosted Windows Option

GHO Upgraded Bath Light Fixtures - Level 2 or equal (all baths)

Interior Appointments

Raised Panel, Solid Core, 8' Interior Doors with Oversized Door Casing and Baseboard

Interior Design Features

- Flex Plan Design -- offering many possible options for your lifestyle

Rounded Interior Wall Corners, Excluding Windows, Doors, Sliding Glass Doors, and Closets - per plan

- Designer Knockdown Texture on Ceilings
- Air-Conditioned Walk-In Closets - per plan

- Designer Arches, Niches and Pot Shelves - per plan

Tile Flooring, featuring Porcelain Tile Selections - GHO Level 3

- Upgraded Carpet Selections & Upgraded Padding in Bedrooms, Study, Exercise Rooms, etc. - GHO Level 3

Crown Molding Throughout Living Areas, Den and Master Bedrooms (excluding guest beds, baths, utility room and closets) - perimeter of room only/ layout per plan

Travertine Marble Windowsills

- Sherwin Williams Interior Paint - Flat Latex Walls and Ceiling
- Sherwin Williams Interior Trim Paint - Promar 200 Semi-Gloss Latex

Interior Paint Custom Designer Multi Color Package (3 color / built to order homes)

Natural finish wood open shelving in all closets, per plan

Electrical Specifications

- Recessed HiHat Lighting in Kitchen, Halls, Covered Entry and Patio

Under-Cabinet Lighting in Kitchen, per plan

- Ceiling Fan Pre-Wire in all Bedrooms, Den and Great Rooms and Patio
- Walk-In Closet Lighting - per plan
- Decorative Rocker Type Switches

Phone Outlets in all Bedrooms, Kitchen and Den - CAT 5

Cable Outlets in all bedrooms, great room and den - RG6

- Recessed HiHat Lighting in Great Room
- Great Room Flat Screen TV PreWire

GHO HOMES 772.257.1100 | ghohomes.com



Seller reserves the right to make changes or modifications to plans, maps, plan specifications, materials, features, and colors without notice. Prices are subject to change without notice. Maps, plans, landscaping and elevation renderings are artist's conceptions, are not to scale, and may not accurately depict the homes or lots as they are built. This brochure is for illustrative purposes only and not a part of a legal contract. Picture and floor plan shown above is likely not the actual home being offered, but a similar home/model.



COMMUNITY FEATURES LIST

Riverwind

Created: Jul-07-2016

- ✔ USB Charging Outlet in kitchen or drop zone - per plan
- ✔ Floor Outlet in Great Room
 - Pre-Wired for Hanging Lights over Kitchen Island (fixtures not included)
- ✔ Great Room 5.1 Surround Sound Package including speakers
- ✔ Network Data Pack: (4) cat6 drops with onQ panel
- ✔ Ceiling mounted patio speakers - wired to home location

Energy Efficient & Safety Features

- ✔ High Efficiency Air Conditioning System - Rheem 16 SEER / Straight Cool / Sized Per Home
- ✔ HVAC AC Filter Access Located at AC Unit or in Adjacent Side-Wall for Easy Access - per plan
- ✔ NEST Next Generation Learning Thermostat
- ✔ Attic Spray Foam Insulation, with ignition barrier.
 - Energy Efficient R4.1 Concrete Block Wall Insulation
 - Energy Efficient R11 Garage to House Wall Insulation
- ✔ Dual Pane Low E Coated Glass on Windows / Sliding Glass Doors
 - Quick Recovery Electric Water Heater - 80 Gallon
 - ARC Fault Electrical Outlets Per Code
- ✔ Hot Water Recirculation System
 - Smoke and Carbon Monoxide Detectors per code
- ✔ Security System - Full Perimeter Alarm Pre-Wire, with 3 key pad locations - service optional
- ✔ Security Camera Pre-Wires - 2 included



GHO Homes sets a higher standard in appointing our homes. The features that set us apart from other builders are our Ultimate Features - denoted by the check mark icon - which come standard in each of our homes.

Additional Tailor Made home design options to choose from include built-in entertainment centers, wet bars, screened-in pools and luxurious finishes and upgrades. From flooring to cabinetry and custom room designs, we've made it easy and affordable to realize your dreams.

GHO HOMES 772.257.1100 | ghohomes.com



Seller reserves the right to make changes or modifications to plans, maps, plan specifications, materials, features, and colors without notice. Prices are subject to change without notice. Maps, plans, landscaping and elevation renderings are artist's conceptions, are not to scale, and may not accurately depict the homes or lots as they are built. This brochure is for illustrative purposes only and not a part of a legal contract. Picture and floor plan shown above is likely not the actual home being offered, but a similar home/model.