

**GHO HOMES**

A GREEN BRICK PARTNER

**BELTERRA**

PORT ST LUCIE, FL 34987 | LOT 69

**ARGUS****14196 SW PINNACLE****CT**

Move-in date: July 2026

**Jennifer Smith**

P: 772.257.1100

C: 561.329.8863

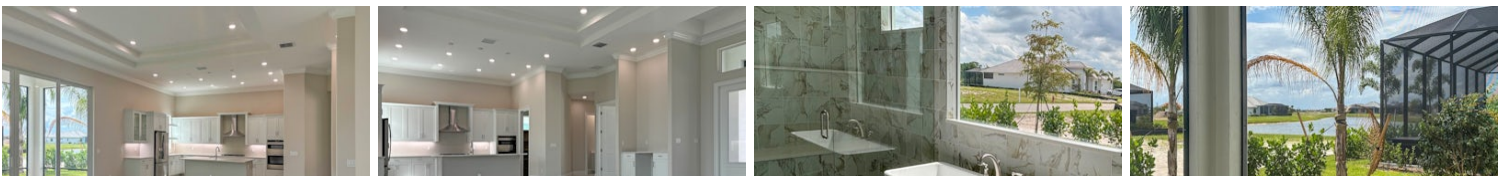
JenniferS@ghohomes.com



Bed:3 • Bath: 3.5 • Living SF: 2,658 • Total SF: 4,102

**Open House: 06/21/2026 12:00 PM - 4:00 PM****Now: \$934,500**

This is not a typical home. The Argus floorplan makes history as the first Belterra courtyard home featuring both a private casita and an auto-locking gatehouse, offering a level of exclusivity and design sophistication. With 3 bedrooms, den, 3.5 baths and a 3-car tandem garage encompassed in 2,658 square feet of living space and 4,102 total square feet across the entire property, every inch of this home has been thoughtfully crafted for those who expect more from where they live. Arrival sets the tone immediately. The auto-locking gatehouse opens to a stunning private courtyard where a resort-style pool takes center stage, complete with four deck jets, a screen enclosure and a travertine tile pool deck. Whether you are entertaining guests on a warm evening or simply unwinding after a long day, this outdoor sanctuary delivers the kind of daily luxury that feel like you are on vacation. Step inside and the great room commands attention with its soaring coffered ceilings and oversized sliding doors that draw natural light deep into the space from both the front and rear of the home. A stylish built-in bar with a beverage center adds both function and personality, making this the natural gathering place. Porcelain tile flooring flows seamlessly throughout the entire home, offering a clean, sophisticated foundation that ties every room together. The kitchen is built for those who cook and entertain in equal measure. GE Profile appliances anchor the space, complemented by under-cabinet lighting that adds warmth and precision and a large walk-in pantry that keeps everything organized and within reach. An adjacent dining area connects effortlessly to a versatile den, giving the home a layout that adapts as easily to quiet mornings as it does to lively dinner parties. The master suite is a private sanctuary in every sense. Situated off the great room with direct access to the courtyard, it features two walk-in closets, dual vanities, a walk-in shower and a freestanding soaking tub that elevates the daily routine into something worth looking forward to. The secondary bedr[...]

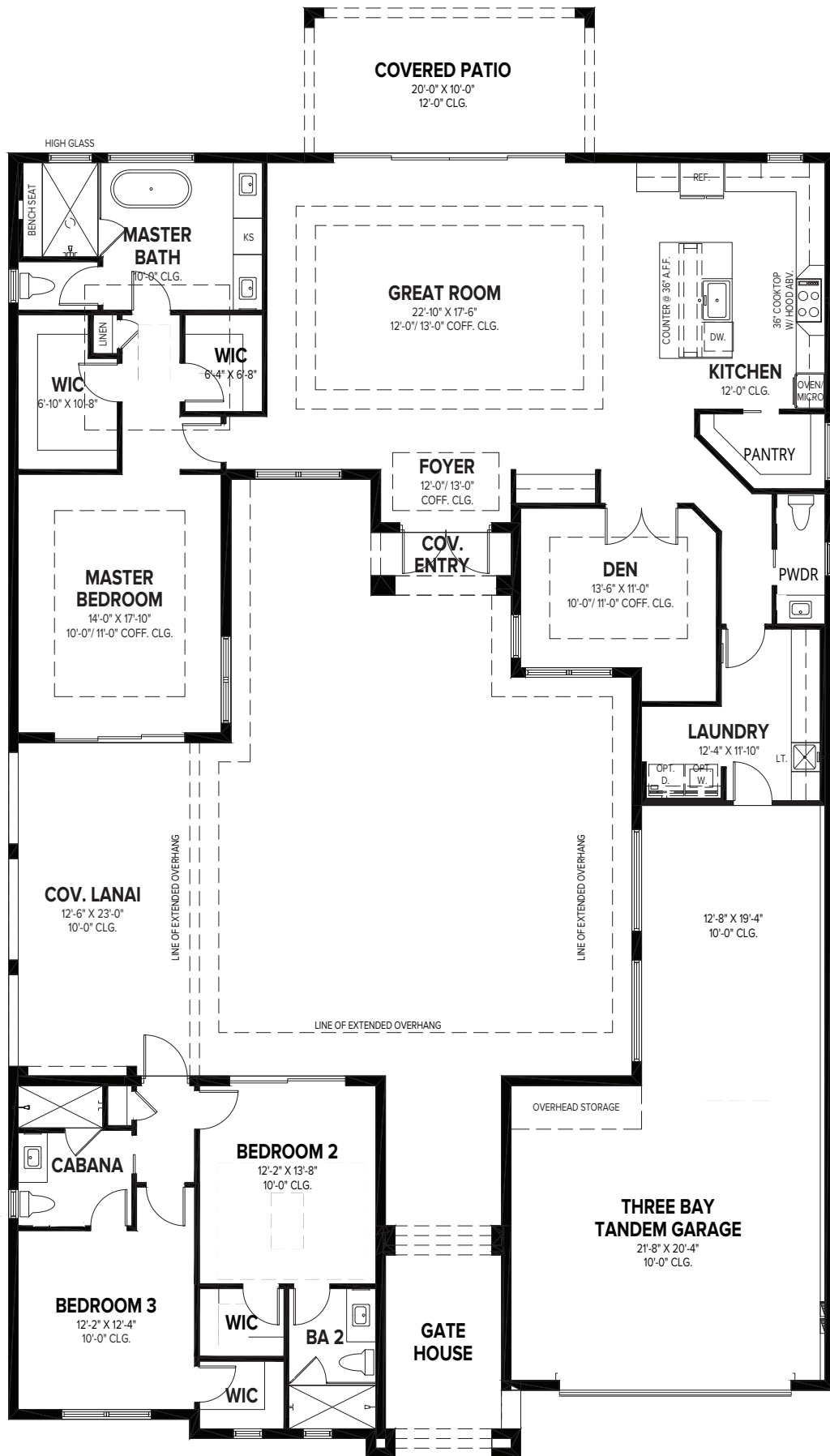


Seller reserves the right to make changes or modifications to plans, maps, plan specifications, materials, Features, and colors without notice. Prices are subject to change without notice. Maps, plans, landscaping and elevation renderings are artist's conceptions, not to scale, and may not accurately depict the homes or lots as they are built. This brochure is for illustrative purposes only and not a part of a legal contract. Lic. #CBC051145

# GHO HOMES | BELTERRA



Seller reserves the right to make changes or modifications to plans, maps, plan specifications, materials, Features, and colors without notice. Prices are subject to change without notice. Maps, plans, landscaping and elevation renderings are artist's conceptions, not to scale, and may not accurately depict the homes or lots as they are built. This brochure is for illustrative purposes only and not a part of a legal contract. Lic. #CBC051145



# ARGUS

3 BEDS • 3.5 BA • 3 BAY GARAGE • 57' x 100' • 4,102 SF  
 A/C: 2,658 sf • gatehouse: 136 sf • entry: 45 sf • gate house: 136 sf  
 covered patio: 503 sf • garage: 760 sf



772.257.1100 • GHOHOMES.COM

All dimensions, features, specifications and square footages are approximate and subject to change without notice. Maps, plans, landscaping and elevation renderings are artist's conceptions, are not to scale, and may not accurately depict the homes or lots as they are built. © GHO Homes 2026. Revised March 25, 2026.

