

**GHO HOMES**

A GREEN BRICK PARTNER

**LUCAYA POINTE**  
VERO BEACH, FL 32967 | LOT 40**SEABREEZE****1910 ARAWAK STREET,  
VERO BEACH, FLORIDA  
32967**

Move-in date: Move-In Ready

**Diana Leever**

P: 772.257.1100

C: 772.828.7074

dianal@ghohomes.com



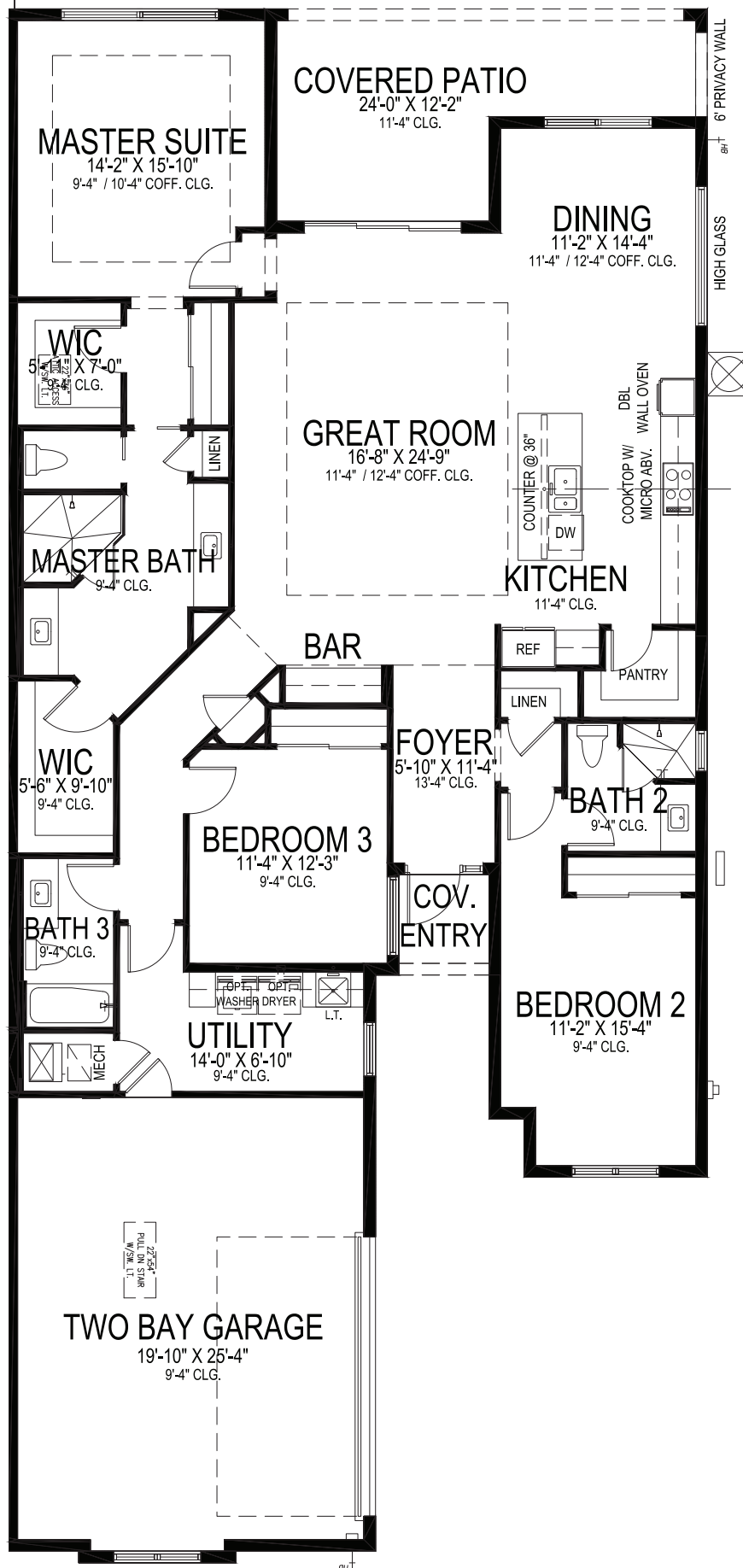
Bed:3 • Bath: 3 • Living SF: 2,244 • Total SF: 0

**Now: \$778,715**

Discover the opportunity to own a beautiful Seabreeze Villa Home! This thoughtfully designed residence offers 3 spacious bedrooms and 3 full baths, blending comfort with modern elegance. Enjoy a chef-inspired kitchen featuring premium KitchenAid appliances and a 36" natural gas cook-top & vented hood - ideal for those who appreciate both performance and efficiency, plus quartz countertops, and large walk-in pantry with wooden shelves. The open-concept layout is complemented by tile flooring throughout, creating a seamless, low-maintenance living space with a clean, contemporary feel. Solid core interior doors and crown molding, add an extra level of quality and quiet sophistication, while the overall design emphasizes both functionality and style. With construction underway, now is the perfect time to get in early and make this villa your own. There are also coffer ceilings in the great room & master bedroom. The oversized garage has an epoxy floor. This home offers a private salt chlorination pool with waterfall and so much more! Don't miss the chance to secure a brand-new home in progress where quality finishes and smart design come together beautifully. Stop by today!



Seller reserves the right to make changes or modifications to plans, maps, plan specifications, materials, Features, and colors without notice. Prices are subject to change without notice. Maps, plans, landscaping and elevation renderings are artist's conceptions, not to scale, and may not accurately depict the homes or lots as they are built. This brochure is for illustrative purposes only and not a part of a legal contract. Lic. #CBC051145



## SEABREEZE

3 BEDS • 3 BATHS • 2 BAY GARAGE • 40' x 89' • 3,051 SF  
 A/C: 2,244 sf • covered entry: 30 sf • covered patio: 225 sf • garage: 552 sf

# GHO HOMES

A GREEN BRICK PARTNER

772.257.1100 • GHOHOMES.COM

All dimensions, features, specifications and square footages are approximate and subject to change without notice. Maps, plans, landscaping and elevation renderings are artist's conceptions, are not to scale, and may not accurately depict the homes or lots as they are built. © GHO Homes 2021. Revised September 7, 2022.

