

GHO HOMES

A GREEN BRICK PARTNER

THE FALLS AT GRAND HARBOR
VERO BEACH, FL 32967 | LOT 52**BEACON GRANDE****2145 FALLS CIRCLE**

Move-in date: September 2026

Vince Watkins

P: 772.530.9689

C: 772.530.9689

VWatkins@ghohomes.com



Bed:4 • Bath: 2.5 • Living SF: 2,524 • Total SF: 3,385

Now: \$932,616

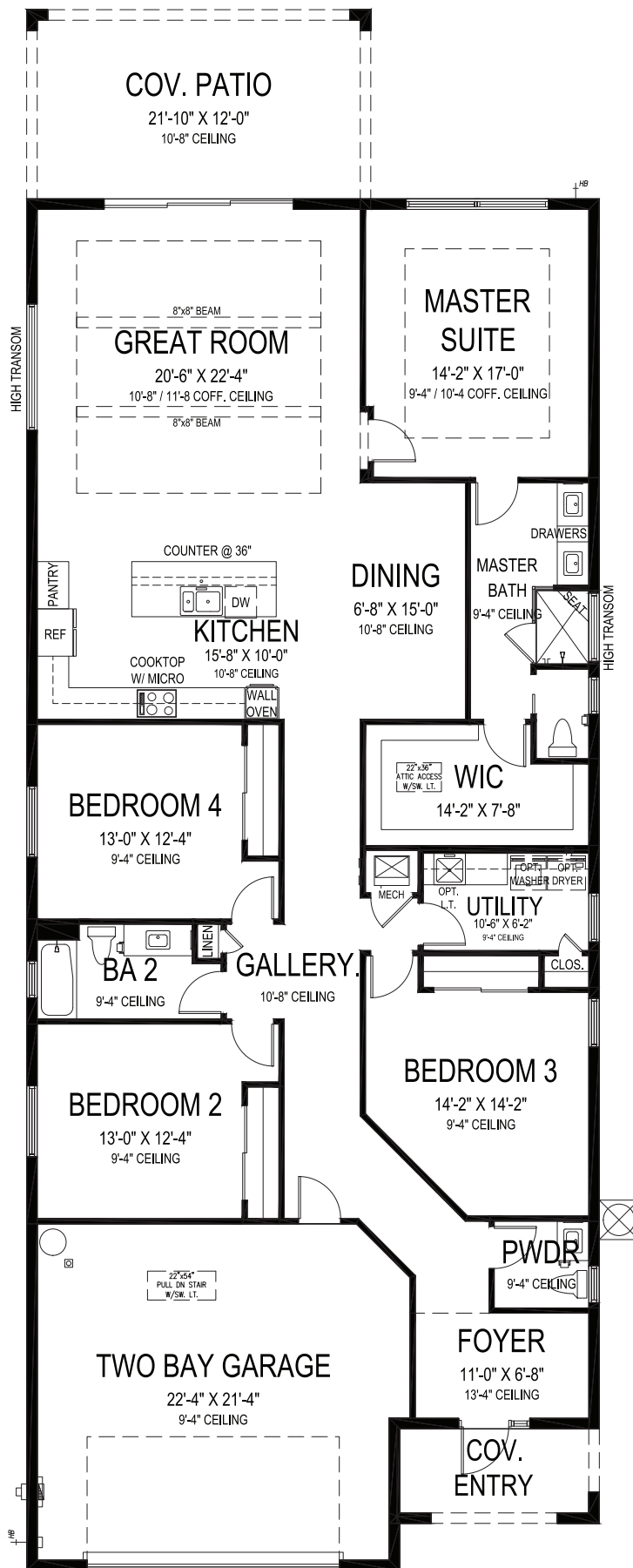
Experience elevated luxury in this beautifully designed Beacon Grande home located within the prestigious gated community of The Falls at Grand Harbor. This home showcases an extensive list of premium upgrades and designer selections, paired with exceptional Grand Harbor lifestyle and included Sport Membership.

Designed with a sophisticated modern coastal aesthetic, this 4 bed, 2.5 bath home features large tile flooring throughout, quartz countertops in the kitchen, baths, and laundry, plus a dramatic full quartz backsplash and upgraded waterfall island. The gourmet kitchen is appointed with premium KitchenAid appliance package, upgraded cabinetry with glass accents, pull-out shelving, and custom organization features. Additional luxury finishes include matte black plumbing fixtures and hardware, tile-to-ceiling lighting packages, French doors to bedroom 3/den, and an electronic front door deadbolt. The garage offers a finished epoxy floor, while the exterior is enhanced with an upgraded elevation package and upgraded flat concrete roof tile selection.

Every detail of this home has been carefully curated to create a refined yet comfortable living environment within one of Vero Beach's premier lifestyle communities. Residents enjoy access to Grand Harbor's world-class amenities, club lifestyle, golf, dining, and waterfront dining opportunities.



Seller reserves the right to make changes or modifications to plans, maps, plan specifications, materials, Features, and colors without notice. Prices are subject to change without notice. Maps, plans, landscaping and elevation renderings are artist's conceptions, not to scale, and may not accurately depict the homes or lots as they are built. This brochure is for illustrative purposes only and not a part of a legal contract. Lic. #CBC051145



BEACON GRANDE

4 BEDS • 2.5 BATHS • 2 BAY GARAGE • 36'-4" x 99' • 3,385 SF
 A/C: 2,524 sf • covered entry: 76 sf • covered patio: 262 sf • garage: 523 sf

GHO HOMES

A GREEN BRICK PARTNER

772.257.1100 • GHOHOMES.COM

All dimensions, features, specifications and square footages are approximate and subject to change without notice. Maps, plans, landscaping and elevation renderings are artist's conceptions, are not to scale, and may not accurately depict the homes or lots as they are built. © GHO Homes 2022. Revised May 18, 2022.

