

GHO HOMES

A GREEN BRICK PARTNER

THE RESERVE AT GRAND HARBOR
VERO BEACH, FL 32967**BRIDGEWATER****2263 GRAND HARBOR
RESERVE SQUARE**

Move-in date: November 2026

Lisa Krynski

P: 772.257.1100

C: 772.521.0954

lisak@ghohomes.com



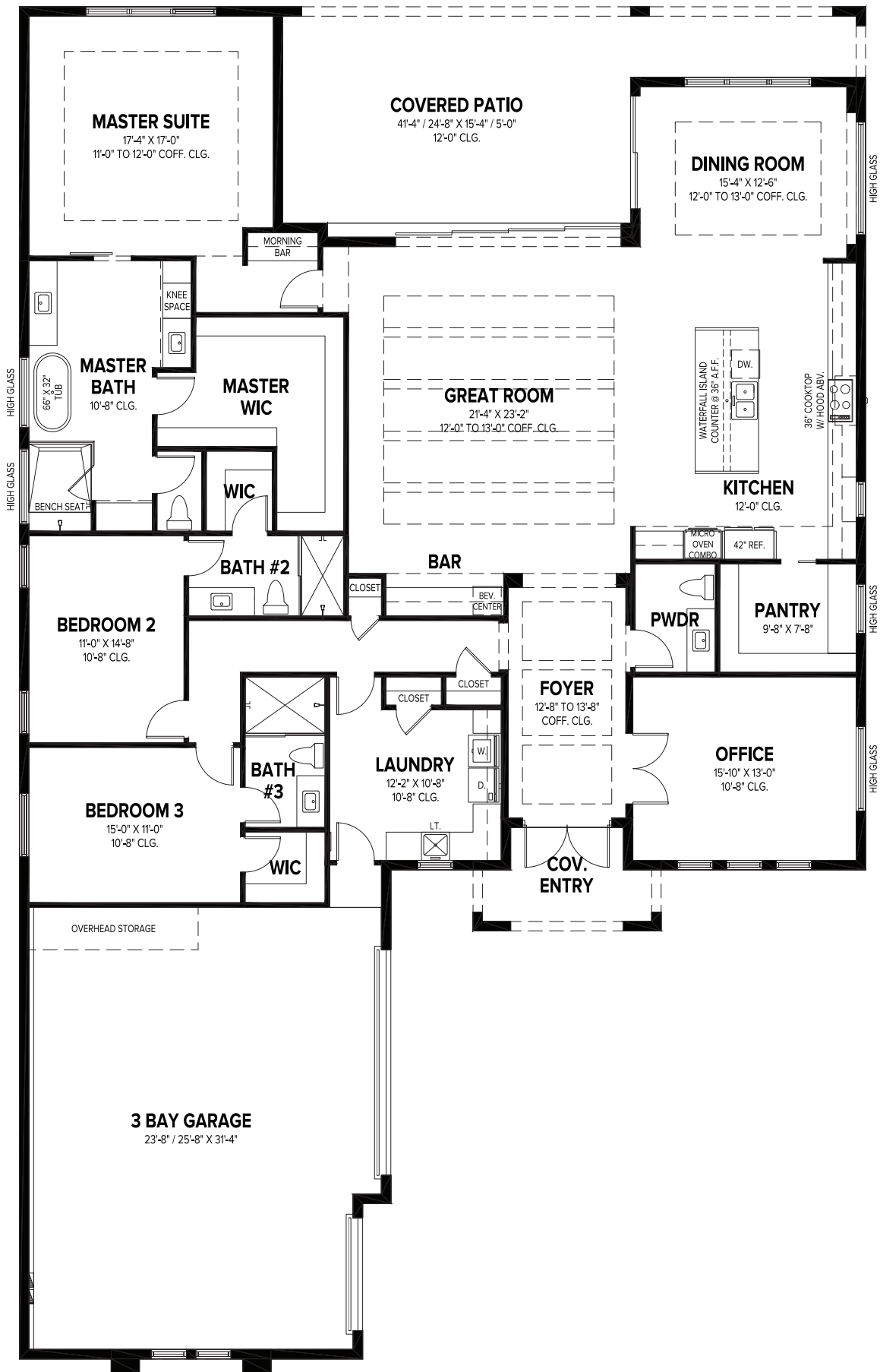
Bed:3 • Bath: 3.5 • Living SF: 3,151 • Total SF: 4,624

Now: \$2,064,000

This home is currently under construction and is scheduled for completion in November/December 2026. Our newest Reserve Plan, The Bridgewater, is being built on a preserve lot and offers exceptional design and features. It includes 3 bedrooms, 3.5 baths, and a den. The gourmet kitchen is thoughtfully designed with attention to detail, featuring tuxedo-style two-tone stacked cabinets with soft-close drawers, a walk-in pantry with custom shelving, and high-end Café appliances, including a 36" gas cooktop with a cabinet-faced vented hood. The centerpiece of the kitchen is a beautifully crafted waterfall-edge center island. The great room is enhanced by a coffered ceiling, a bar area with a beverage refrigerator, and an electric linear fireplace with a full-height tiled bump-out. The master bathroom boasts quartz countertops and LED lighted mirrors, along with a spacious built-out walk-in closet. The outdoor space at the back of the home is perfect for entertaining, featuring a fully screened pool and patio area complete with a water feature and a sun shelf. Located in Grand Harbor, Vero Beach's premier private golf and beach club, this home offers an exclusive lifestyle and a strong sense of community for those seeking the very best.



Seller reserves the right to make changes or modifications to plans, maps, plan specifications, materials, Features, and colors without notice. Prices are subject to change without notice. Maps, plans, landscaping and elevation renderings are artist's conceptions, not to scale, and may not accurately depict the homes or lots as they are built. This brochure is for illustrative purposes only and not a part of a legal contract. Lic. #CBC051145



GHO HOMES

A GREEN BRICK PARTNER

BRIDGEWATER

3 BEDS • 3.5 BATHS • DEN • 3 BAY GARAGE • 60' x 96'-10" • 4,624 SF
 A/C: 3,242 sf • covered entry: 82 sf • covered patio: 462 sf • garage: 838 sf

All dimensions, features, specifications and square footages are approximate and subject to change without notice. Maps, plans, landscaping and elevation renderings are artist's conceptions, are not to scale, and may not accurately depict the homes or lots as they are built. © GHO Homes 2025. Revised November 3, 2025.



CR003148

772.257.1100 • GHOHOMES.COM