

GHO HOMES

A GREEN BRICK PARTNER

2275 GRAND HARBOR RESERVE SQUARE

VERO BEACH, FL 32967 | LOT 32

**THE RESERVE AT GRAND HARBOR | SOMERSET**

Bed: 3 • Bath: 3.5 • Living SF: 3,083 • Total SF: 4,551

Move-in date: Move-In Ready

Open House: 05/31/2025 12:00 PM - 3:00 PM | \$1,868,069**CONTACT****Catherine Garofalo**

P: 772.257.1100

C: 772.342.0061

catg@ghohomes.com

This move-in ready Somerset home features 3 bedrooms, 3.5 bath, den and a 3-car side load garage. The gourmet kitchen is thoughtfully designed with attention to detail boasting stacked cabinets with soft-closing mechanisms, glass doors with shelving and puck lighting, Café appliances, a 36" gas cooktop and a waterfall quartz countertop with mitered corners. The great room is accented with a coffered ceiling, as well as bar area. All baths are complete with quartz countertops and the master bath offers LED lighted vanity mirrors. The home includes PGT oversized impact glass on all doors and windows, a flat concrete tile roof, soaring ceilings up to 13 feet, and customized natural wood shelving in the pantry and closets, plus a screened saltwater pool. The 3-car garage is equipped with a 50-amp circuit for future electric car charging station. Visit or schedule a tour today with Cathy Garofalo at 772-342-0061.



Seller reserves the right to make changes or modifications to plans, maps, plan specifications, materials, Features, and colors without notice. Prices are subject to change without notice. Maps, plans, landscaping and elevation renderings are artist's conceptions, not to scale, and may not accurately depict the homes or lots as they are built. This brochure is for illustrative purposes only and not a part of a legal contract. Lic. #CBC051145

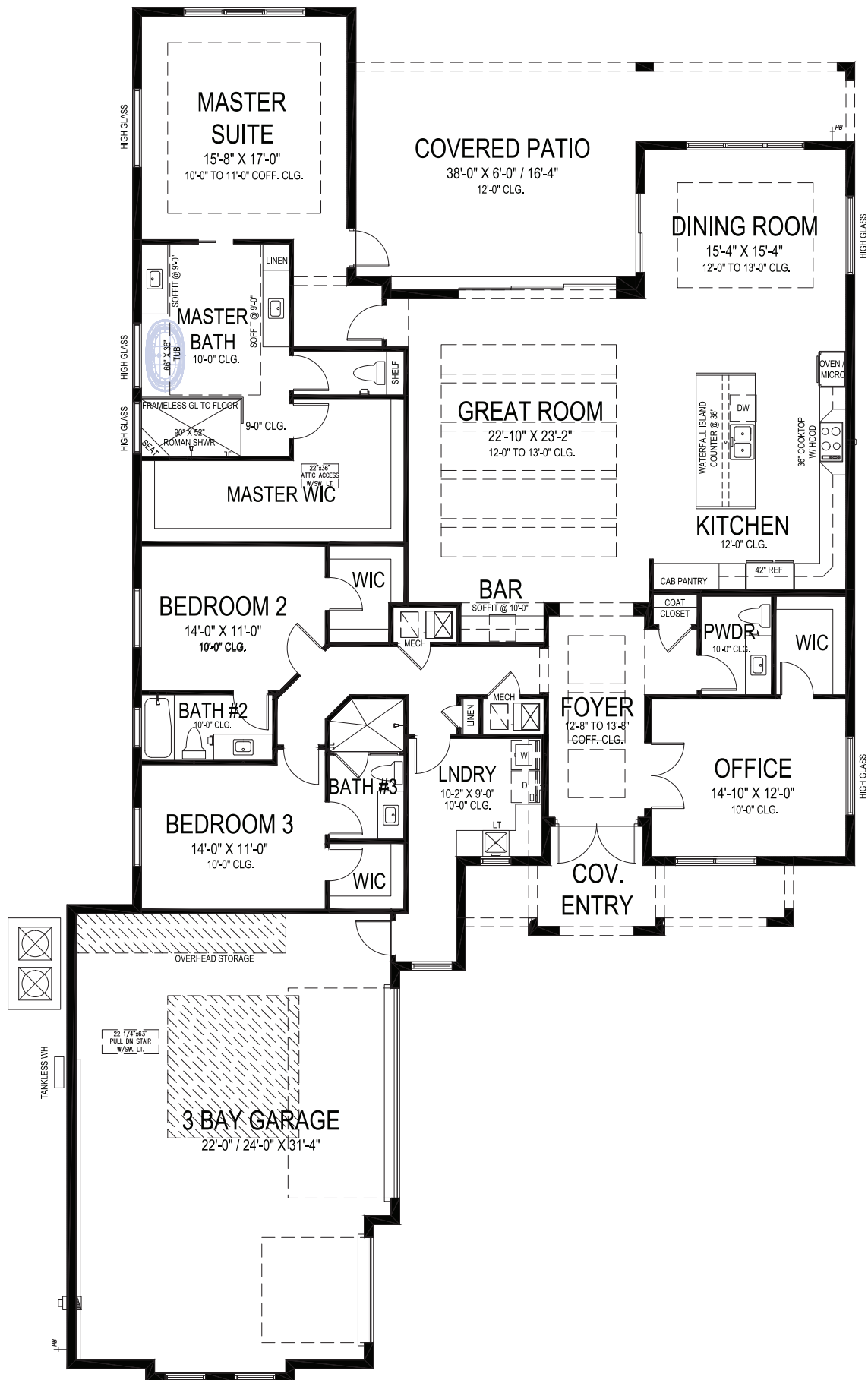


2275 GRAND HARBOR RESERVE SQUARE
VERO BEACH, FL 32967 | LOT 32

772.257.1100 | GHOHOMES.COM



Seller reserves the right to make changes or modifications to plans, maps, plan specifications, materials, Features, and colors without notice. Prices are subject to change without notice. Maps, plans, landscaping and elevation renderings are artist's conceptions, not to scale, and may not accurately depict the homes or lots as they are built. This brochure is for illustrative purposes only and not a part of a legal contract. Lic. #CBC051145



GHO HOMES

A GREEN BRICK PARTNER

SOMERSET

3 BEDS • DEN • 3.5 BATHS • 3 BAY GARAGE • 60' x 104'-8" • 4,544 SF
 A/C: 3,083 sf • covered entry: 145 sf • covered patio: 448 sf • garage: 868 sf

772.257.1100 • GHOHOMES.COM

All dimensions, features, specifications and square footages are approximate and subject to change without notice. Maps, plans, landscaping and elevation renderings are artist's conceptions, are not to scale, and may not accurately depict the homes or lots as they are built. © GHO Homes 2023. Revised September 20, 2023.

