

GHO HOMES

A GREEN BRICK PARTNER

HIGH POINTE

VERO BEACH, FL 32967 | LOT 129



CORDELLA JEM

4066 TOWER POINTE WAY

Move-in date: October 2026

Nicole Morris

P: 772.257.1100

C: 772.882.8990

nicolem@ghohomes.com



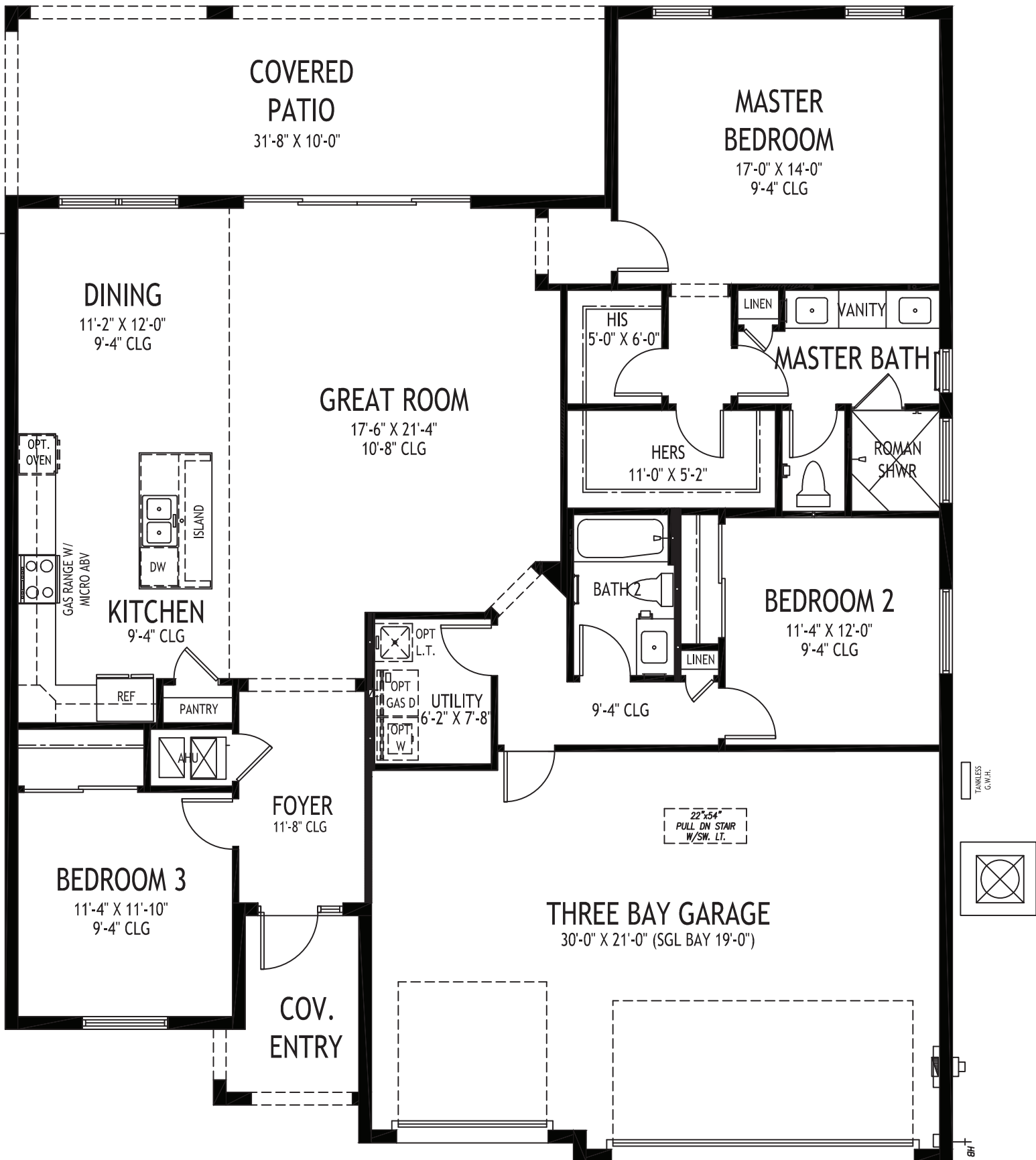
Bed:3 • Bath: 2 • Living SF: 1,899 • Total SF: 2,939

Now: \$580,580

The Cordella Jem offers over 1,899 square feet of luxurious living space. This beautifully designed home features 3 spacious bedrooms, 2 bathrooms, and a 3-car garage that provides abundant storage. From the moment you enter, a striking coffered ceiling in the foyer sets an elegant tone. Premium wood-look tile flooring flows seamlessly throughout the entire house. The layout draws you into a bright, open-concept layout with high ceilings that effortlessly connect the great room, dining area and kitchen. The kitchen serves as a culinary masterpiece. It centers around an expansive island topped with level 4 upgraded quartz countertops. Beautiful ivory cabinets feature crown molding, soft-close hinges and premium dovetail finishes. Equipped with upgraded GE Profile appliances, including a gas cooktop, a stylish range hood and a built-in microwave and oven combo. A custom upgraded backsplash and a deep single sink complete the room. Adjacent to the kitchen, the dining area includes a transom window that floods the interior with natural light. The great room expands your living space even further. A large double slider opens directly onto an expansive covered patio. This seamless transition makes it incredibly easy to entertain guests or simply enjoy a quiet evening outdoors. Tucked away for privacy, the owner's suite serves as a relaxing daily retreat. It features dual walk-in closets that offer substantial storage space for your wardrobe. The attached bathroom provides ultimate convenience with dual vanities and a large walk-in shower. Every detail of the Cordella Jem works together to create a spacious, warm and inviting environment.



Seller reserves the right to make changes or modifications to plans, maps, plan specifications, materials, Features, and colors without notice. Prices are subject to change without notice. Maps, plans, landscaping and elevation renderings are artist's conceptions, not to scale, and may not accurately depict the homes or lots as they are built. This brochure is for illustrative purposes only and not a part of a legal contract. Lic. #CBC051145



GHO HOMES

A GREEN BRICK PARTNER

CORDELLA JEM

3 BEDS • 2 BATHS • 3 BAY GARAGE • 50' x 61' • 2,939 SF
A/C: 1,899 sf • covered entry: 67 sf • covered patio: 317 sf • garage: 656 sf

All dimensions, features, specifications and square footages are approximate and subject to change without notice. Maps, plans, landscaping and elevation renderings are artist's conceptions, are not to scale, and may not accurately depict the homes or lots as they are built. © GHO Homes 2020. Revised October 19, 2022.



772.257.1100 • GHOHOMES.COM