



HIGH POINTE
VERO BEACH, FL 32967 | LOT 130



CORDELLA GRANDE

**4090 TOWER POINTE
WAY**

Move-in date: September 2026

Nicole Morris

P: 772.257.1100

C: 772.882.8990

nicolem@ghohomes.com



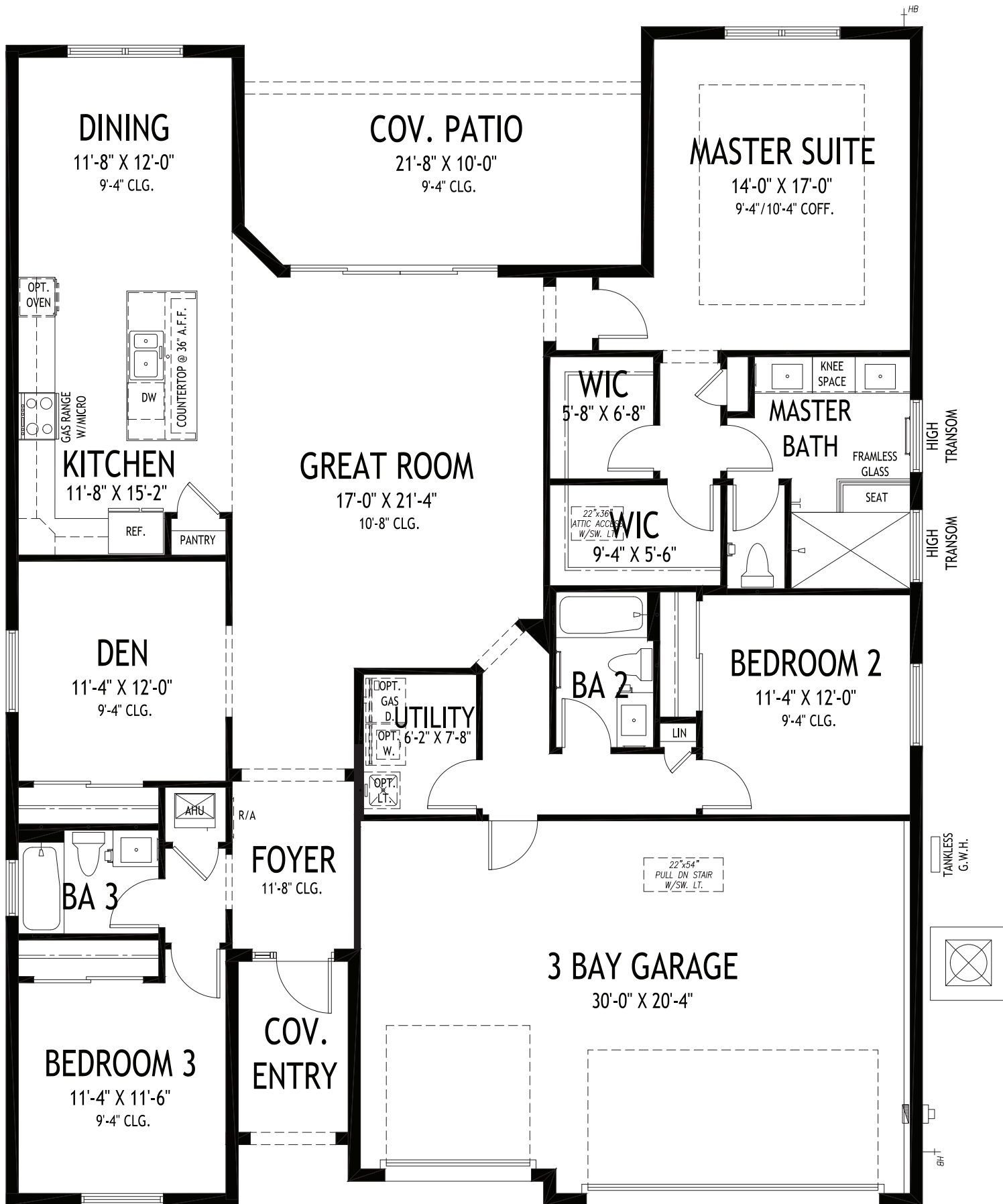
Bed:3 • Bath: 3 • Living SF: 2,190 • Total SF: 3,104

Now: \$610,344

Welcome to the Cordella Grande, a beautifully appointed quick delivery home ready for you this Fall. Offering 2,190 square feet of air-conditioned living space, this elegant residence features three bedrooms, a den, three bathrooms and a spacious three-car garage that delivers plenty of room for vehicles, storage and everything in between. Step inside and feel the difference that high ceilings and a thoughtfully open-concept layout make. The kitchen, great room and dining area flow together seamlessly, creating a warm and inviting space where everyday moments and special gatherings come naturally. The gourmet tuxedo kitchen is the heart of the home, equipped with upgraded GE Profile appliances, a stainless-steel microwave and oven combination and a sleek hood above the cooktop. Refined details abound, from soft-close dovetail cabinetry crowned with elegant moulding to quartz countertops and a stylish backsplash. A generous center island anchors the space, giving you the perfect spot for meal prep, casual dining or simply gathering with the ones you love. Throughout the home, wood-look tile flooring lends both warmth and lasting durability. Architectural touches elevate every room, including a transom window that bathes the dining area in natural light and a coffered ceiling package that adds character to the foyer, great room, dining room and owner's suite. In the great room, a large double slider opens to a generously sized covered patio, extending your living space outdoors and inviting you to entertain or unwind in comfort. The owner's suite offers a private retreat designed around your comfort, complete with dual walk-in closets for ample storage, dual vanities for added ease and a spacious walk-in shower. Tucked just off the great room, the den makes an ideal home office, quiet reading nook or flexible space to suit your lifestyle. Set on a generously sized homesite, the Cordella Grande blends refined design, modern function and everyday comfort into one welcoming home. Schedule your tour today and discover the lifestyle that awaits you.



Seller reserves the right to make changes or modifications to plans, maps, plan specifications, materials, Features, and colors without notice. Prices are subject to change without notice. Maps, plans, landscaping and elevation renderings are artist's conceptions, not to scale, and may not accurately depict the homes or lots as they are built. This brochure is for illustrative purposes only and not a part of a legal contract. Lic. #CBC051145



GHO HOMES

A GREEN BRICK PARTNER

CORDELLA GRANDE

3 BEDS • DEN • 3 BATHS • 3 BAY GARAGE • 50' x 64'-4" • 3,104 SF
A/C: 2,190 sf • covered entry: 60 sf • covered patio: 215 sf • garage: 639 sf

All dimensions, features, specifications and square footages are approximate and subject to change without notice. Maps, plans, landscaping and elevation renderings are artist's conceptions, are not to scale, and may not accurately depict the homes or lots as they are built. © GHO Homes 2019. Revised March 21, 2024.



772.257.1100 • GHOHOMES.COM