



LUCAYA POINTE

VERO BEACH, FL 32967 | LOT 3



CYPRESS

4121 LUCAYA POINTE WAY

Move-in date: May 2026

Diana Leever

P: 772.257.1100

C: 772.828.7074

dianal@ghohomes.com



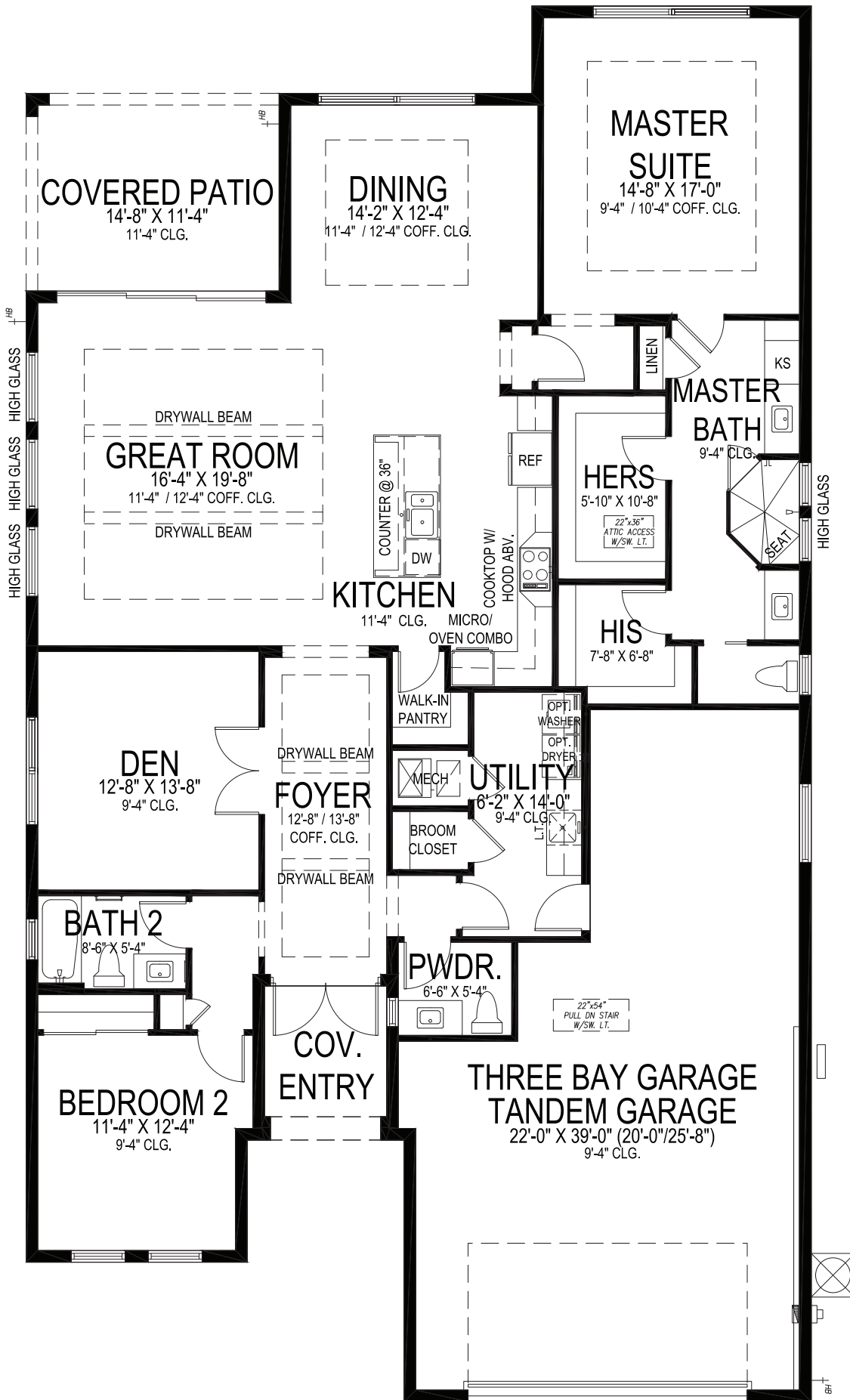
Bed:3 • Bath: 2.5 • Living SF: 2,241 • Total SF: 3,209

Now: \$891,875

Just minutes from the beach, this beautifully designed 3-bedroom, 2.5-bath home offers the space, style and upgrades. With a 3-bay tandem garage, high-end finishes, and a private outdoor retreat, this property blends everyday comfort with luxury living. The 3-bay tandem garage offers plenty of room for multiple vehicles, beach gear, golf carts, tools or recreational toys, all just minutes from the beach. The spacious open-concept layout allows the kitchen, great room and dining area to flow together seamlessly, ideal for everything from daily living to entertaining. The beautiful island kitchen is both stylish and functional, featuring white shaker-style cabinetry with dovetail construction, soft-close doors, full-extension drawers, quartz countertops and a spacious walk-in pantry. Stainless steel KitchenAid appliances and a 36" natural gas cooktop make this a dream kitchen. Durable, wood-look porcelain tile runs throughout the entire home, blending the warmth of wood with low-maintenance, upscale appeal. The great room, enhanced by a 12'4" coffered ceiling, expansive transom windows and a 10-foot triple slider, seamlessly connects the indoors to the outdoor living area. The well-planned dining space which is also accented with a coffered ceiling is perfectly positioned for casual meals, holiday gatherings and entertaining guests. The master suite offers a welcoming retreat with a dedicated foyer for added privacy. The luxurious master bath is complete with split vanities, two large walk-in closets, a generously sized shower and a linen closet for additional storage. The home is designed with flexible secondary spaces, including a secondary bedroom at the front of the home for guest privacy and a versatile den off the foyer that can serve as a home office or fitness room. Step outside to your own oasis, a saltwater pool with waterfall, screened enclosure and a patio designed for year-round enjoyment. The outdoor space also features a hot and cold exterior shower and a side concrete privacy wall, ensuring exceptional privacy and convenience. Energy efficien[...]



Seller reserves the right to make changes or modifications to plans, maps, plan specifications, materials, Features, and colors without notice. Prices are subject to change without notice. Maps, plans, landscaping and elevation renderings are artist's conceptions, not to scale, and may not accurately depict the homes or lots as they are built. This brochure is for illustrative purposes only and not a part of a legal contract. Lic. #CBC051145



CYPRESS

2 BEDS • DEN • 2.5 BATHS • 3+ BAY GARAGE • 45' x 80' • 3,209 SF
 A/C: 2,241 sf • covered entry: 52 sf • covered patio: 164 sf • garage: 752 sf

GHO HOMES

A GREEN BRICK PARTNER

772.257.1100 • GHOHOMES.COM

All dimensions, features, specifications and square footages are approximate and subject to change without notice. Maps, plans, landscaping and elevation renderings are artist's conceptions, are not to scale, and may not accurately depict the homes or lots as they are built. © GHO Homes 2020. Revised March 10, 2025.

