



5697 BENT PINE SQUARE

VERO BEACH, FL 32967 | LOT 19



BENT PINE PRESERVE | TAVVO

Bed: 3 • Bath: 3 • Living SF: 2,603 • Total SF: 3,605

Move-in date: Move-In Ready

\$894,257

CONTACT

Nicole Morris

P: 772.257.1100

C: 772.882.8990

nicolem@ghohomes.com

Final Closeout Opportunity. Discover the award-winning, highly sought-after Tavvo floor plan. Featuring 3 bedrooms, 3 baths, a den, and an oversized 2+ Car Garage, this spacious home offers over 2,600 square feet of air-conditioned living space and is set on an expansive homesite. The home is ideal for both entertaining and everyday living. The gourmet kitchen showcases elegant 2-tone cabinetry, Quartz countertops, premium KitchenAid appliances including a 36" Cooktop, exhaust hood and wall oven, custom pull-out trash bins and spice racks and crown moulding accents throughout. This open-concept design with an urban, upscale flair, is made for entertaining. stylish porcelain wood-plank tile throughout, Sherwin Williams "Crushed Ice" interior paint, 10-foot-tall sliding glass doors that fill the space with natural light. The backyard offers plenty of room for a future pool. Don't miss your chance to own in this exclusive, final phase. Experience the GHO Homes difference today.



Seller reserves the right to make changes or modifications to plans, maps, plan specifications, materials, Features, and colors without notice. Prices are subject to change without notice. Maps, plans, landscaping and elevation renderings are artist's conceptions, not to scale, and may not accurately depict the homes or lots as they are built. This brochure is for illustrative purposes only and not a part of a legal contract. Lic. #CBC051145

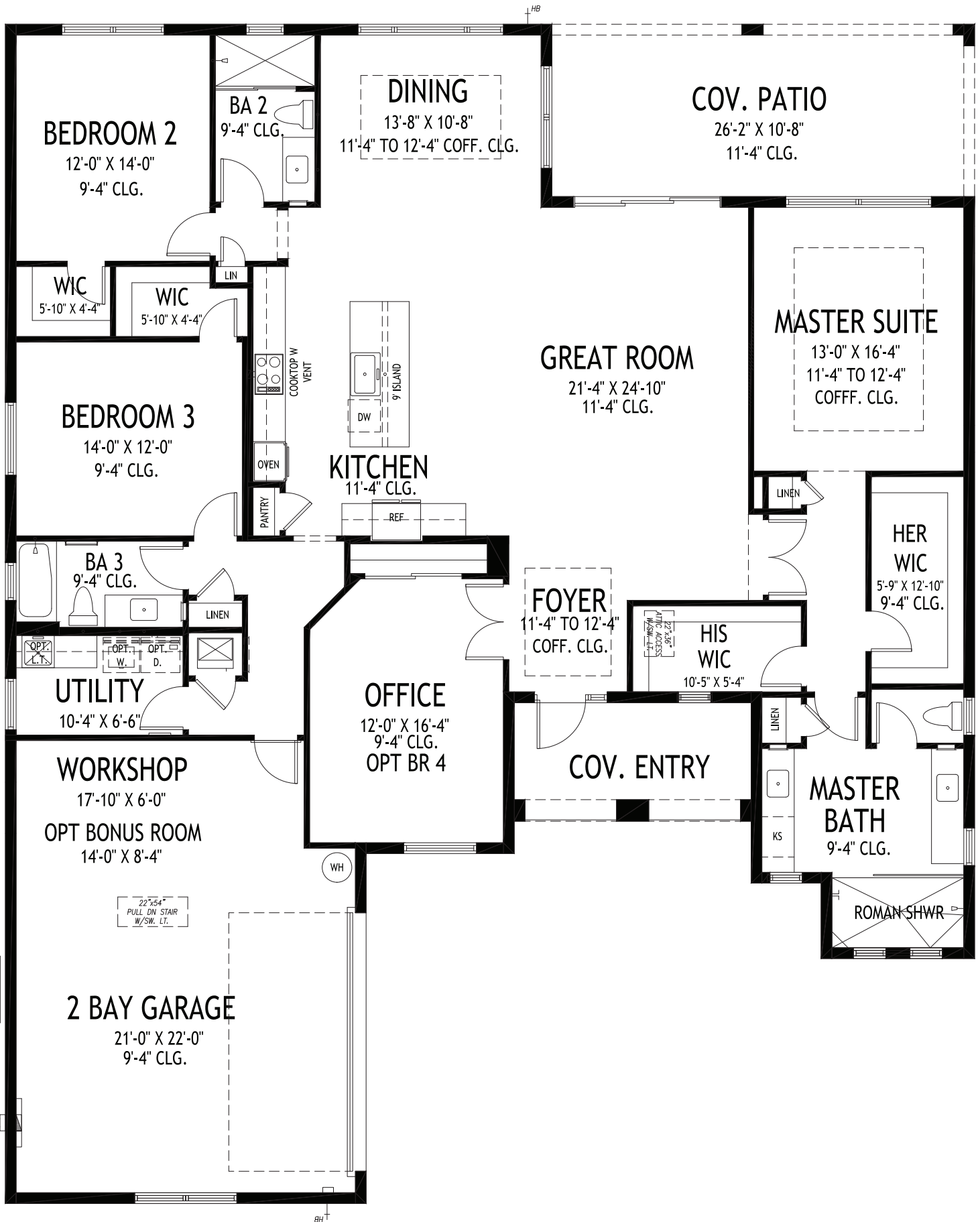


5697 BENT PINE SQUARE
VERO BEACH, FL 32967 | LOT 19

772.257.1100 | GHOHOMES.COM



Seller reserves the right to make changes or modifications to plans, maps, plan specifications, materials, Features, and colors without notice. Prices are subject to change without notice. Maps, plans, landscaping and elevation renderings are artist's conceptions, not to scale, and may not accurately depict the homes or lots as they are built. This brochure is for illustrative purposes only and not a part of a legal contract. Lic. #CBC051145



GHO HOMES

A GREEN BRICK PARTNER

TAVVO

3 BEDS • DEN • 3 BATHS • 2+ BAY GARAGE • 60' x 73' • 3,605 SF
A/C: 2,603 sf • covered entry: 108 sf • covered patio: 279 sf • garage: 615 sf

All dimensions, features, specifications and square footages are approximate and subject to change without notice. Maps, plans, landscaping and elevation renderings are artist's conceptions, are not to scale, and may not accurately depict the homes or lots as they are built. © GHO Homes 2019. Revised February 7, 2023.



772.257.1100 • GHOHOMES.COM