

GHO HOMES

A GREEN BRICK PARTNER

RAVEN'S LANDING
VERO BEACH, FL 32968 | LOT 3**IRVINE****6562 BELTRAN LANE**

Move-in date: October 2026

Douglas Jorgenson

P: 772.257.1100

C: 561.444.9914

douglasj@ghohomes.com



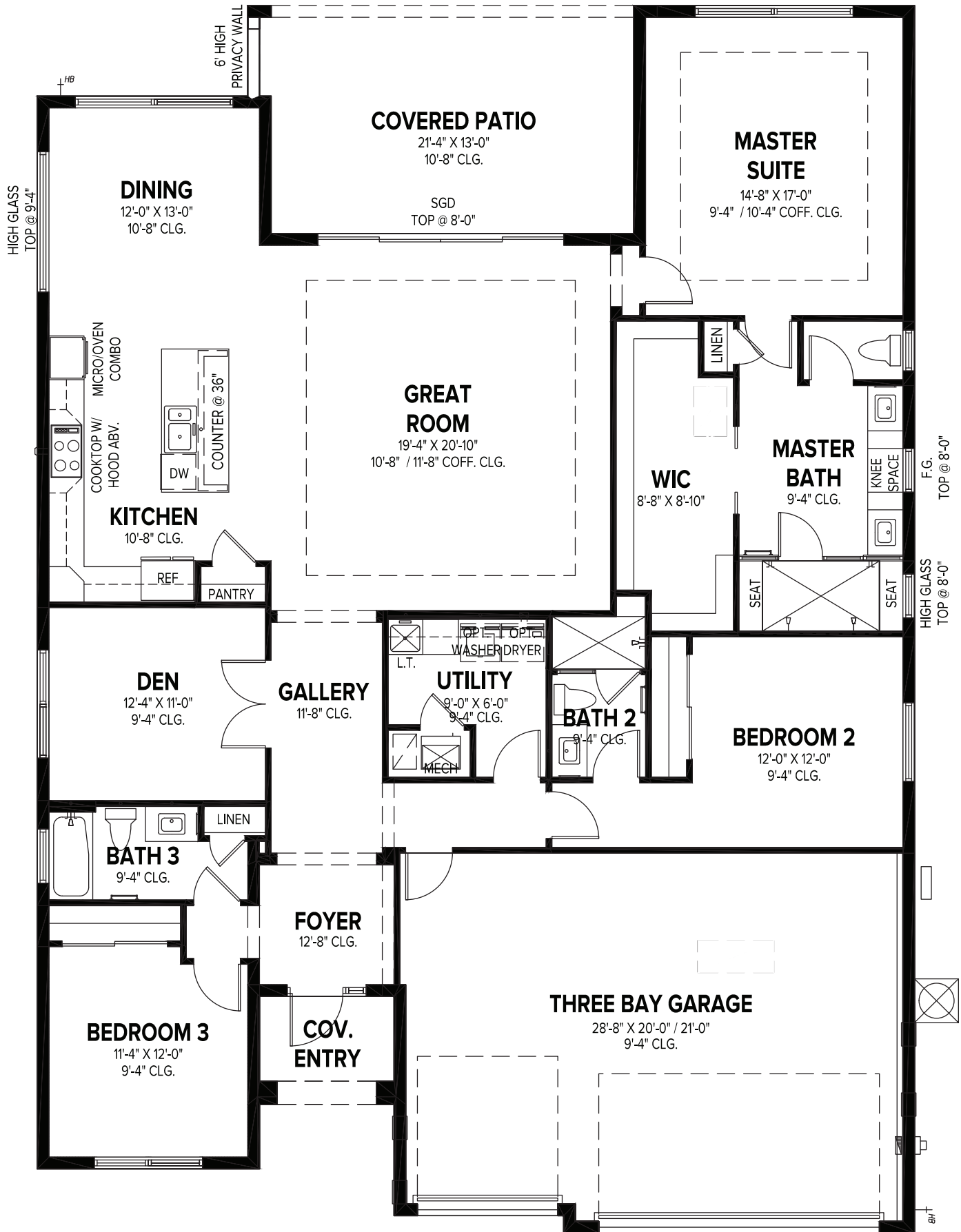
Bed:4 • Bath: 3 • Living SF: 2,372 • Total SF: 3,326

Now: \$736,900

The Irvine plan is a breathtaking 4 bedroom, 3 bath home spanning nearly 2,400 square feet of thoughtfully designed living space. From the moment you step inside, expansive 24 x 48-inch porcelain tile floors lead you through an open layout that embodies modern sophistication. At the heart of this home lies the gourmet kitchen, a masterpiece of both form and function. Equipped with natural gas GE Profile appliances, a striking professional hood and quartz countertops, it invites you to unleash your culinary creativity. Whether hosting an intimate gathering or preparing a grand holiday feast, this kitchen seamlessly combines elegance and practicality. The living spaces are anchored by a stunning fireplace that serves as both a focal point and a source of charm. Every detail has been thoughtfully curated, blending sleek contemporary aesthetics with timeless materials to create an atmosphere of understated luxury. The home's tranquil master suite offers comfort and versatility and is complimented by an expansive walk-in closet. The master bath with walk-in shower and dual vanities creates a luxurious space. The floor plan achieves a harmonious balance between inviting gathering areas and serene personal retreats. Beyond the home's walls, the surrounding community enhances the lifestyle with convenient access to premier shopping and picturesque parks, all just moments away. This is not merely a homes, it is a testament to refined living. Experience it for yourself by scheduling a private showing.



Seller reserves the right to make changes or modifications to plans, maps, plan specifications, materials, Features, and colors without notice. Prices are subject to change without notice. Maps, plans, landscaping and elevation renderings are artist's conceptions, not to scale, and may not accurately depict the homes or lots as they are built. This brochure is for illustrative purposes only and not a part of a legal contract. Lic. #CBC051145



GHO HOMES

A GREEN BRICK PARTNER

IRVINE

3 BEDS • DEN • 3 BATHS • 3 BAY GARAGE • 50' x 70' • 3,326 SF
A/C: 2,372 sf • covered entry: 47 sf • covered patio: 276 sf • garage: 631 sf

All dimensions, features, specifications and square footages are approximate and subject to change without notice. Maps, plans, landscaping and elevation renderings are artist's conceptions, are not to scale, and may not accurately depict the homes or lots as they are built. © GHO Homes 2025. Revised March 9, 2026.



772.257.1100 • GHOHOMES.COM