

**GHO HOMES**

A GREEN BRICK PARTNER

**RAVEN'S LANDING**  
VERO BEACH, FL 32968 | LOT 6**IRVINE GRANDE****6573 BELTRAN DRIVE**

Move-in date: Move-In Ready

**Douglas Jorgenson**

P: 772.257.1100

C: 561.444.9914

douglasj@ghohomes.com



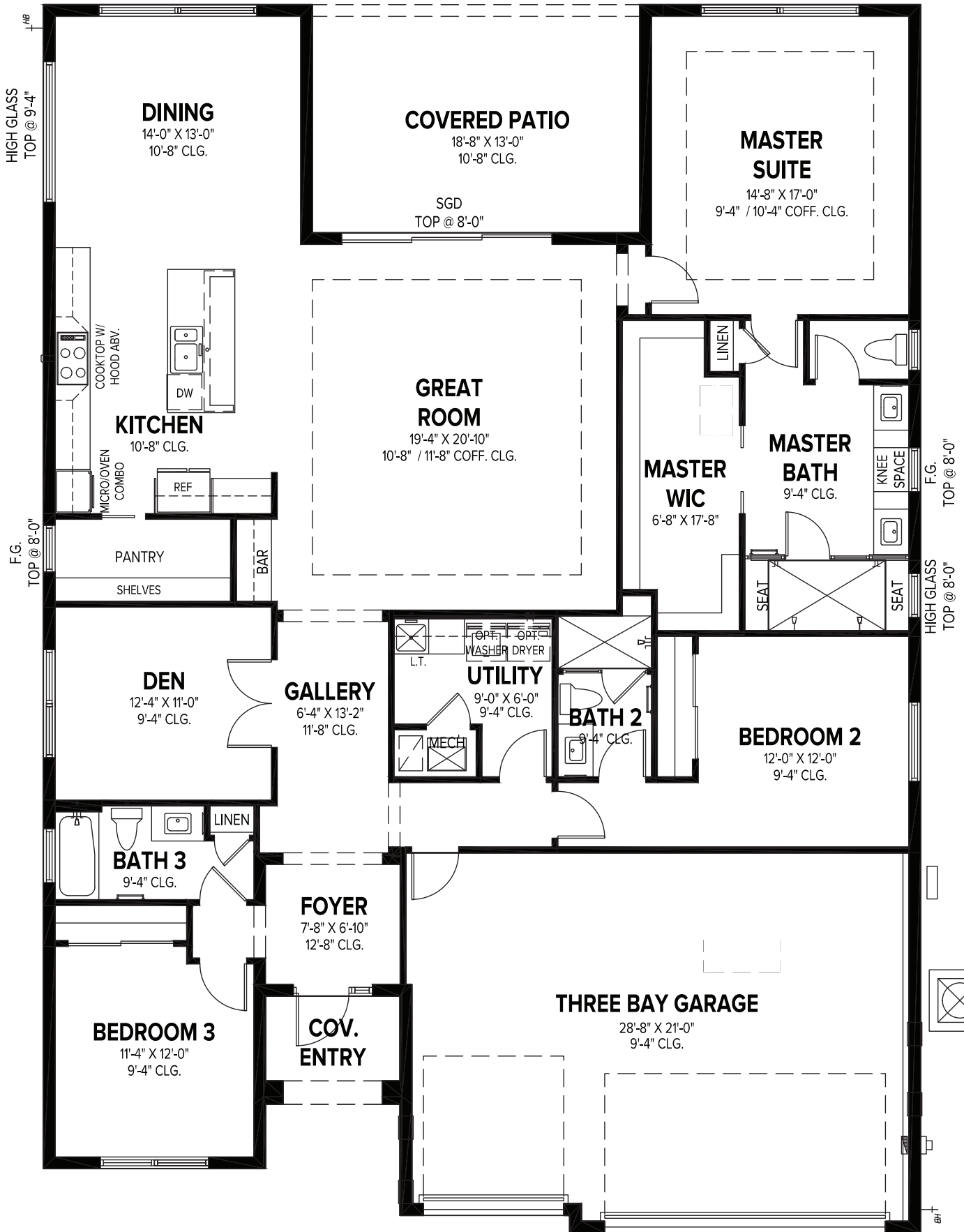
Bed:3 • Bath: 3 • Living SF: 2,467 • Total SF: 3,388

**Now: \$800,900**

Welcome to your dream lakefront retreat, nestled at the peaceful end of a cul-de-sac where the only traffic is the occasional breeze rolling off the water. This stunning 3-bedroom + Den, 3-bathroom contemporary home delivers 2,467 square feet of thoughtfully designed living space that effortlessly blends luxury with everyday comfort. Inside you'll find soaring ceilings and floor-to-ceiling windows to flood every room with natural light while framing breathtaking southern-exposure lake views. The gourmet kitchen is a true entertainers paradise, featuring GE Profile appliances, a 36-inch gas cooktop crowned by a dramatic 42-inch hood, elegant under-cabinet lighting, and a generous pantry that keeps everything organized and accessible. Contemporary design elements with striking black accents create a bold yet refined aesthetic throughout the home. The primary bedroom suite offers a custom oversized closet with built-in shelving, delivering the kind of organization that sparks genuine joy. Each of the three full bathrooms reflects the same attention to detail and quality craftsmanship found in every corner of this residence. Beyond the walls, the outdoor space is nothing short of spectacular. Your private lakefront homesite provides a serene backdrop for morning coffee, evening gatherings, or simply watching nature put on its daily show.



Seller reserves the right to make changes or modifications to plans, maps, plan specifications, materials, Features, and colors without notice. Prices are subject to change without notice. Maps, plans, landscaping and elevation renderings are artist's conceptions, not to scale, and may not accurately depict the homes or lots as they are built. This brochure is for illustrative purposes only and not a part of a legal contract. Lic. #CBC051145



**GHO HOMES**

A GREEN BRICK PARTNER

**IRVINE GRANDE**

3 BEDS • DEN • 3 BATHS • 3 BAY GARAGE • 50' x 70' • 3,388 SF  
A/C: 2,467 sf • covered entry: 47 sf • covered patio: 243 sf • garage: 631 sf

All dimensions, features, specifications and square footages are approximate and subject to change without notice. Maps, plans, landscaping and elevation renderings are artist's conceptions, are not to scale, and may not accurately depict the homes or lots as they are built. © GHO Homes 2025. Revised March 9, 2026.



772.257.1100 • GHOHOMES.COM