

GHO HOMES

A GREEN BRICK PARTNER

RAVEN'S LANDING
VERO BEACH, FL 32968 | LOT 5**STERLING****6574 BELTRAN LANE**

Move-in date: November 2026

Douglas Jorgenson

P: 772.257.1100

C: 561.444.9914

douglasj@ghohomes.com



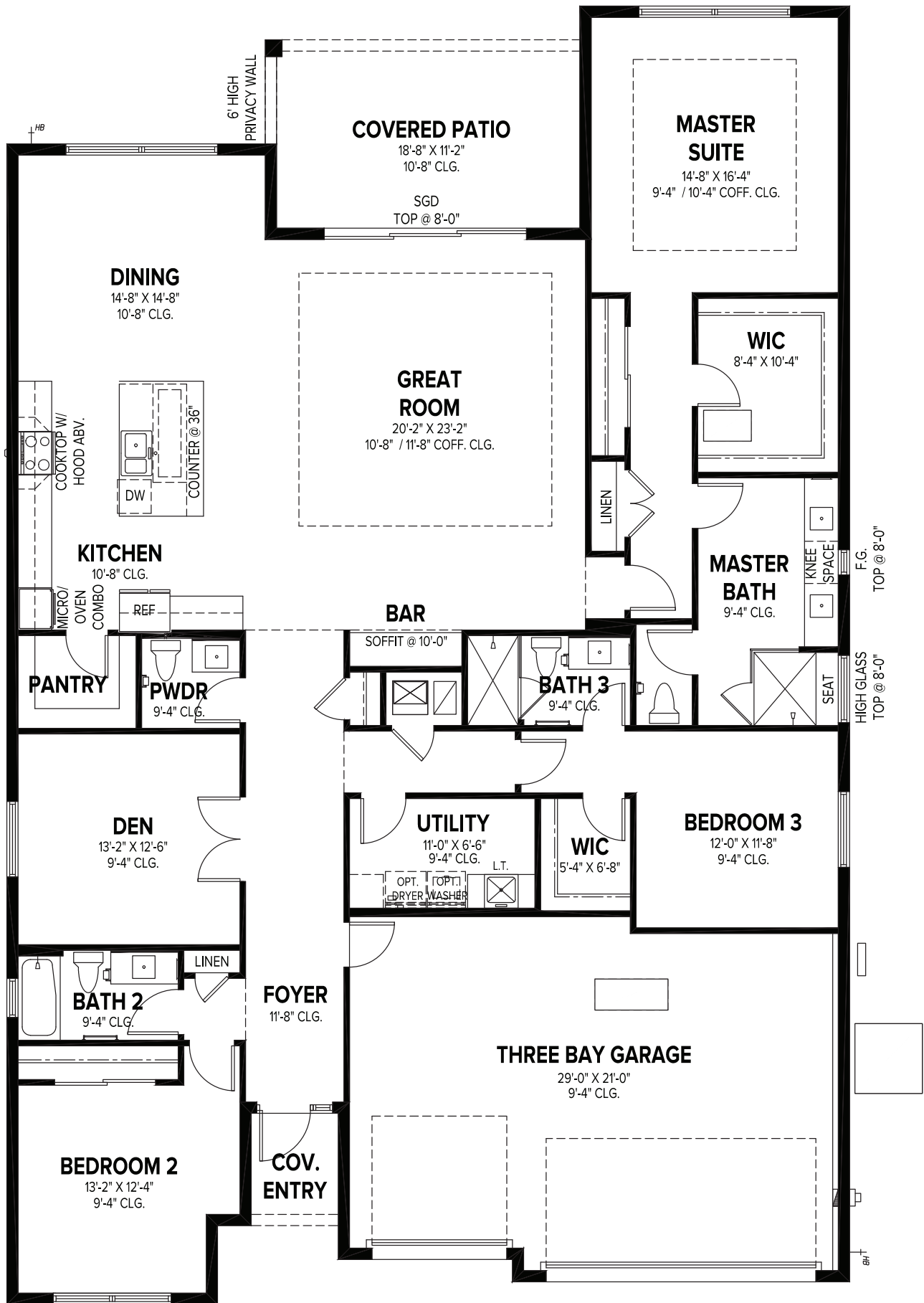
Bed:4 • Bath: 3.5 • Living SF: 2,737 • Total SF: 3,599

Now: \$835,900

Welcome to the crown jewel of Ravens Landing — the largest available floorplan in this coveted community, where contemporary sophistication meets effortless Florida living. This stunning four-bedroom, three-and-a-half-bathroom residence spans nearly 2,750 square feet of meticulously curated living space, designed for those who refuse to settle for ordinary. Enter and prepare to be captivated. Sweeping 33-by-33-inch porcelain tile flows seamlessly throughout, creating a canvas of understated elegance beneath your feet. The gourmet kitchen is nothing short of extraordinary — outfitted with premium GE Profile appliances, a statement hood, and natural gas connectivity for the culinary enthusiast who demands precision. Lustrous quartz countertops extend throughout the home, while a matching quartz backsplash in the kitchen delivers a cohesive, gallery-worthy aesthetic that whispers luxury without shouting. The dining room deserves its own standing ovation, featuring fixed glass that floods the space with golden Florida sunlight, transforming every meal into an occasion. Every upgrade has been thoughtfully selected, marrying contemporary design with a sophisticated color palette that feels both timeless and refreshingly modern. Beyond your front door, convenience abounds. Nearby amenities include Imagine Schools at South Vero and Target Grocery for daily conveniences. Weekend adventures beckon at Knights Island, a nearby park perfect for unwinding beneath swaying palms. This is more than a home — it is a statement. A declaration that life should be lived beautifully, deliberately, and without compromise. Schedule your private showing before someone else claims your dream.



Seller reserves the right to make changes or modifications to plans, maps, plan specifications, materials, Features, and colors without notice. Prices are subject to change without notice. Maps, plans, landscaping and elevation renderings are artist's conceptions, not to scale, and may not accurately depict the homes or lots as they are built. This brochure is for illustrative purposes only and not a part of a legal contract. Lic. #CBC051145



GHO HOMES

A GREEN BRICK PARTNER

STERLING

3 BEDS • DEN • 3.5 BATHS • 3 BAY GARAGE • 50' x 77' • 3,599 SF
A/C: 2,737 sf • covered entry: 34 sf • covered patio: 205 sf • garage: 623 sf

All dimensions, features, specifications and square footages are approximate and subject to change without notice. Maps, plans, landscaping and elevation renderings are artist's conceptions, are not to scale, and may not accurately depict the homes or lots as they are built. © GH0 Homes 2024. Revised May 21, 2025.



772.257.1100 • GHOHOMES.COM