



### SEAGLASS | SAPPHIRE GRANDE 15

Bed: 3 • Bath: 4 • Living SF: 2,928 • Total SF: 3,807

Move-in date: Move-In Ready

**Open House: 03/07/2026 10:00 AM - 5:00 PM | \$2,502,000**

### CONTACT

**Lisa Krynski**

P: 772.257.1100

C: 772.521.0954

[lisak@ghohomes.com](mailto:lisak@ghohomes.com)

This home offers 2,928 square feet of finished living space and features three bedrooms, a club room, and four bathrooms. The custom Sapphire Grande model sits on a private lot that is beautifully surrounded by towering hardwood trees and palm trees. There is also a special fenced-in area for your dog, complete with artificial turf. The back patio area is remarkable, featuring a stunning pool with three sheer descent waterfalls, a champagne spa, and a fully screened-in pool deck. Inside, the home boasts impressive finishes, including volume ceilings and upgraded kitchen cabinets, as well as Café appliances, including a 42-inch built-in refrigerator. In the great room, you'll find a 78-inch linear fireplace with a stylish tile surround, along with large 24" x 48" porcelain floor tiles. Crown molding throughout and tongue-and-groove wood ceiling details add to the elegance of this home. Additionally, the club room is equipped with a bar, making it an ideal space for entertaining. This home tr[...]



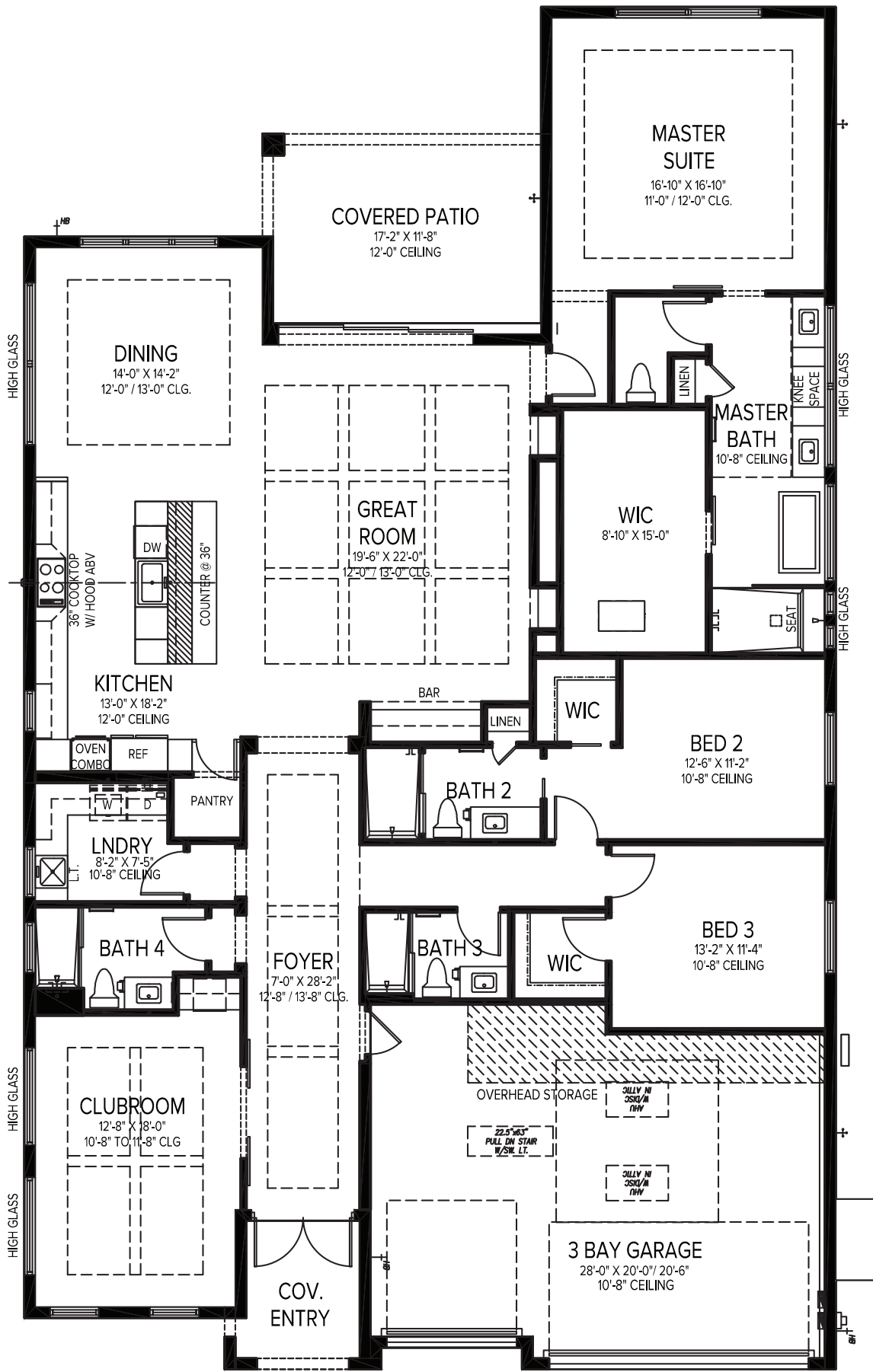


**9193 SEAGLASS COURT**  
VERO BEACH, FL 32963 | LOT 15

**772.257.1100 | GHOHOMES.COM**



Seller reserves the right to make changes or modifications to plans, maps, plan specifications, materials, Features, and colors without notice. Prices are subject to change without notice. Maps, plans, landscaping and elevation renderings are artist's conceptions, not to scale, and may not accurately depict the homes or lots as they are built. This brochure is for illustrative purposes only and not a part of a legal contract. Lic. #CBC051145



# GHO HOMES

A GREEN BRICK PARTNER

## SAPPHIRE GRANDE | SGL 15

3 BEDS • DEN • 4 BATHS • 3 BAY GARAGE • 50' x 84' • 3,807 SF  
 A/C: 2,928 sf • covered entry: 68 sf • covered patio: 197 sf • garage: 614 sf

All dimensions, features, specifications and square footages are approximate and subject to change without notice. Maps, plans, landscaping and elevation renderings are artist's conceptions, are not to scale, and may not accurately depict the homes or lots as they are built. © GHO Homes 2023. Revised June 9, 2025.



772.257.1100 • GHOHOMES.COM