



BELTERRA
PORT ST LUCIE, FL 34987 | LOT 6



IRIS GRANDE

**9363 SW PINNACLE
PLACE NORTH**

Move-in date: December 2026

Jennifer Smith

P: 772.257.1100

C: 561.329.8863

JenniferS@ghohomes.com



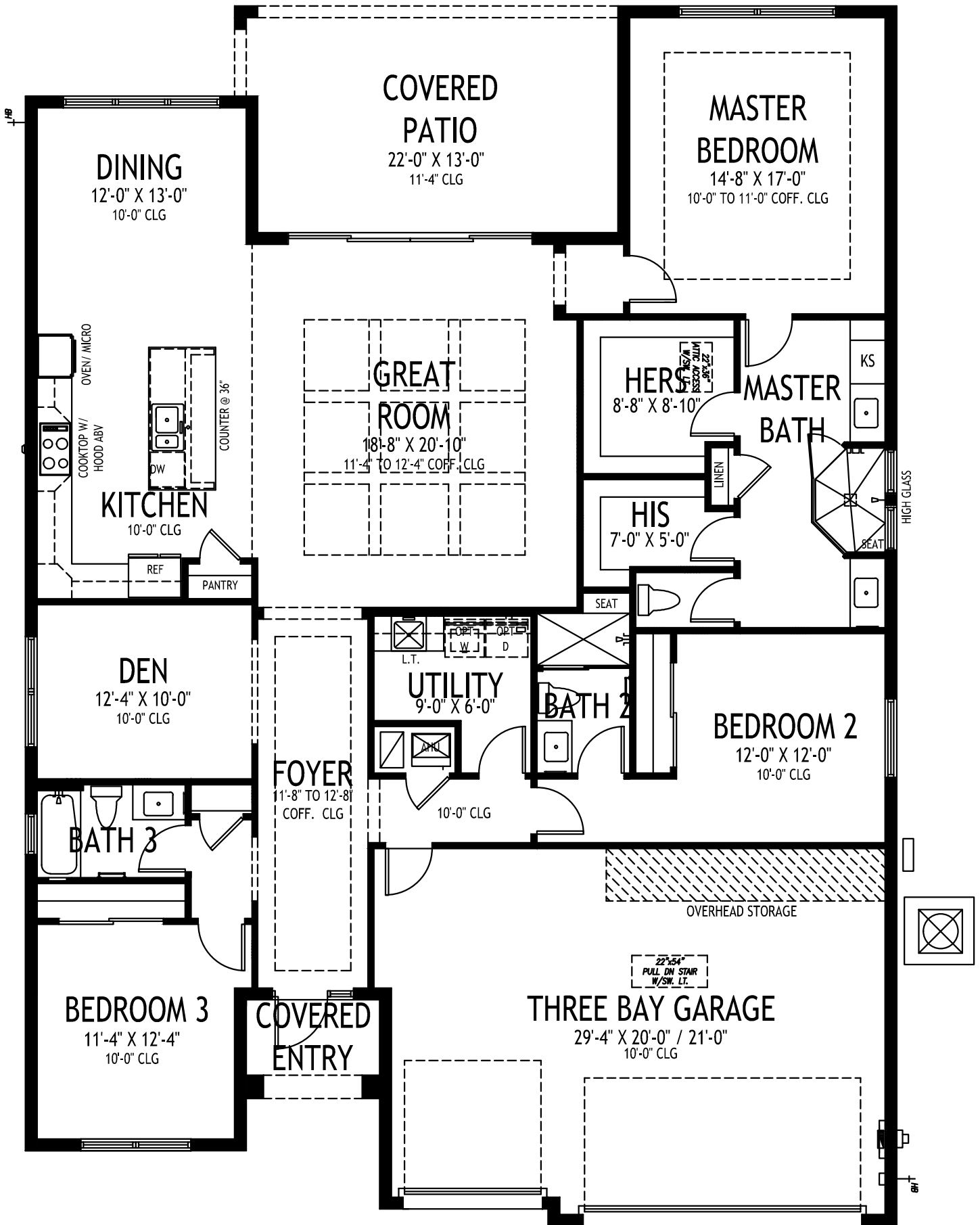
Bed:3 • Bath: 3 • Living SF: 2,361 • Total SF: 3,316

Now: \$825,564

The Iris Grande, available as a quick delivery home and ready by the end of 2026, welcomes you with a striking coastal elevation and a layout crafted for comfort, connection and ease. Step outside to your own private retreat. The enlarged saltwater pool invites you in with large entry steps and three sheer descent waterfalls that bring a soothing rhythm to your days. A full-width pool deck stretches across the back of the home, framed by a screen enclosure that lets you enjoy the fresh air while staying shaded and protected. At the center of the home, the great room is accented by an elegant, coffered ceiling and opens through a 10-foot sliding door onto the lanai and pool deck, blurring the line between indoor comfort and outdoor living. A floor outlet keeps the space flexible for furniture placement, while a prewire for a rear patio TV means entertaining outdoors is effortless from the start. The kitchen with a large center island offers generous room for meal prep and casual dining, complemented by a gas cooktop, stainless steel appliances and a GE Profile appliance package that pairs performance with style. Upgraded quartz countertops, a tasteful backsplash and a Pelican single bowl granite sink with a champagne bronze faucet add warmth and polish. A walk-in pantry and a smart kitchen convenience package, including a silverware drawer, double trash rollout shelves, two base cabinet rollout shelves and an island panel knee wall, keep everything organized and within reach. Throughout the home, porcelain wood-look plank tile brings a clean, cohesive look that wears beautifully over time, while additional hi-hat lighting fills each room with a soft, even glow. Pocket doors at the den entrance create a quiet, versatile space ideal for working from home, reading or relaxing. The master suite is a serene escape at the rear of the home, set apart by a private foyer and brightened by large windows beneath a coffered ceiling. The spa-inspired master bath features split vanities, two generous walk-in closets, a spacious shower with tile carried all the way to the c[...]



Seller reserves the right to make changes or modifications to plans, maps, plan specifications, materials, Features, and colors without notice. Prices are subject to change without notice. Maps, plans, landscaping and elevation renderings are artist's conceptions, not to scale, and may not accurately depict the homes or lots as they are built. This brochure is for illustrative purposes only and not a part of a legal contract. Lic. #CBC051145



GHO HOMES

A GREEN BRICK PARTNER

IRIS GRANDE

3 BEDS • DEN • 3 BATHS • 3 BAY GARAGE • 50' x 70' • 3,316 SF
A/C: 2,361 sf • covered entry: 43 sf • covered patio: 276 sf • garage: 636 sf

All dimensions, features, specifications and square footages are approximate and subject to change without notice. Maps, plans, landscaping and elevation renderings are artist's conceptions, are not to scale, and may not accurately depict the homes or lots as they are built. © GHO Homes 2021. Revised November 1, 2022.



772.257.1100 • GHOHOMES.COM