



**INDIAN RIVER COUNTY
COMMUNITY DEVELOPMENT DEPARTMENT**
1801 27th Street, Vero Beach FL 32960
772-226-1237 / 772-978-1806 fax
www.ircgov.com

November 21, 2014

Joseph Schulke, P.E.
Schulke, Bittle & Stoddard, LLC
1717 Indian River Blvd
Suite 201
Vero Beach FL 32960

RE: **Serenoa Phase II Final Plat**
SD-13-11-04 / 98110046-72714

Dear Mr. Schulke:

The above referenced final plat was approved by the Board of County Commissioners at its regular meeting of November 18, 2014, and was subsequently recorded at Plat Book 27, Pages 8-11. Please find attached a copy of the recorded plat. Should you have any questions regarding this matter, please do not hesitate to contact me at 772-226-1235 or jmccoy@ircgov.com

Sincerely,

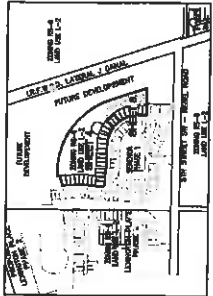
John W. McCoy, AICP
Chief, Current Development

Attachment: Copy of Recorded Plat

cc: Stan Boling, AICP (via e-mail)
Kelly McKinley (via e-mail)
Bill DeBraul (via e-mail)
Nancy Mossali (via e-mail)
David Hays, P.E. (via e-mail)
David W. Schryver, P.S. M. (via e-mail)
Bill Handler (via e-mail)
Charles H. Blanchard (via e-mail)

SERENOA PHASE 2

A RE-PLAY OF A PORTION OF SERENOA PHASE 1, AS RECORDED IN PLAT BOOK 21, PAGE 18, OF THE PUBLIC RECORDS OF INDIAN RIVER COUNTY, FLORIDA, LYING IN SECTION 24, TOWNSHIP 33 SOUTH, RANGE 39 EAST, INDIAN RIVER COUNTY, FLORIDA ALSO BEING IN PART A REPLAY OF PORTIONS OF TRACT 4 AND TRACT 5, SECTION 24, TOWNSHIP 33 SOUTH, RANGE 39 EAST ACCORDING TO THE PLAT OF INDIAN RIVER FARMS COMPANY SUBMISSION AS FILED IN PLAT BOOK 2, PAGE 25 PUBLIC RECORDS OF ST. LUKE (NEW INDIAN RIVER) COUNTY, FLORIDA.

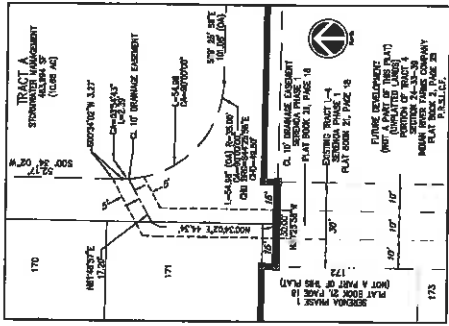


PLAT BOOK 2

PAGE 10

DOCKET NO. 3120141001863T

SHEET LAYOUT KEY MAPS

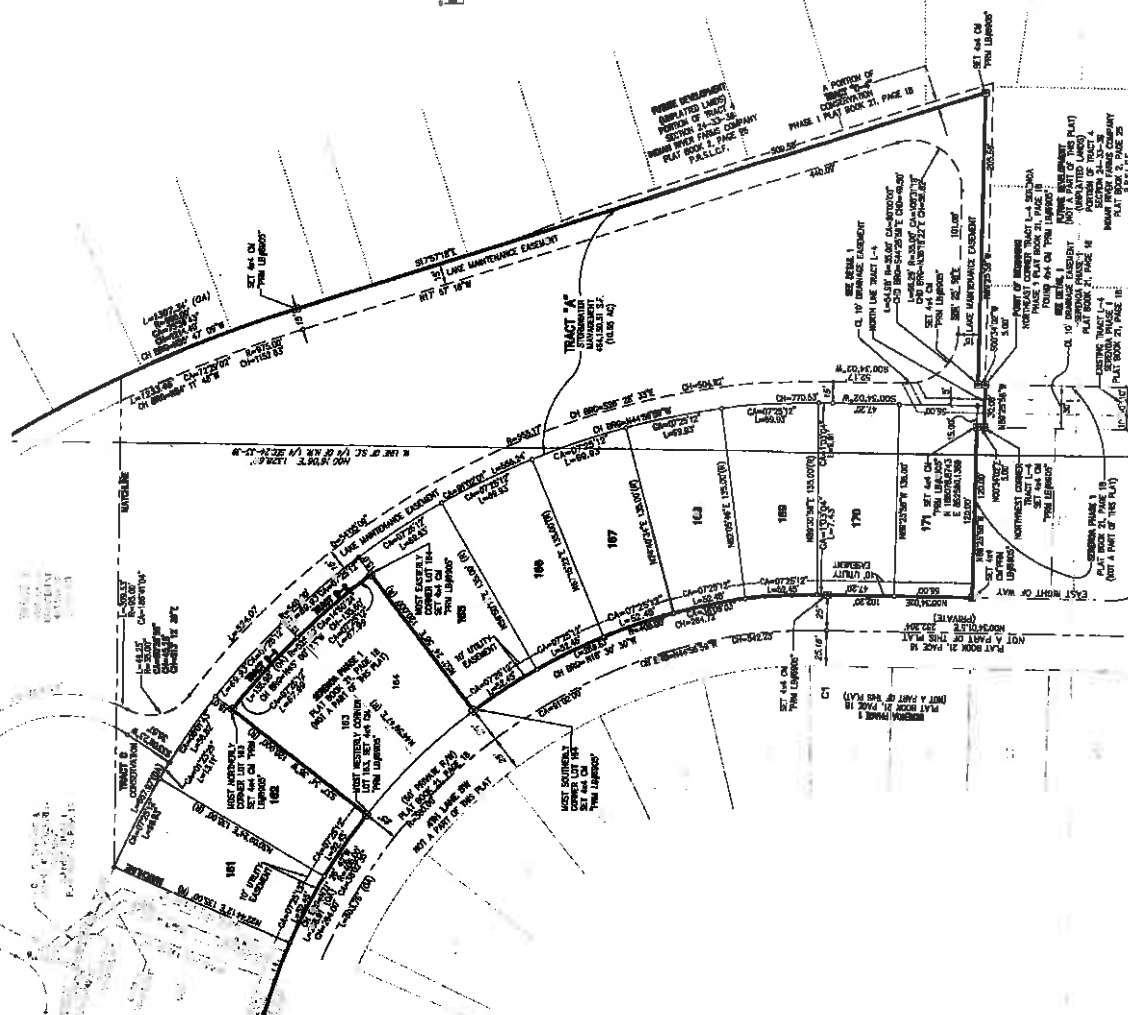


GRAPHIC SCALE
1 inch = 40 feet

MONUMENT LEGEND:
 SET PERMANENT REFERENCE MONUMENT (PRM)
 PARCEL CORNER MARKER
 SET 5/8\"/>

EASEMENT LEGEND:
 D.A.E. - DRAINAGE AND MAINTENANCE EASEMENT
 D.M.E. - DRAINAGE AND MAINTENANCE EASEMENT
 D.L.E. - DRAINAGE AND MAINTENANCE EASEMENT
 P.U.E. - PUBLIC UTILITY EASEMENT
 R.A.D. - RECREATION/LANDSCAPE/DRAINAGE

ABBREVIATIONS:
 CA - CENTRAL ANGLE OF CURVE
 R - RADIUS OF CURVE
 CH - CHORD OF CURVE
 CH - CHORD OF CURVE, DIRECTION
 R/W - RIGHT-OF-WAY
 C - CENTERLINE
 P.S. - PLAT BOOK
 O.A. - OVERALL
 P.O.W. - PERMANENT REFERENCE MONUMENT
 P.M. - PERMANENT REFERENCE MONUMENT
 CH - CHORD OF CURVE, LENGTH
 (CA) - OVERALL
 P.A.S.L.E.T. - PUBLIC RECORDS OF INDIAN RIVER COUNTY, FLORIDA
 P.A.S.L.E.T. - PUBLIC RECORDS OF ST. LUKE COUNTY, FLORIDA
 C.O.W. - CONTROL EASEMENT
 (N) - NOT RADIAL
 (R) - RADIUS
 (D) - FOUND
 (C) - CONCRETE MONUMENT



HOUSTON, SCHULKE, BITTLE & STODDARD, INC. D.B.A. SHEET 3 of 4
MERIDIAN LAND SURVEYORS
 1715 W. UNIVERSITY BLVD., SUITE 100
 TAMPA, FLORIDA 33606-3000
 PHONE: 813-973-1111 FAX: 813-973-1112
 EMAIL: MERIDIAN@MERIDIANL.SURVEYORS.COM

PREPARED BY: CHARLESH, BARNHARD, FSM
 DATE: _____
 REVIEWED BY: _____

