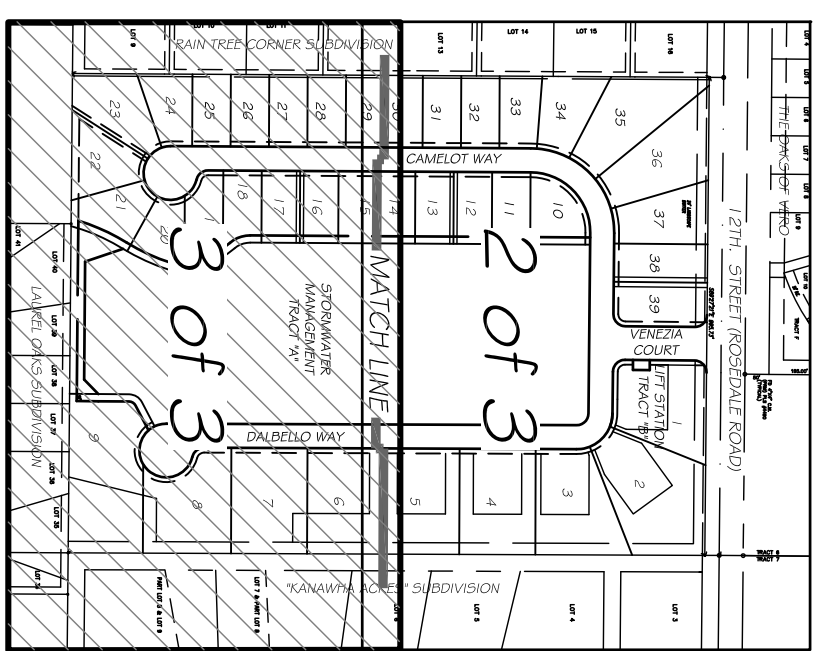


**FLOOD HAZARD WARNING**  
 THIS PROPERTY MAY BE SUBJECT TO FLOODING DURING A 100 YEAR BASE FLOOD EVENT. YOU SHOULD CONTACT BUILDING AND ZONING OFFICIALS AND OBTAIN THE LATEST INFORMATION REGARDING FLOOD ELEVATIONS AND RESTRICTIONS ON DEVELOPMENT BEFORE MAKING PLANS FOR THE USE OF THE PROPERTY.

# VENEZIA ESTATES

A REPLAT OF A PORTION OF TRACT 11, SECTION 9, TOWNSHIP 33 SOUTH, RANGE 39 EAST ACCORDING TO THE PLAT OF INDIAN RIVER FARMS COMPANY SUBDIVISION AS FILED IN PLAT BOOK 2, PAGE 25 PUBLIC RECORDS OF ST. LUCIE (NOW INDIAN RIVER) COUNTY, FLORIDA

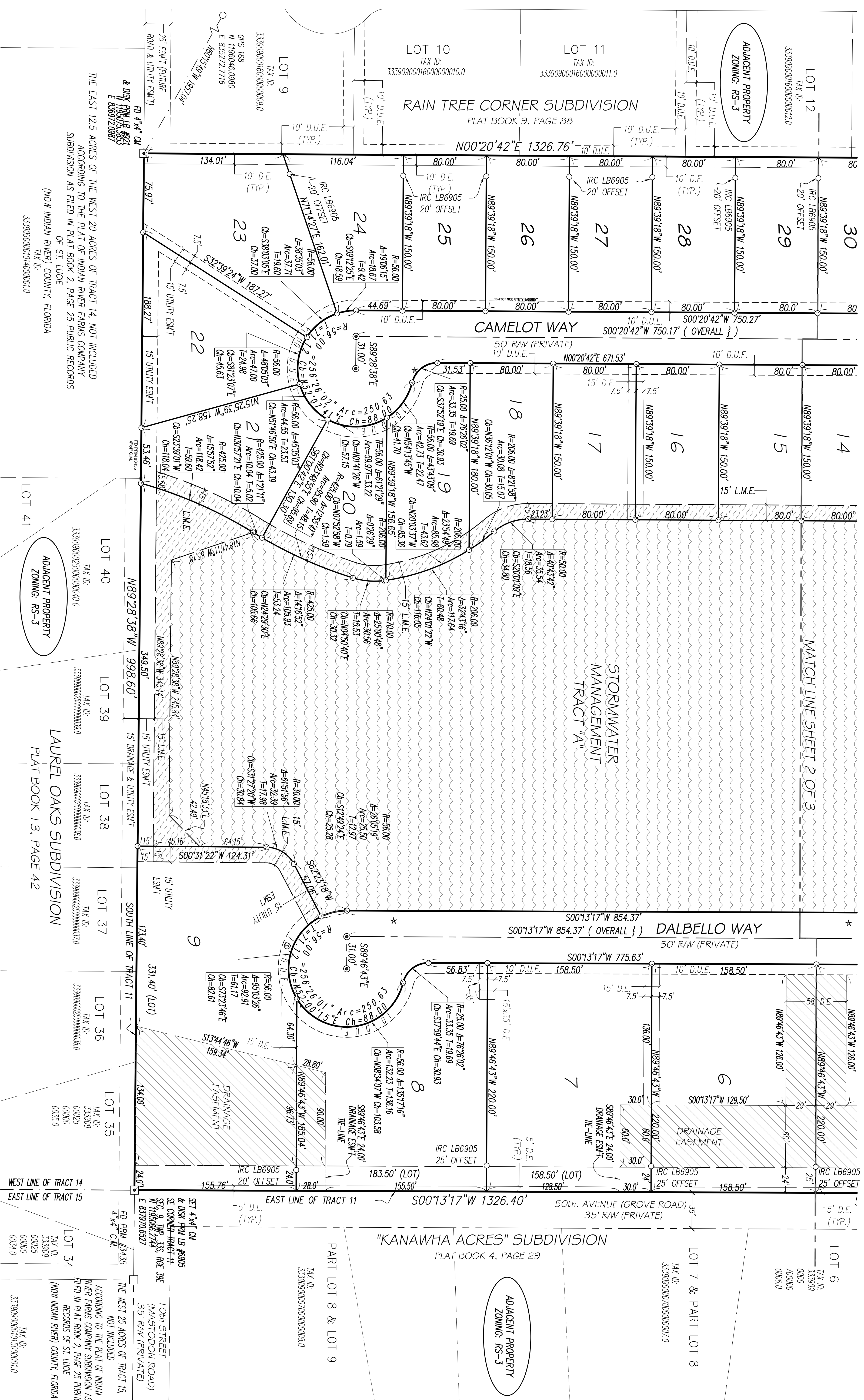
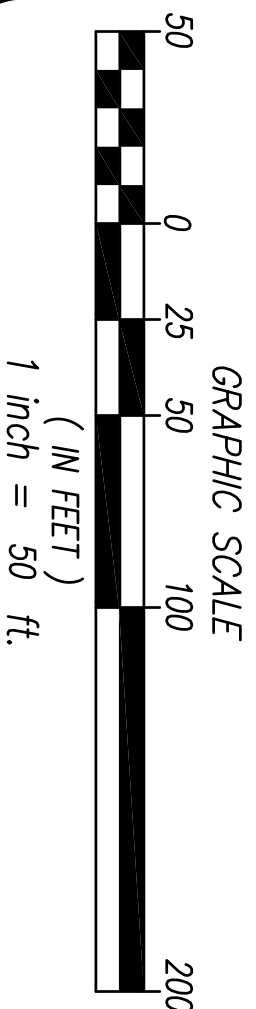
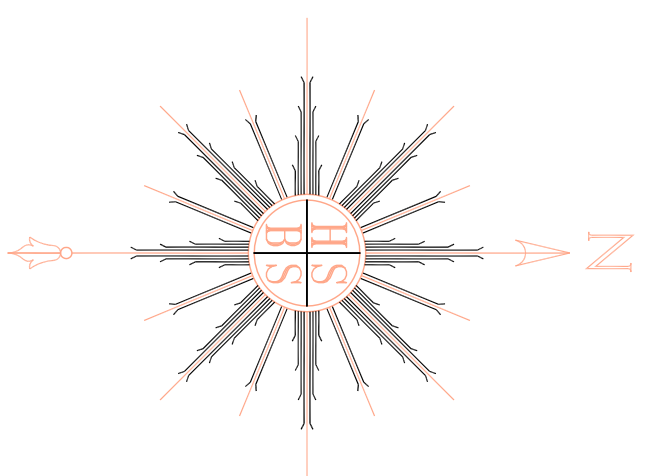
PLAT BOOK \_\_\_\_\_  
 PAGE \_\_\_\_\_  
 DOCKET NO. \_\_\_\_\_



**SHEET INDEX**  
 NOT TO SCALE

- HATCHING LEGEND**
- DRAINAGE EASEMENT
  - STORMWATER MANAGEMENT TRACT "A"
  - LAKE MAINTENANCE EASEMENT

- SYMBOL LEGEND**
- SET PERMANENT REFERENCE MONUMENT (PRM)
  - 4"x4" CONCRETE MONUMENT & BRASS DISK
  - STAMPED HSSB PRM LB6905
  - ROUND CONCRETE MONUMENT (CM)
  - IDENTIFICATION AS NOTED
  - SET PERMANENT CONTROL POINT (PCP) IRON NAIL & BRASS DISK
  - STAMPED HSSB PRM LB6905
  - PARCEL CORNER MARKER SET IRON ROD & CAP
  - STAMPED HSSB LB6905



- ABBREVIATIONS**
- ALL = ALUMINUM
  - CM = CONCRETE MONUMENT
  - C.C.S. = CENTERED CORNER RECORD
  - PCP = PERMANENT CONTROL POINT
  - PRM = PERMANENT REFERENCE MONUMENT
  - F.D. = ROUND
  - ESMT = EASEMENT
  - DE = DRAINAGE EASEMENT
  - LB = LAND SURVEYING BUSINESS
  - MCAD = NATIONAL GEODETIC VERTICAL DATUM
  - PRM = PLAT BOOK
  - OLE = OVERHANG MAINTENANCE EASEMENT
  - ORB = OPTICAL RECORD BOOK
  - PRM = PINE
  - PLS = PROFESSIONAL LAND SURVEYOR
  - POB = POINT OF BEGINNING
  - POC = POINT OF COMMENCEMENT
  - R/W = RIGHT-OF-WAY
  - (R) = RADIAL LINE
  - (TP) = TYPICAL
  - LME = LAKE MAINTENANCE EASEMENT
  - DUE = DRAINAGE & UTILITY EASEMENT
  - R/C = ROW ROAD & CAP

- DATE OF PREPARATION: MARCH 31, 2008**
- | NO. | DATE      | REVISIONS  | DESCRIPTION  |
|-----|-----------|--|--|
| 1   | 6/02/2008 | REVISED PER COMMENTS FROM ST. LUCIE COUNTY SURVEYOR'S OFFICE | REVISED PER COMMENTS FROM ST. LUCIE COUNTY SURVEYOR'S OFFICE |

**HSSB'S HOUSTON, SCHULZE, BRITTE & STODARD, INC.**  
 PROFESSIONAL LAND SURVEYORS & MAPPERS  
 1717 Indian River Blvd., Suite 101 Vero Beach, Florida 32909  
 Phone: (772) 794-1213 Fax: (772) 794-1008  
 e-mail: hsb@hssb.com

**SHEET 3 of 3**