



# COMMUNITY PRICE LIST

Created: Jan-17-2023

## Stoney Brook Farm

### Floorplans

Floorplan	Bed	Bath	Den	Garage	Sq.Ft.	Priced From
<b>Baldwin</b>	3	2.5	Yes	3+ Bay	2,600	<b>TBD</b>
<b>Redmond</b>	3	2.5	Yes	2+ Bay	2,608	<b>TBD</b>
<b>Stanton</b>	3	2.5	Yes	2 Bay	2,757	<b>TBD</b>
<b>Tacoma</b>	3	3	Yes	2+ Bay	2,522	<b>TBD</b>
<b>Tavvo</b>	3	3	Yes	2+ Bay	2,594	<b>TBD</b>
<b>Verona</b>	3	3.5	Yes	2 Bay	3,186	<b>TBD</b>

All base prices include a standard GHO homesite in StoneyBrook Farm. Lakefront homesites are limited and will have a lot premium.

If you own a lot in Stoney Brook Farm and would like GHO Homes to build on your lot, please contact your sales associate for pricing.

### To Learn More About These Homes Please Contact

Catherine Garofalo 772.257.1100 Cell: 772.342.0061 [catg@ghohomes.com](mailto:catg@ghohomes.com)

**GHO HOMES** 772.257.1100 | [ghohomes.com](http://ghohomes.com)



Seller reserves the right to make changes or modifications to plans, maps, plan specifications, materials, features, and colors without notice. Prices are subject to change without notice. Maps, plans, landscaping and elevation renderings are artist's conceptions, are not to scale, and may not accurately depict the homes or lots as they are built. This brochure is for illustrative purposes only and not a part of a legal contract. Picture and floor plan shown above is likely not the actual home being offered, but a similar home/model.

N



8th Street

8th Street

Lake Amelia

Lake Laine

61

62

63

64

65

1

2

3

4

5

Meredith Place

Caroline Drive

60

59

75

76

77

6

7

Lake Julie

58

73

74

78

79

8

9

Lake Julie

57

72

71

80

81

10

11

Lake Julie

56

70

69

82

83

12

13

Lake Julie

55

68

67

84

85

14

15

Lake Julie

54

88

89

90

86

16

17

Lake Julie

53

112

87

85

86

15

16

Lake Julie

52

111

91

87

86

16

17

Lake Julie

51

110

92

87

86

16

17

Lake Julie

50

109

93

87

86

16

17

Lake Julie

49

108

94

87

86

16

17

Lake Julie

48

107

95

87

86

16

17

Lake Julie

47

106

96

87

86

16

17

Lake Julie

46

105

97

87

86

16

17

Lake Julie

45

104

98

87

86

16

17

Lake Julie

44

103

99

87

86

16

17

Lake Julie

43

102

101

100

25

26

27

Lake Julie

42

101

100

25

26

27

Lake Julie

41

40

39

38

37

36

35

# Stoney Brook

F A R M



4th Street

82nd Avenue

82nd Avenue

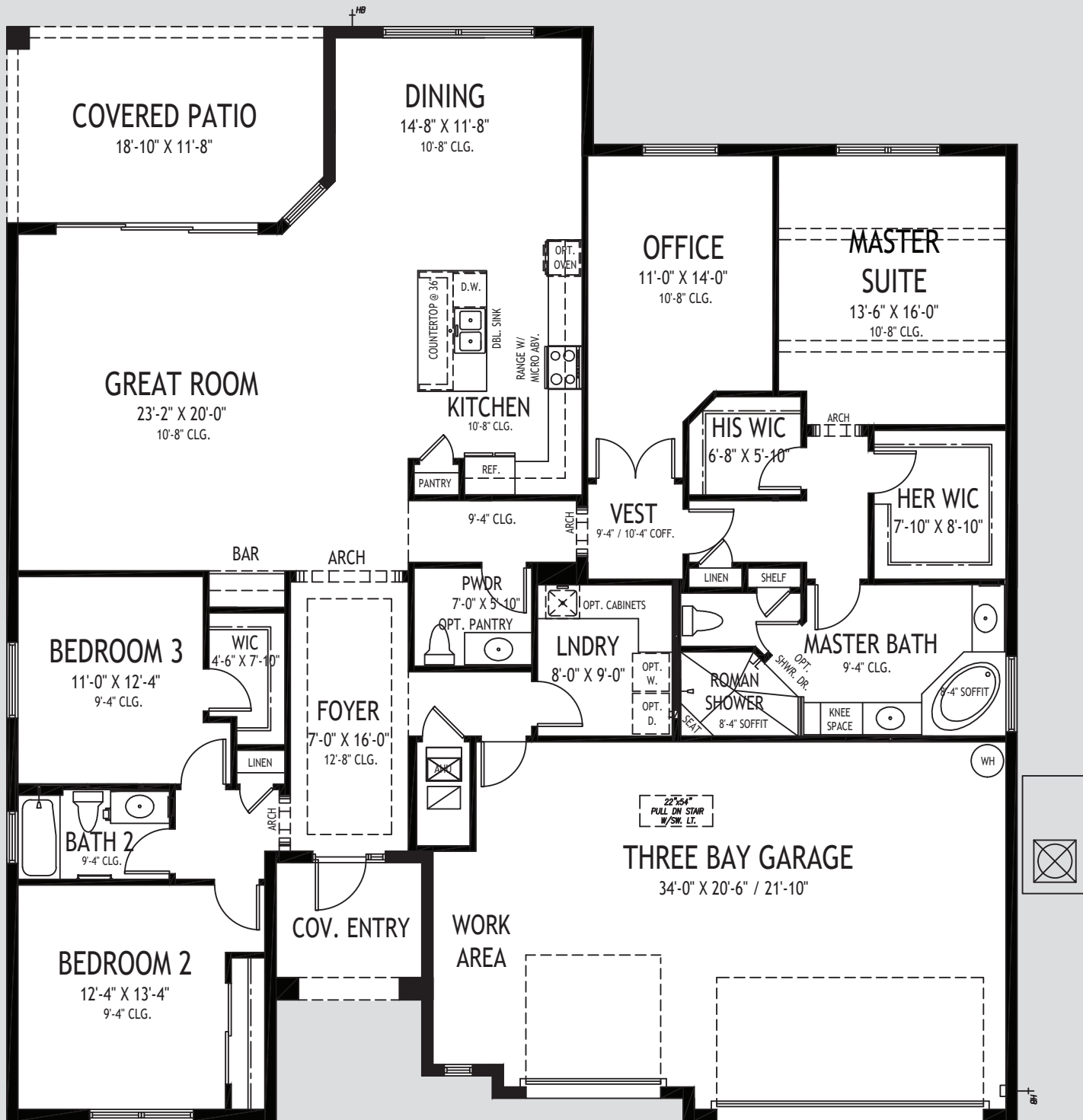


A GREEN BRICK PARTNER

772.257.1100  
GHOHOMES.COM



All dimensions, features, specifications and square footages are approximate and subject to change without notice. Maps, plans, landscaping and elevation renderings are artist's conceptions, are not to scale, and may not accurately depict the homes or lots as they are built. Revised 092320.



Visit the Interactive Floorplan on our website to preview options and make our house your dream home.

**Baldwin**

60' W x 65' D

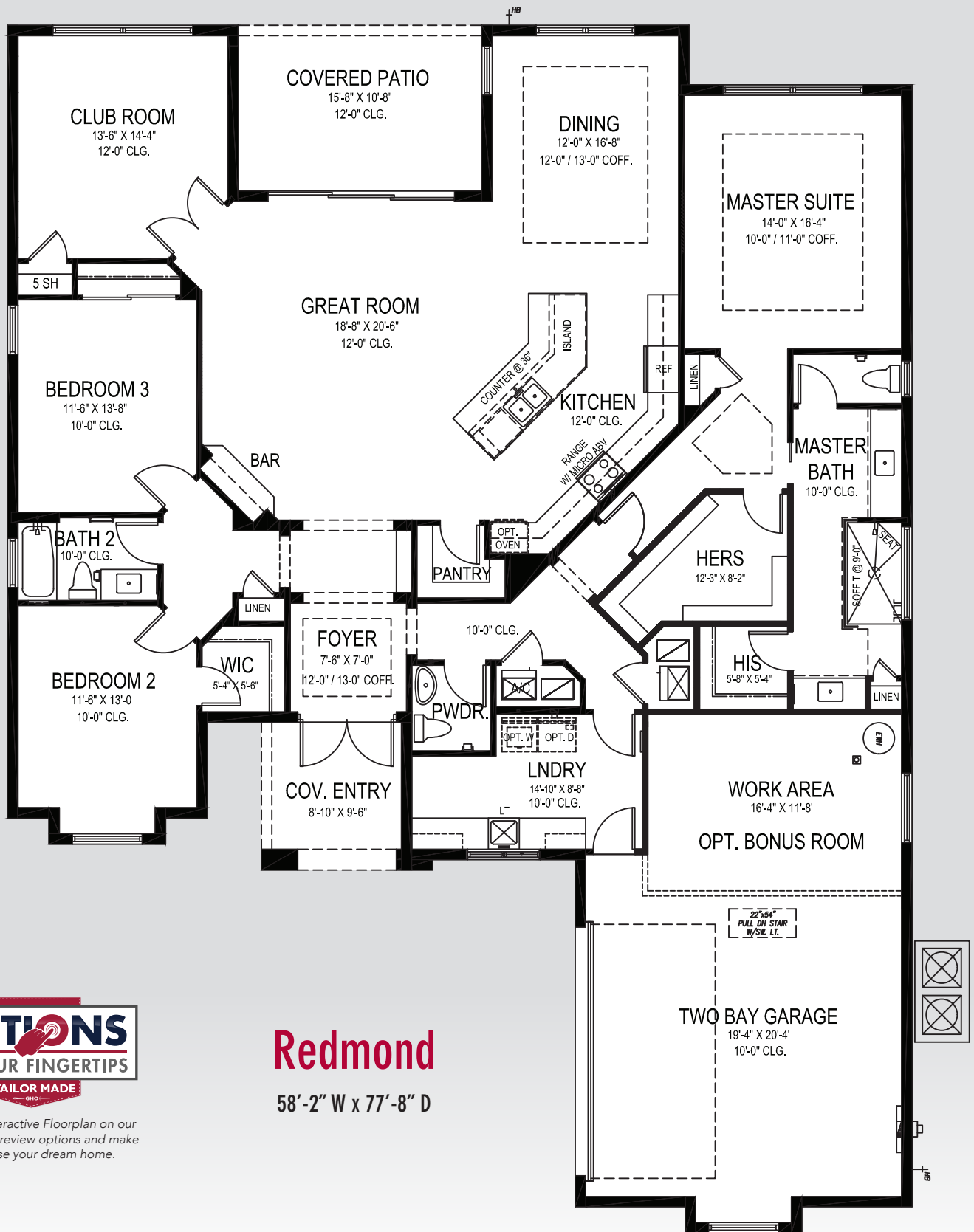
# GHO HOMES

772.257.1100 | ghohomes.com

APPROXIMATE AREAS	
Air Conditioned .....	2,600 Sq. Ft.
Covered Entry .....	71 Sq. Ft.
Covered Patio .....	216 Sq. Ft.
3 Bay Garage .....	748 Sq. Ft.
<b>TOTAL .....</b>	<b>3,635 Sq. Ft.</b>



All dimensions, features, specifications and square footages are approximate and subject to change without notice. Maps, plans, landscaping and elevation renderings are artist's conceptions, are not to scale, and may not accurately depict the homes or lots as they are built.



Visit the Interactive Floorplan on our website to preview options and make our house your dream home.

## Redmond

58'-2" W x 77'-8" D

# GHO HOMES

A GREEN BRICK PARTNER

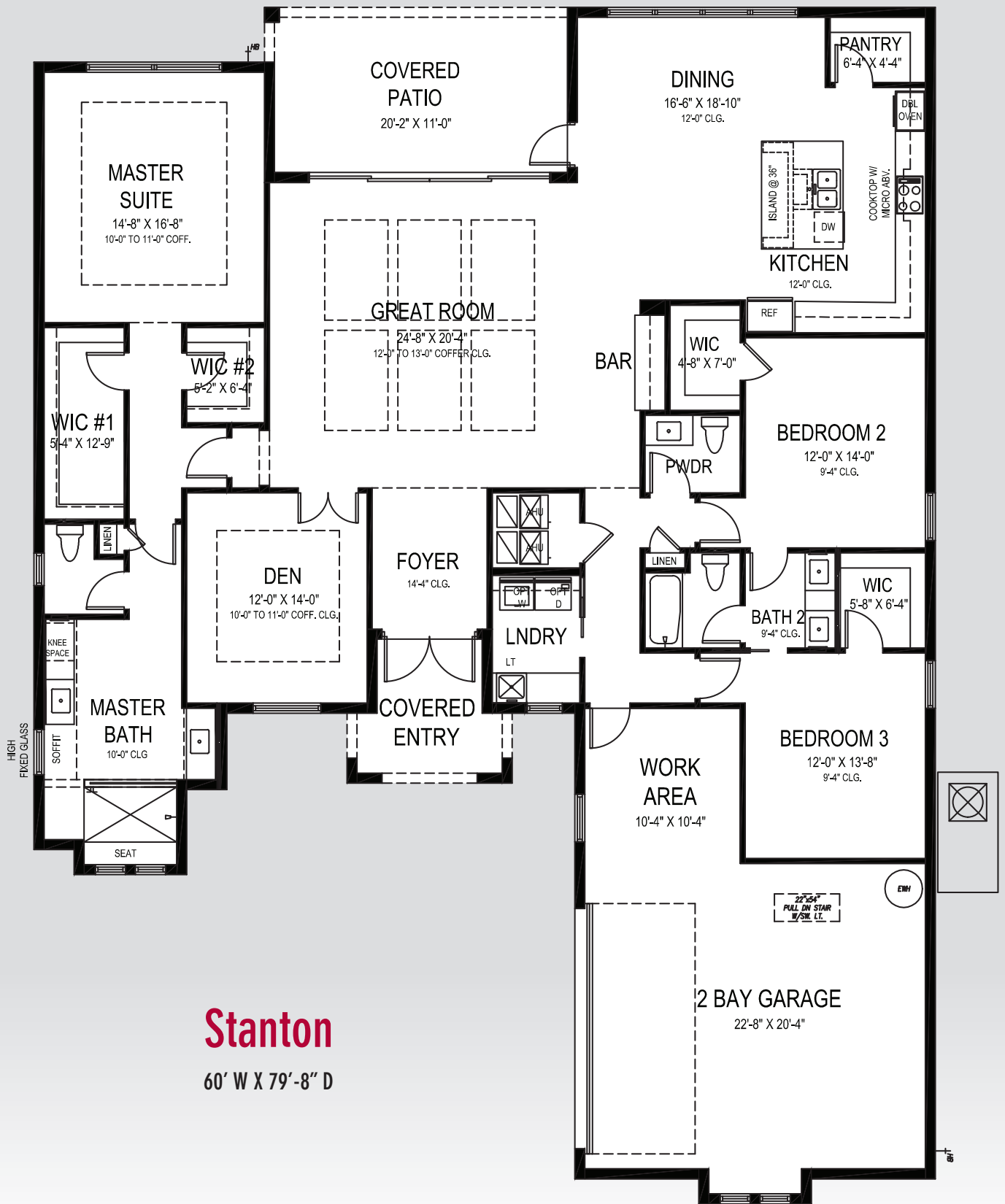
772.257.1100 • GHOHOMES.COM

### APPROXIMATE AREAS

Air Conditioned .... 2,608 Sq. Ft.  
 Covered Entry ..... 86 Sq. Ft.  
 Covered Lanai ..... 167 Sq. Ft.  
 2 Bay Garage ..... 666 Sq. Ft.  
**TOTAL ..... 3,527 Sq. Ft.**



All dimensions, features, specifications and square footages are approximate and subject to change without notice. Maps, plans, landscaping and elevation renderings are artist's conceptions, are not to scale, and may not accurately depict the homes or lots as they are built. © GHO Homes 2019. Revised December 1, 2022.



# Stanton

60' W X 79'-8" D

# GHO HOMES

A GREEN BRICK PARTNER

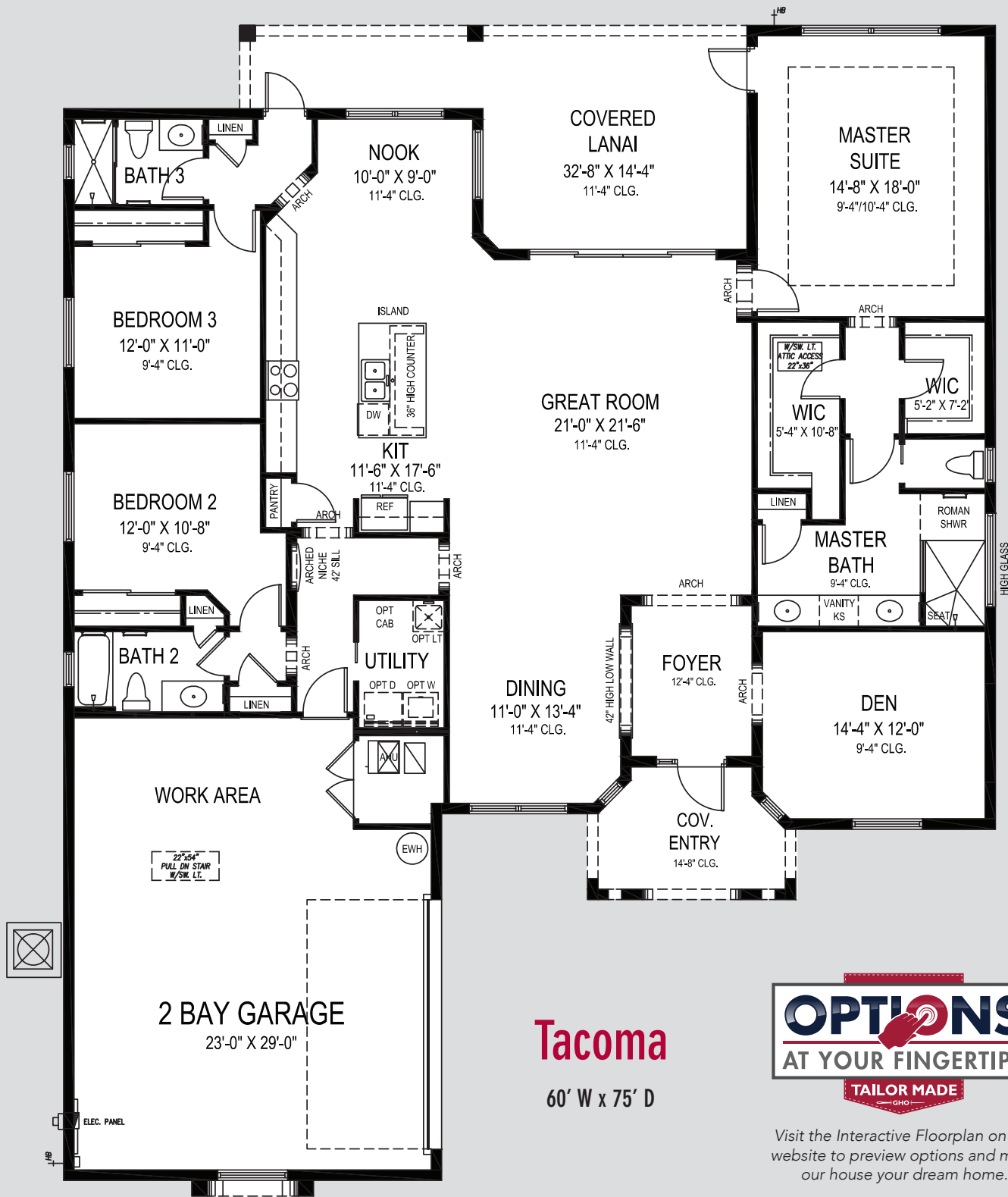
772.257.1100 • GHOHOMES.COM

## APPROXIMATE AREAS

- Air Conditioned .... 2,757 Sq. Ft.
- Covered Entry ..... 86 Sq. Ft.
- Covered Lanai ..... 217 Sq. Ft.
- 2 Bay Garage ..... 630 Sq. Ft.
- TOTAL ..... 3,690 Sq. Ft.**



All dimensions, features, specifications and square footages are approximate and subject to change without notice. Maps, plans, landscaping and elevation renderings are artist's conceptions, are not to scale, and may not accurately depict the homes or lots as they are built. © GHO Homes 2019. Revised April 5, 2019.



Visit the Interactive Floorplan on our website to preview options and make our house your dream home.

# GHO HOMES

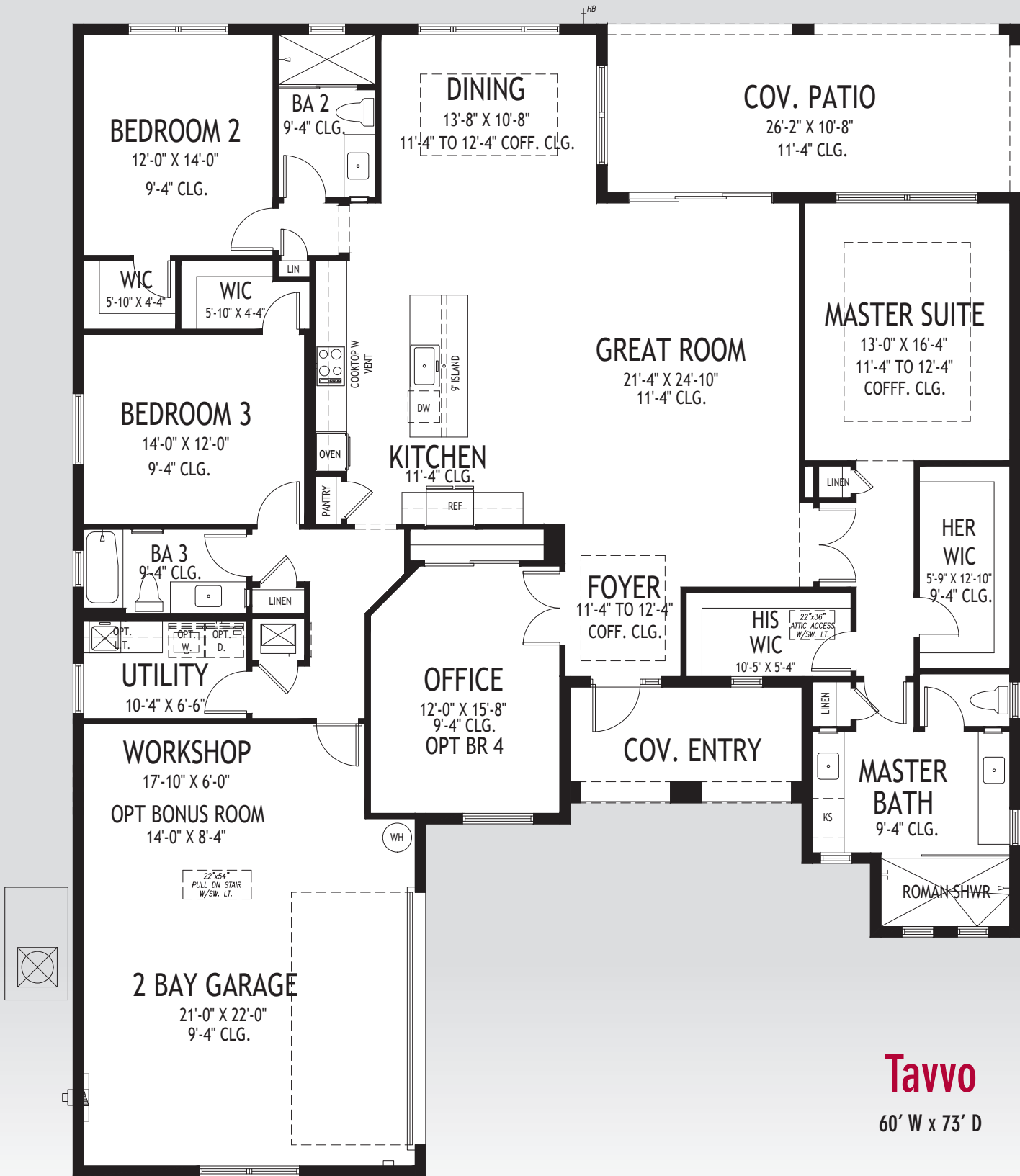
772.257.1100 | ghohomes.com

## APPROXIMATE AREAS

- Air Conditioned ..... 2,522 Sq. Ft.
- Covered Entry ..... 98 Sq. Ft.
- Covered Patio ..... 326 Sq. Ft.
- 2 Bay Garage ..... 689 Sq. Ft.
- TOTAL ..... 3,635 Sq. Ft.**



All dimensions, features, specifications and square footages are approximate and subject to change without notice. Maps, plans, landscaping and elevation renderings are artist's conceptions, are not to scale, and may not accurately depict the homes or lots as they are built.



**Tavvo**  
60' W x 73' D

# GHO HOMES

A GREEN BRICK PARTNER

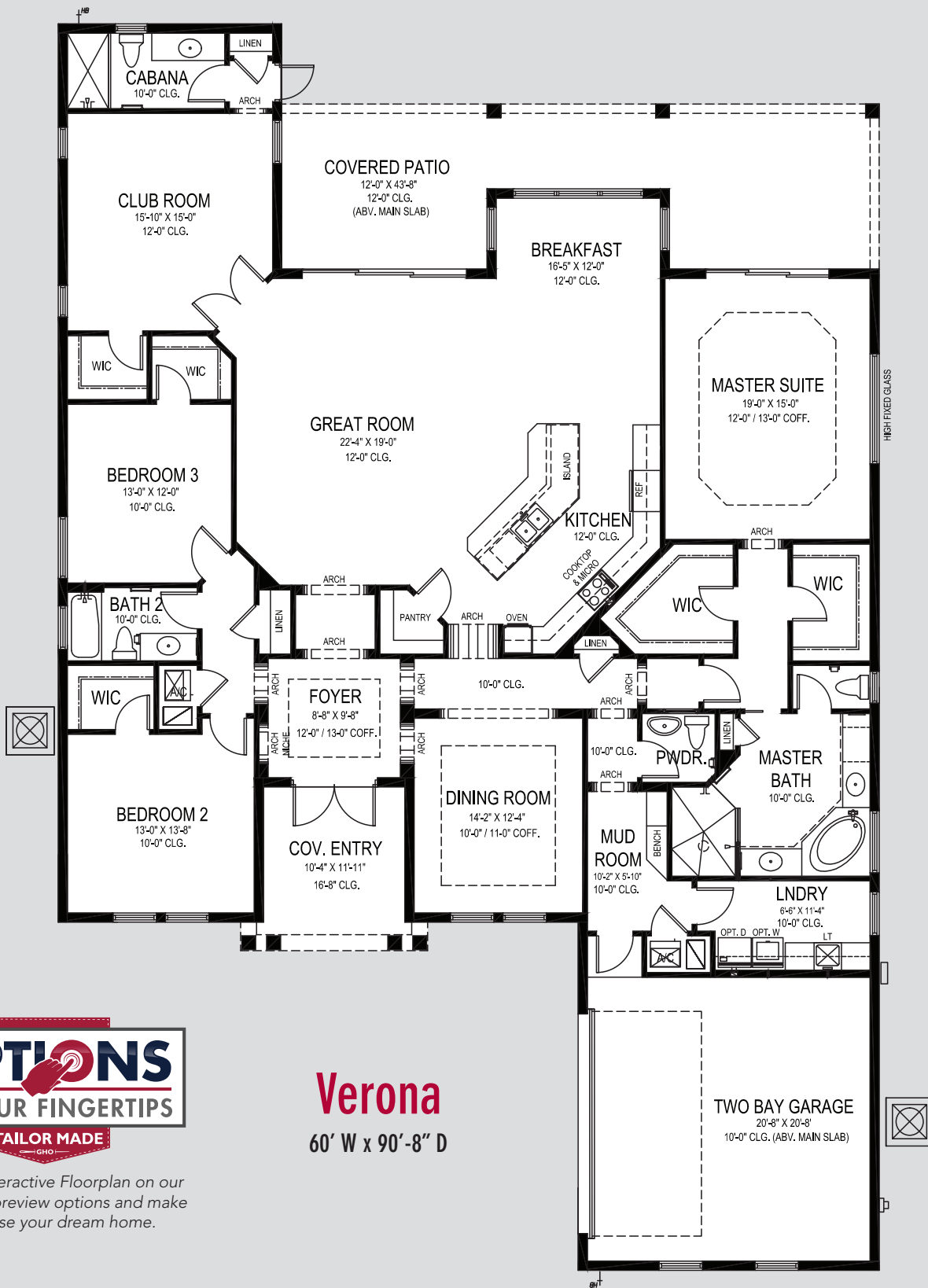
772.257.1100 • GHOHOMES.COM

## APPROXIMATE AREAS

Air Conditioned .... 2,594 Sq. Ft.  
 Covered Entry ..... 108 Sq. Ft.  
 Covered Patio ..... 279 Sq. Ft.  
 2 Bay Garage ..... 617 Sq. Ft.  
**TOTAL ..... 3,598 Sq. Ft.**



All dimensions, features, specifications and square footages are approximate and subject to change without notice. Maps, plans, landscaping and elevation renderings are artist's conceptions, are not to scale, and may not accurately depict the homes or lots as they are built. © GHO Homes 2019. Revised July 12, 2021.



## Verona

60' W x 90'-8" D

Visit the Interactive Floorplan on our website to preview options and make our house your dream home.

# GHO HOMES

772.257.1100 | ghohomes.com

### APPROXIMATE AREAS

Air Conditioned ..... 3,186 Sq. Ft.  
 Covered Entry ..... 131 Sq. Ft.  
 Covered Patio ..... 446 Sq. Ft.  
 2 Bay Garage ..... 483 Sq. Ft.  
**TOTAL ..... 4,246 Sq. Ft.**



All dimensions, features, specifications and square footages are approximate and subject to change without notice. Maps, plans, landscaping and elevation renderings are artist's conceptions, are not to scale, and may not accurately depict the homes or lots as they are built.





# COMMUNITY FEATURES LIST

## Stoney Brook Farm

Created: Jan-17-2023

### "GHO Connectivity" Technology/Convenience Features

- ☑ **GHO Smart Panel with 1 CAT6 data line & 4 RG6 cable TV locations, per plan, prewired for AT&T or Comcast**
- ☑ **Wall Mounted TV Package installed at 60 inches above floor in Master Suite and Great Room, includes Wall Backing w/wire pull chase rings, cable and power outlet at 60 inches above floor and below at standard wall height (locations included in Smart Panel description above)**
- ☑ **Wifi Enabled Belt Driven Automatic Garage Door Opener**
- ☑ **NEST Next Generation Learning Thermostat Or Equivalent**
- ☑ **Nest Hello Video Door Bell - Wifi Ready - Or Equivalent**
- ☑ **Smart Deadbolt - Entry Door**

### Construction Features

- ☑ **Double Row Steel & Concrete Bond Beam**
- ☑ **Plywood 5/8" (19/32) Roof Sheathing (no particle board)**
  - **Professionally Engineered Roof Trusses with Hurricane Straps**
  - Concrete Slab on Grade with Steel Reinforcement and Fibermesh Concrete
  - **Concrete Block Construction with Concrete and Steel Reinforcement**
  - Concrete Based Textured Exterior Wall Finish
  - Underground County/City Electrical, Water and Sewer Connections
  - Underground Connection to FPL Supplied Electrical Power
  - **Sentricon Termite Treatment and Control System - 1 year service included**

### Exterior Features

- **Concrete Tile Roof System, Choice of Flat or Roll Style and Select Colors**
- ☑ **Impact Glass - All Windows, Sliders and Glass Doors - all openings**
- **Wind Rated Garage Doors**
- **Paver Driveway, Front Walks and Rear Covered Patio Floor**
- ☑ **Fiberglass Raised-Panel 8' Front Doors with Clear Impact Glass Single Lite Sidelites - per plan**
- **Professionally Designed Landscaped Package and Floratam Sod**
- **Automatic Irrigation System, Master Community Water Supply**
- Exterior GFI Electric Outlets (2)
- Exterior Garden Hose Connections (2)
- **Sherwin Williams Acrylic Exterior Paint on Exterior Walls of Home**

**GHO HOMES** 772.257.1100 | [ghohomes.com](http://ghohomes.com)



Seller reserves the right to make changes or modifications to plans, maps, plan specifications, materials, features, and colors without notice. Prices are subject to change without notice. Maps, plans, landscaping and elevation renderings are artist's conceptions, are not to scale, and may not accurately depict the homes or lots as they are built. This brochure is for illustrative purposes only and not a part of a legal contract. Picture and floor plan shown above is likely not the actual home being offered, but a similar home/model.



# COMMUNITY FEATURES LIST

## Stoney Brook Farm

Created: Jan-17-2023

### Utility Room and Garage

- ☑ **Shaker Style Upper & Lower Laundry/Utility Room Cabinets (GHO Level 1) w/ Drop in Laundry Tub**
- ☑ **Granite/Quartz Counter Top on Base Cabinets in Utility Room**
  - **Drop Down Stairs to Attic**
- ☑ **LED Lighting Provided for Garage and Utility Room**
- ☑ **Garage Floor Concrete Finished Covering - Epoxy**

### Gourmet Kitchens

- ☑ **Kitchen Cabinets w/ Dove Tail Drawers & Soft-close Drawers. Dove Tail & Soft Close Not Standard in Painted Cabinet Options - (GHO Level 2 Selections)**
- ☑ **Kitchen Cabinets feature Crown Molding, Glass Doors, Light Valance and Upgraded Layout - per plan**
- ☑ **Granite or Quartz Kitchen Counter Top, with 4 inch back splash, layout per plan (GHO Level 1 Selections)**
- ☑ **GHO Gourmet Kitchen Layout Featuring a 30" Cook Top**
  - **Kitchen Faucet: Pull Out Spray - Stainless Steel Finish**
  - **Stainless Steel Undermount Kitchen Sink 70/30 Split**
  - **Stainless Steel Finish Appliance Package**
  - **Refrigerator, LED, Glass Shelves**
  - **Over the Range Microwave**
- ☑ **Double Wall Oven**
- ☑ **30 inch Electric Glass Cooktop**
  - **Dishwasher**
  - **Flooring: Ceramic Tile in Kitchen and Breakfast Rooms per plan**
- ☑ **Natural finish wood shelving in Pantry**

### Luxury Bathrooms

- ☑ **Raised Height Bath Vanity Cabinets (GHO Level 2 Selections)**
- ☑ **Granite or Quartz Bath Vanity Top (GHO Level 1 Selections) with Rectangular White Under-Mount Sink - all baths**
- ☑ **Oversized Walk-In Showers - per plan**
  - **Built in Shower Seat in Master Shower, Ceramic Tile Finish - per plan**
  - **Built in Shower Soap Niche in all Showers, per plan**
  - **Clear Glass Shower Enclosures or Glass Panels - per plan**
- ☑ **Drop in Acrylic Master Bath Tub with Tile Tub Deck Top, Per Plan**
  - **Enamel Steel Tub/Shower combo in Secondary Bathroom(s)**

**GHO HOMES** 772.257.1100 | ghohomes.com



Seller reserves the right to make changes or modifications to plans, maps, plan specifications, materials, features, and colors without notice. Prices are subject to change without notice. Maps, plans, landscaping and elevation renderings are artist's conceptions, are not to scale, and may not accurately depict the homes or lots as they are built. This brochure is for illustrative purposes only and not a part of a legal contract. Picture and floor plan shown above is likely not the actual home being offered, but a similar home/model.



# COMMUNITY FEATURES LIST

## Stoney Brook Farm

Created: Jan-17-2023

**Ceramic Tile Bathroom Floors with Walls and Shower Floors - Choice of Deco Wall Tile Packages with Listello**  
Features all Baths (GHO Level 1 Selections)

**Bathroom Faucets and Fixtures (Brushed Finish)**

**Raised, Comfort Height White Toilets - all Bathrooms**

- **Full Width Oversized Height Vanity Mirrors**
- **Clear Glass Windows in all Baths with Frosted Windows Option- per plan**

### Interior Appointments

**8 Ft. Two-Panel Interior Doors with Square Top, Oversized Door Casing and Baseboard**

**Crown Molding in Foyer, Great Room/Family Room, Kitchen, Living Room, Dining Room and Master Bedroom - perimeter of room only/ layout per plan**

- **Solid Surface White Window Sills Throughout Living Area**

**Ceramic Tile Flooring in Foyer, Kitchen, Halls, Great Room or Family Room & Living Room, Dining Room and Utility Room - layouts per plan (GHO Level 1 Selections)**

- **Designer Flooring Collection - Choice of Select Oversized Ceramic Floor Tile**
- **Wall-to-Wall Carpet in Choice of Designer Colors in all Bedrooms and Den (GHO Level 1 Selections)**

### Interior Design Features

**Rounded Interior Wall Corners, Excluding Windows, Doors, Sliding Glass Doors, Bathrooms, Garages, Ceilings and Closets - per plan**

- **Flat Volume Ceilings - Minimum over 9feet High (per plan)**
- **Designer Knockdown Texture on Ceilings**
- **Air-Conditioned Walk-In Closets - per plan**

**Designer Two Tone Interior Paint Upgrade - Choice of Select Colors (select one) and White for Trim, Ceiling & Garage**

**Natural finish wood open shelving in all closets, per plan**

### Electrical Specifications

- **Ceiling Fan Pre-Wire in all Bedrooms, Den, Great Rooms and Patio**

**GHO HOMES** 772.257.1100 | ghohomes.com



Seller reserves the right to make changes or modifications to plans, maps, plan specifications, materials, features, and colors without notice. Prices are subject to change without notice. Maps, plans, landscaping and elevation renderings are artist's conceptions, are not to scale, and may not accurately depict the homes or lots as they are built. This brochure is for illustrative purposes only and not a part of a legal contract. Picture and floor plan shown above is likely not the actual home being offered, but a similar home/model.



# COMMUNITY FEATURES LIST

## Stoney Brook Farm

Created: Jan-17-2023

- Pre-Wire for Foyer Hanging Light
- Walk-In Closet Lighting - per plan
- Decorative Rocker Type Switches

### Energy Efficient & Safety Features

- ☑ **High Efficiency Air Conditioning System - Target 16 SEER Efficiency\*/ Straight Cool / Sized Per Home**
- HVAC AC Filter Access Located at AC Unit or in Adjacent Side-Wall for Easy Access - per plan
- Energy Efficient R4.1 Concrete Block Wall Insulation
- Energy Efficient R11 Garage to House Wall Insulation
- ☑ **Energy Efficient R-38 Minimum Attic Insulation over Conditioned Space**
- ☑ **Dual Pane Low E Coated Impact Glass on Windows / Sliding Glass Doors**
- Quick Recovery Electric Water Heater - 50 Gallon
- ARC Fault Electrical Outlets Per Code
- Smoke and Carbon Monoxide Detectors per code



GHO Homes sets a higher standard in appointing our homes. Our Ultimate Features - denoted by the check mark icon - set us apart from other builders and come standard in every GHO Home.

Additional Tailor Made home design options to choose from include built-in entertainment centers, wet bars, screened-in pools, and luxurious finishes and upgrades. From flooring to cabinetry and custom room designs, we've made it easy and affordable to realize your dreams. \*Overall system efficiency minimum 15 SEER, based on individual equipment available and sized per each home.

**GHO HOMES** 772.257.1100 | ghohomes.com



Seller reserves the right to make changes or modifications to plans, maps, plan specifications, materials, features, and colors without notice. Prices are subject to change without notice. Maps, plans, landscaping and elevation renderings are artist's conceptions, are not to scale, and may not accurately depict the homes or lots as they are built. This brochure is for illustrative purposes only and not a part of a legal contract. Picture and floor plan shown above is likely not the actual home being offered, but a similar home/model.