



COMMUNITY PRICE LIST

Created: Dec-22-2021

Venezia Estates

Venezia Lakefront Floorplans

Floorplan	Bed	Bath	Den	Garage	Sq.Ft.	Priced From
Capistrano Grande	3	3	Yes	3 Bay	2,361	TBD
Tacoma	3	3	Yes	2+ Bay	2,522	TBD

Pricing for Homesites 14 - 20 situated on the lake in Venezia Estates. Lot Premiums will apply to all lots. Contact your sales representative for lot premiums.

To Learn More About These Homes Please Contact

GHO HOMES 772.257.1100 | ghohomes.com



Seller reserves the right to make changes or modifications to plans, maps, plan specifications, materials, features, and colors without notice. Prices are subject to change without notice. Maps, plans, landscaping and elevation renderings are artist's conceptions, are not to scale, and may not accurately depict the homes or lots as they are built. This brochure is for illustrative purposes only and not a part of a legal contract. Picture and floor plan shown above is likely not the actual home being offered, but a similar home/model.

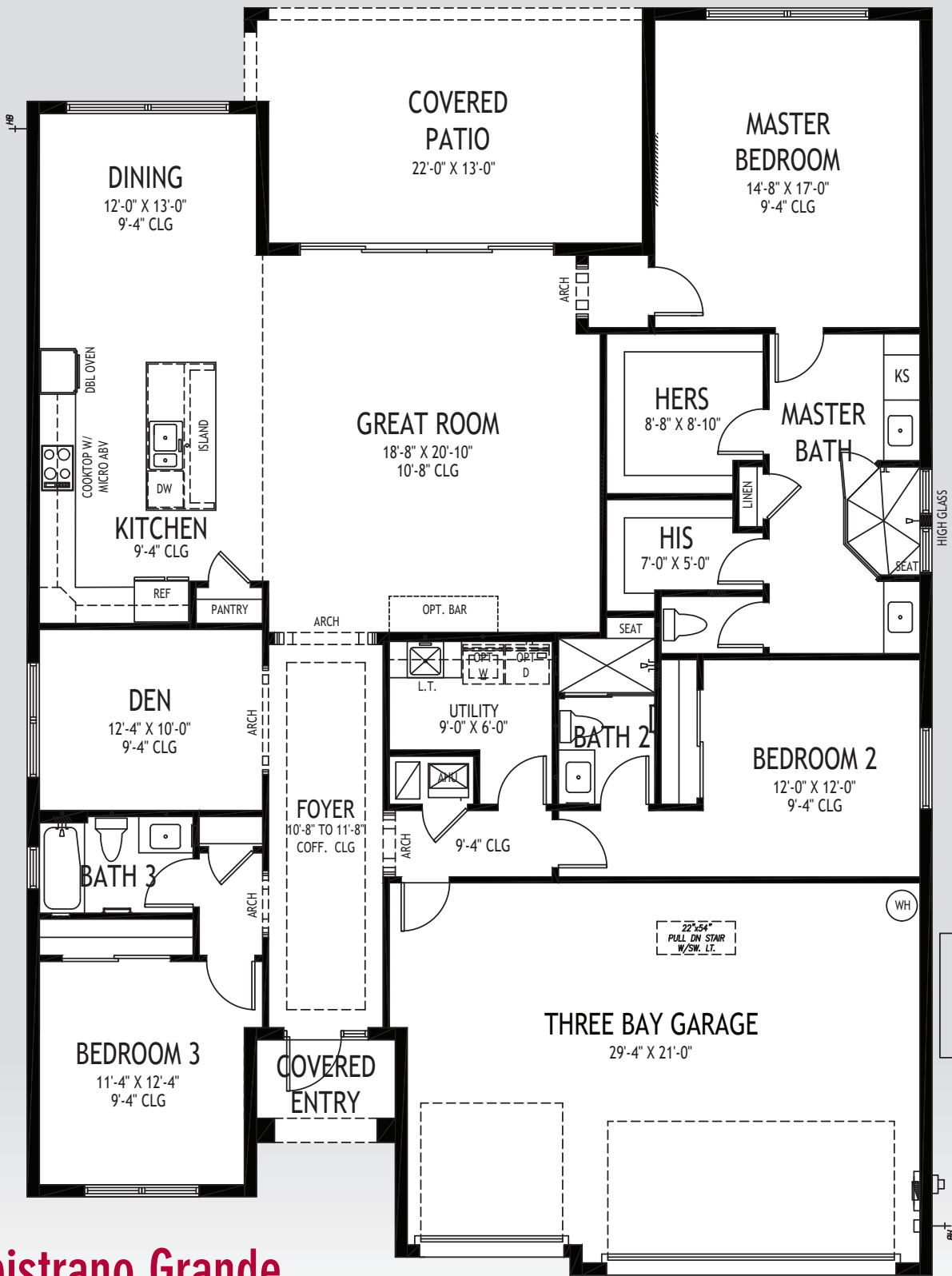
12TH STREET



The header features a decorative background with silhouettes of palm trees and a central lamp post on a stone pedestal. The text "VENEZIA ESTATES" is written in a large, bold, serif font across the bottom of the header.



All dimensions, features, specifications and square footages are approximate and subject to change without notice. Maps, plans, landscaping and elevation renderings are artist's conceptions, are not to scale, and may not accurately depict the homes or lots as they are built.



Capistrano Grande

50' W x 70' D

GHO HOMES

A GREEN BRICK PARTNER

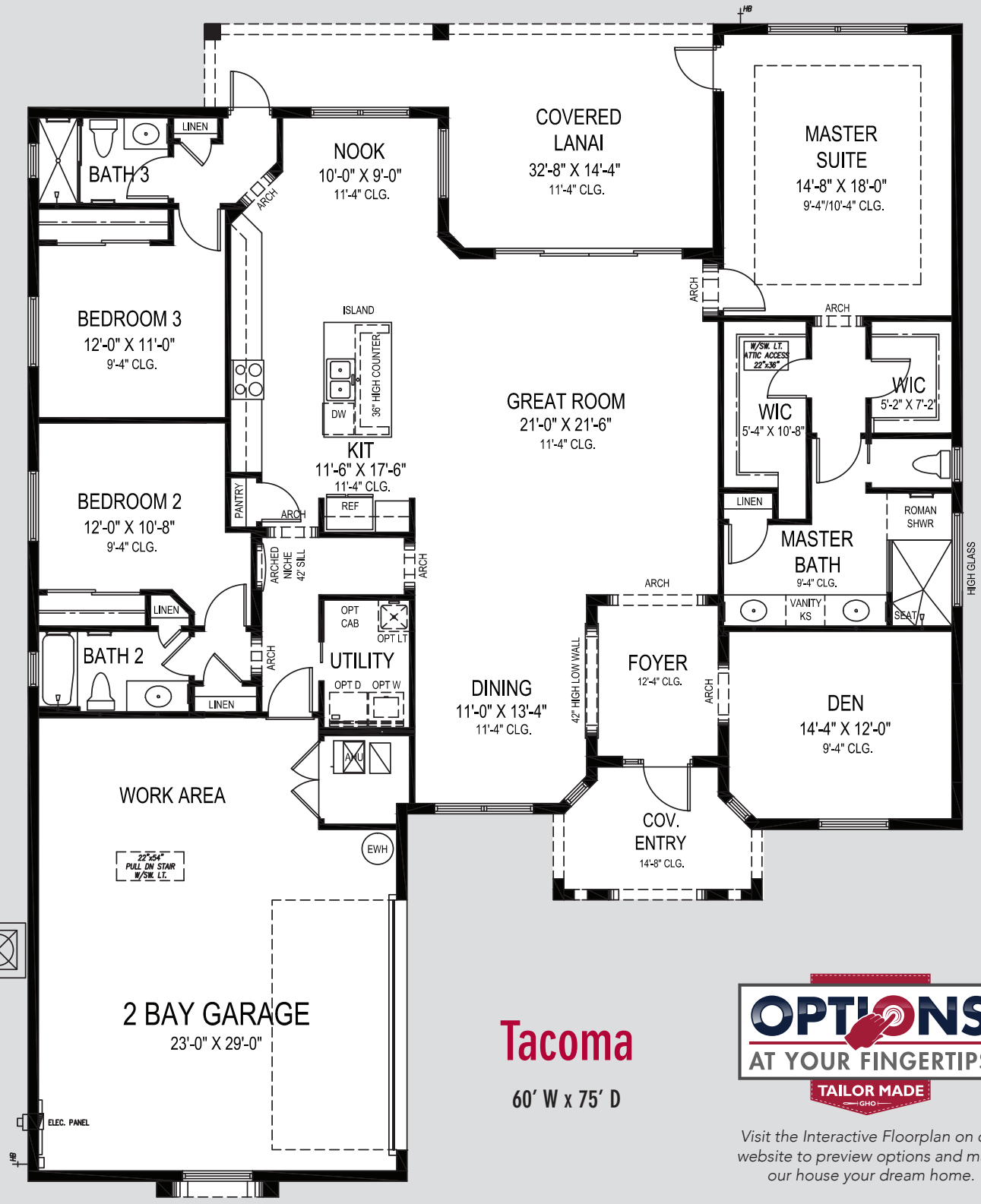
772.257.1100 • GHOHOMES.COM

APPROXIMATE AREAS

Air Conditioned2,361 Sq. Ft.
 Covered Entry43 Sq. Ft.
 Covered Lanai276 Sq. Ft.
 3 Bay Garage636 Sq. Ft.
TOTAL3,316 Sq. Ft.



All dimensions, features, specifications and square footages are approximate and subject to change without notice. Maps, plans, landscaping and elevation renderings are artist's conceptions, are not to scale, and may not accurately depict the homes or lots as they are built. © GHO Homes 2018. Revised August 9, 2019.



Tacoma
60' W x 75' D



Visit the Interactive Floorplan on our website to preview options and make our house your dream home.

GHO HOMES
772.257.1100 | ghohomes.com

APPROXIMATE AREAS	
Air Conditioned	2,522 Sq. Ft.
Covered Entry	98 Sq. Ft.
Covered Patio	326 Sq. Ft.
2 Bay Garage	689 Sq. Ft.
TOTAL	3,635 Sq. Ft.



All dimensions, features, specifications and square footages are approximate and subject to change without notice. Maps, plans, landscaping and elevation renderings are artist's conceptions, are not to scale, and may not accurately depict the homes or lots as they are built.



COMMUNITY FEATURES LIST

Venezia Estates

Created: Dec-22-2021

"GHO Connectivity" Technology/Convenience Features

- ☑ **GHO Smart Panel with 1 CAT6 data line & 4 RG6 cable TV locations, per plan, prewired for AT&T or Comcast**
- ☑ **Wall Mounted TV Package installed at 60 inches above floor in Master Suite and Great Room, includes Wall Backing w/wire pull chase rings, cable and power outlet at 60 inches above floor and below at standard wall height (locations included in Smart Panel description above)**
- ☑ **Automatic Garage Door Opener**
- ☑ **NEST Next Generation Learning Thermostat**
- ☑ **Nest Hello Video Door Bell - Wifi Ready**
- ☑ **Schlage Smart Deadbolt - Entry Door**
- ☑ **Rain Bird WaterSense Irrigation Controller - Wifi Ready**

Construction Features

- **Structural Design Per Florida Current Building Codes and Design Standards**
- ☑ **Double Row Steel & Concrete Bond Beam**
- ☑ **Plywood 5/8" (19/32) Roof Sheathing (no particle board)**
- Concrete Slab on Grade with Steel Reinforcement and Fibermesh Concrete
- **Sentricon Termite Treatment and Control System - 1 year service included**
- **Concrete Block Construction with Concrete and Steel Reinforcement**
- **Professionally Engineered Roof Trusses with Hurricane Straps**
- Concrete Based Textured Exterior Wall Finish
- Underground County/City Electrical, Water and Sewer Connections

Exterior Features

- **Concrete Tile Roof System, Choice of Flat or Roll Style and Select Colors**
- ☑ **Impact Glass - All Windows, Sliders and Glass Doors - all openings**
- **Sherwin Williams Acrylic Exterior Paint on Exterior Walls of Home**
- **Wind Rated Garage Doors**
- **Paver Driveway, Front Walks and Rear Covered Patio Floor**
- ☑ **Fiberglass Raised-Panel 8' Front Doors with Clear Impact Glass Single Lite Sidelites - per plan**
- **Professionally Designed Landscaped Package and Floratam Sod**
- **Automatic Underground Irrigation System, Irrigation Water supplied by Individual Well and Pump**

GHO HOMES 772.257.1100 | ghohomes.com



Seller reserves the right to make changes or modifications to plans, maps, plan specifications, materials, features, and colors without notice. Prices are subject to change without notice. Maps, plans, landscaping and elevation renderings are artist's conceptions, are not to scale, and may not accurately depict the homes or lots as they are built. This brochure is for illustrative purposes only and not a part of a legal contract. Picture and floor plan shown above is likely not the actual home being offered, but a similar home/model.



COMMUNITY FEATURES LIST

Venezia Estates

Created: Dec-22-2021

- Exterior GFI Electric Outlets (2)
- Exterior Garden Hose Connections (2)

Utility Room and Garage

- ☑ **Upper & Lower Laundry/Utility Room Cabinets (GHO Level 1) w/ Drop in Laundry Tub**
- ☑ **Granite/Quartz Counter Top on Base Cabinets in Utility Room**
 - **Drop Down Stairs to Attic Area**
- ☑ **LED Lighting Provided for Garage and Utility Room**
- ☑ **Garage Floor Concrete Finished Covering - Epoxy with Color Flake**
 - Recessed Dryer Vent Box

Gourmet Kitchens

- ☑ **Kitchen Cabinets w/ Wood Dove Tail Drawers & Soft-close Drawers. Dove Tail & Soft Close Not Standard in Painted Cabinet Options - (GHO Level 2 Selections)**
- ☑ **Kitchen Cabinets feature Crown Molding, Glass Doors, Light Valance and Upgraded Layout - per plan**
- ☑ **Granite or Quartz Kitchen Counter Top, with 4 inch back splash, layout per plan (GHO Level 1 Selections)**
 - Kitchen Faucet: Pull Out Spray - Stainless Steel Finish
 - **Stainless Steel Undermount Kitchen Sink 70/30 Split**
- ☑ **Whirlpool Stainless Steel Finish Appliance Package**
- ☑ **Whirlpool Refrigerator LED tap touch controls, In Door Ice**
- ☑ **Whirlpool Over the Range Microwave**
- ☑ **Whirlpool Smart Double Wall Oven**
- ☑ **Whirlpool 30 inch Electric Glass Cooktop**
- ☑ **Whirlpool Dishwasher**
 - Flooring: Ceramic Tile in Kitchen and Breakfast Rooms per plan
- ☑ **Natural finish wood open shelving in Pantry**

Luxury Bathrooms

- ☑ **Raised Height Bath Vanity Cabinets, Choice of Colors (GHO Level 2 Selections)**
- ☑ **Granite or Quartz Bath Vanity Top (GHO Level 1 Selections) with Rectangular White Under-Mount Sink - all baths**
- ☑ **Oversized Walk-In Roman Showers - per plan**
- ☑ **Built in Shower Seat in Master Shower, Ceramic Tile - per plan**
 - **Built in Shower Soap Niche in all Showers, per plan**

GHO HOMES 772.257.1100 | ghohomes.com



Seller reserves the right to make changes or modifications to plans, maps, plan specifications, materials, features, and colors without notice. Prices are subject to change without notice. Maps, plans, landscaping and elevation renderings are artist's conceptions, are not to scale, and may not accurately depict the homes or lots as they are built. This brochure is for illustrative purposes only and not a part of a legal contract. Picture and floor plan shown above is likely not the actual home being offered, but a similar home/model.



COMMUNITY FEATURES LIST

Venezia Estates

Created: Dec-22-2021

- Clear Glass Shower Enclosures or Glass Panels - per plan
- ☑ Drop in Acrylic Master Bath Roman Tub with Tile Tub Deck Top
- Enamel Steel Tub/Shower combo in Secondary Bathroom(s)
- ☑ Ceramic Tile Bathroom Floors with Walls and Shower Floors - Choice of Deco Wall Tile Packages with Listello
- Features all Baths (GHO Level 1 Selections)
- ☑ Bathroom Faucets and Fixtures (Brushed Finish)
- ☑ Raised, Comfort Height White Toilets - all Bathrooms
- Full Width Oversized Height Vanity Mirrors
- Clear Glass Windows in all Baths with Frosted Windows Option- per plan

Interior Appointments

- ☑ 8 Ft. Two-Panel Interior Doors with Roman Arched or Square Top, Oversized Door Casing and Baseboard
- ☑ Crown Molding in Foyer, Great Room/Family Room, Kitchen, Living Room, Dining Room and Master Bedroom - perimeter of room only/ layout per plan
- ☑ Built-In Bar Base Cabinets with Granite or Quartz Counter Top, on select plans (Match Kitchen - per plan)
 - Solid Surface White Window Sills Throughout Living Area
- ☑ Ceramic Tile Flooring in Foyer, Kitchen, Halls, Great Room or Family Room & Living Room, Dining Room and Utility Room - layouts per plan (GHO Level 1 Selections)
 - Designer Flooring Collection - Choice of Select Oversized Ceramic Floor Tile
 - Wall-to-Wall Carpet in Choice of Designer Colors in all Bedrooms and Den (GHO Level 1 Selections)

Interior Design Features

- ☑ Rounded Interior Wall Corners, Excluding Windows, Doors, Sliding Glass Doors, Bathrooms, Garages, Ceilings and Closets - per plan
 - Flat Volume Ceilings - Minimum over 9feet High (per plan)
 - Designer Knockdown Texture on Ceilings
 - Air-Conditioned Walk-In Closets - per plan
- ☑ Designer Two Tone Interior Paint Upgrade - Choice of Select Colors (select one) and White for Trim, Ceiling & Garage
- ☑ Natural finish wood open shelving in all closets, per plan

Electrical Specifications

- ☑ Recessed LED HiHat Lighting in Kitchen, Halls, Bathrooms, Covered Entry and Patio - Per Plan

GHO HOMES 772.257.1100 | ghohomes.com



Seller reserves the right to make changes or modifications to plans, maps, plan specifications, materials, features, and colors without notice. Prices are subject to change without notice. Maps, plans, landscaping and elevation renderings are artist's conceptions, are not to scale, and may not accurately depict the homes or lots as they are built. This brochure is for illustrative purposes only and not a part of a legal contract. Picture and floor plan shown above is likely not the actual home being offered, but a similar home/model.



COMMUNITY FEATURES LIST

Venezia Estates

Created: Dec-22-2021

- Ceiling Fan Pre-Wire in all Bedrooms, Den and Great Rooms and Patio
- Pre-Wire for Foyer Hanging Light
- Walk-In Closet Lighting - per plan
- Decorative Rocker Type Switches

Energy Efficient & Safety Features

- ☑ **High Efficiency Air Conditioning System - 16 SEER / Straight Cool / Sized Per Home**
 - HVAC AC Filter Access Located at AC Unit or in Adjacent Side-Wall for Easy Access - per plan
 - Energy Efficient R4.1 Concrete Block Wall Insulation
 - Energy Efficient R11 Garage to House Wall Insulation
- ☑ **Energy Efficient R-40 Attic Insulation over Conditioned Space**
- ☑ **Dual Pane Low E Coated Impact Glass on Windows / Sliding Glass Doors**
 - Quick Recovery Electric Water Heater - 50 Gallon
 - ARC Fault Electrical Outlets Per Code
 - Smoke and Carbon Monoxide Detectors per code



GHO Homes sets a higher standard in appointing our homes. The features that set us apart from other builders are our Ultimate Features - denoted by the check mark icon - which come standard in each of our homes.

Additional Tailor Made home design options to choose from include built-in entertainment centers, wet bars, screened-in pools and luxurious finishes and upgrades. From flooring to cabinetry and custom room designs, we've made it easy and affordable to realize your dreams.

GHO HOMES 772.257.1100 | ghohomes.com



Seller reserves the right to make changes or modifications to plans, maps, plan specifications, materials, features, and colors without notice. Prices are subject to change without notice. Maps, plans, landscaping and elevation renderings are artist's conceptions, are not to scale, and may not accurately depict the homes or lots as they are built. This brochure is for illustrative purposes only and not a part of a legal contract. Picture and floor plan shown above is likely not the actual home being offered, but a similar home/model.